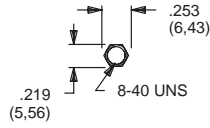


HEX NUTS

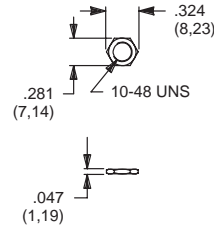
8-40 THREAD



PART NO.
775200201 NICKEL PLATED
775200264 BLACK

FOR SERIES
 8600

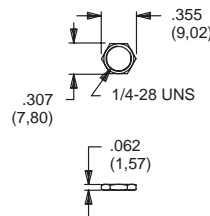
10-48 THREAD



PART NO.
464900201 NICKEL PLATED
464900264 BLACK

FOR SERIES
 T, TP

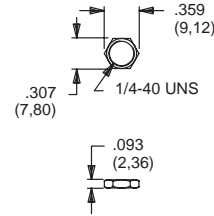
1/4-28 THREAD



PART NO.
477100201 NICKEL PLATED

FOR SERIES
 M

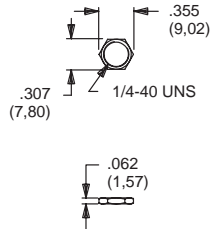
1/4-40 THREAD



PART NO.
540400201 NICKEL PLATED
540400264 BLACK

FOR SERIES
 E, E010

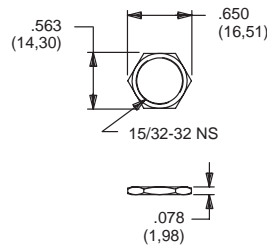
1/4-40 THREAD



PART NO.
700201201 NICKEL PLATED
700201264 BLACK

FOR SERIES
 7000, 8020, 8060, 8500, 9000, T, TP

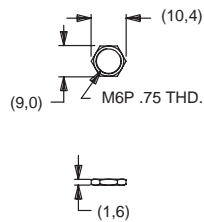
15/32 THREAD



PART NO.
707100201 NICKEL PLATED
707100215 SATIN CHROME
707100264 BLACK

FOR SERIES
 7000, 8500, 9000

METRIC



PART NO.
791600201 NICKEL PLATED
791600264 BLACK

FOR SERIES
 7000, 8020, 8060

MATERIAL

Brass, nickel plated standard. Other finishes available, consult factory.

DRESS NUTS

<p>10-48 THREAD</p> <p>PART NO. 465701201 NICKEL PLATED 465701264 BLACK</p> <p>FOR SERIES T, TP</p>	<p>1/4 - 40 THREAD</p> <p>PART NO. 580700201 NICKEL PLATED</p> <p>FOR SERIES 8020, 8060, 8500, TP</p>
<p>1/4 - 40 THREAD</p> <p>PART NO. 702501201 NICKEL PLATED 702501264 BLACK</p> <p>FOR SERIES 8020, 8060, E010, TP</p>	<p>1/4 - 40 THREAD, BLIND</p> <p>PART NO. 709901201 NICKEL PLATED 709901215 SATIN CHROME 709901264 BLACK</p> <p>FOR SERIES 7000, 8020, 8060, 8500, 9000, E, E010, T, TP</p>
<p>1/4 - 40 THREAD</p> <p>PART NO. 776001201 NICKEL PLATED 776002231 BLACK</p> <p>FOR SERIES 7000, 8020, 8060, 8500, 9000, E, E010, T, TP</p>	<p>1/4 - 40 THREAD</p> <p>PART NO. 780701201 NICKEL PLATED 780701215 SATIN CHROME 780701264 BLACK</p> <p>FOR SERIES 7000, 8020, 8060, 8500, 9000, E, E010, T, TP</p>
<p>15/32 THREAD, BLIND</p> <p>PART NO. 498800201 NICKEL PLATED</p> <p>FOR SERIES 8500</p>	<p>15/32 THREAD, BLIND</p> <p>PART NO. 605300201 NICKEL PLATED</p> <p>FOR SERIES 7000 (T2P Actuator option only)</p>
<p>15/32 THREAD</p> <p>PART NO. 895101201 NICKEL PLATED 895101264 BLACK</p> <p>FOR SERIES 7000, 8500, 9000</p>	<p>METRIC</p> <p>PART NO. 709903201 NICKEL PLATED 709903264 BLACK</p> <p>FOR SERIES 7000, 8020, 8060</p>

MATERIAL

Brass, nickel plated standard. Other finishes available, consult factory.

KNURLED NUTS

<p>1/4 - 40 THREAD, BLIND</p> <p>1/4-40 UNS</p> <p>Controlled Knurl</p> <p>PART NO. 778000201 NICKEL PLATED 778000264 BLACK</p> <p>FOR SERIES 7000, 8020, 8060, 8500, 9000, T, TP</p>	<p>1/4 - 40 THREAD</p> <p>1/4-40 UNS</p> <p>Controlled Knurl</p> <p>PART NO. 778600201 NICKEL PLATED 778600224 BLACK</p> <p>FOR SERIES 7000, 8020, 8060, 8500, 9000, E, E010, T, TP</p>
<p>1/4 - 40 THREAD (FITS GULMITE #12 SOCKET)</p> <p>1/4-40 UNS</p> <p>Controlled Knurl</p> <p>PART NO. 796901201 NICKEL PLATED 796901264 BLACK</p> <p>FOR SERIES 7000, 8020, 8060, 8500, 9000, T, TP</p>	<p>15/32 THREAD, BLIND</p> <p>15/32-32 NS BLIND THD.</p> <p>Controlled Knurl</p> <p>PART NO. 471300201 NICKEL PLATED 471300264 BLACK</p> <p>FOR SERIES 7000, 8500, 9000</p>
<p>METRIC</p> <p>M6P .75 THD.</p> <p>Controlled Knurl</p> <p>PART NO. 483200201 NICKEL PLATED</p> <p>FOR SERIES 7000, 8020, 8060</p>	

MATERIAL

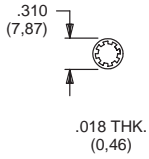
Brass, nickel plated standard. Other finishes available, consult factory.

WRENCHES

<p>PART NO. 465300201</p> <p>FITS NUT PART NUMBERS 4649XXXXX, 4657XXXXX</p>	<p>PART NO. 778500201</p> <p>FITS NUT PART NUMBERS 7002XXXXX, 7099XXXXX 7807XXXXX, 7916XXXXX</p>
<p>PART NO. 481500201</p> <p>FITS NUT PART NUMBERS 7780XXXXX, 4832XXXXX</p>	<p>PART NO. 894200201</p> <p>FITS NUT PART NUMBERS 7969XXXXX</p>

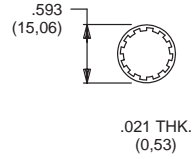
LOCKWASHERS

FITS 10-48 BUSHING



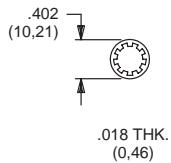
PART NO.
465200202 NICKEL PLATED

FITS 15/32 BUSHING



PART NO.
700302202 NICKEL PLATED
700302264 BLACK

FITS 1/4 - 40 BUSHING



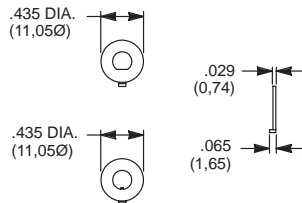
PART NO.
700303202 NICKEL PLATED
700303264 BLACK

MATERIAL

Steel, nickel plated standard. Other finishes available, consult factory.

LOCKING RINGS

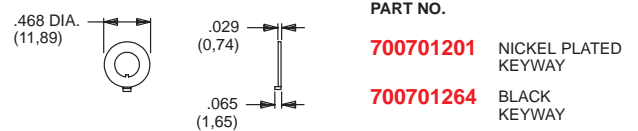
FITS 10-48 BUSHING



PART NO.
465000201 NICKEL PLATED
FLAT

PART NO.
465101201 NICKEL PLATED
KEYWAY

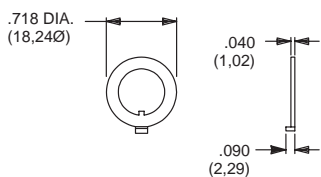
FITS 1/4 - 40 BUSHING



PART NO.
700701201 NICKEL PLATED
KEYWAY

700701264 BLACK
KEYWAY

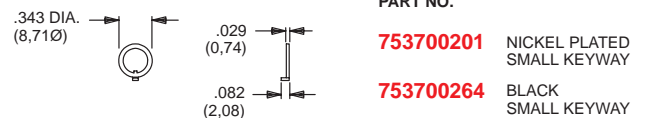
FITS 15/32 BUSHING



PART NO.
707200201 NICKEL PLATED
KEYWAY

707200264 BLACK
KEYWAY

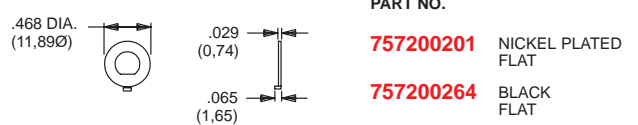
FITS 1/4 - 40 BUSHING



PART NO.
753700201 NICKEL PLATED
SMALL KEYWAY

753700264 BLACK
SMALL KEYWAY

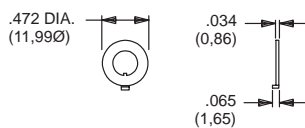
FITS 1/4 - 40 BUSHING



PART NO.
757200201 NICKEL PLATED
FLAT

757200264 BLACK
FLAT

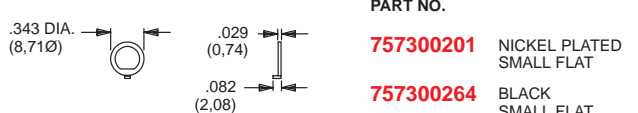
FITS METRIC BUSHING



PART NO.
791800201 NICKEL PLATED
KEYWAY

791800264 BLACK
KEYWAY

FITS 1/4 - 40 BUSHING



PART NO.
757300201 NICKEL PLATED
SMALL FLAT

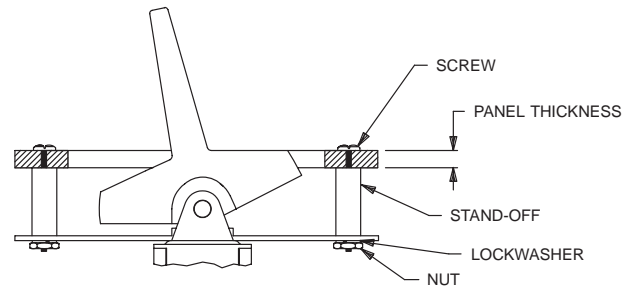
757300264 BLACK
SMALL FLAT

MATERIAL

Brass, nickel plated standard. Other finishes available, consult factory.

ROCKER AND LEVER HANDLE SWITCH-PANEL MOUNTING HARDWARE

Panel mounting hardware for rocker and lever handle switches is available separately. Mounting hardware consists of two screws, two nuts, two standoffs and two lockwashers per switch, and is available for panel thicknesses of 1/16, 3/32 and 1/8 inch. See part numbers below.



For J1, J2, J54, J64, J94 actuators; 7000 & E series.
For J1, J6 actuators; T series.

PART NO.	PANEL THK.	STANDOFF LENGTH
761101000	1/16 IN. (1,59)	.295 (7,49)
761102000	3/32 IN (2,38)	.264 (6,71)
761103000	1/8 IN. (3,18)	.233 (5,92)

For J1, J2, J3, J50, J60, J90 actuators; 9000 series.
For J3 actuators, 7000 series.

PART NO.	PANEL THK.	STANDOFF LENGTH
770601000	1/16 IN. (1,59)	.295 (7,49)
770602000	3/32 IN (2,38)	.264 (6,71)
770603000	1/8 IN. (3,18)	.233 (5,92)

For J4, J5 actuators; 7000, 9000 series.

PART NO.	PANEL THK.	STANDOFF LENGTH
775001000	1/16 IN. (1,59)	.375 (9,53)
775002000	3/32 IN (2,38)	.344 (8,74)
775003000	1/8 IN. (3,18)	.312 (7,92)

For J10 actuators; 7000, 9000 series.

PART NO.	PANEL THK.	STANDOFF LENGTH
770701000	1/16 IN. (1,59)	.295 (7,49)
770702000	3/32 IN (2,38)	.264 (6,71)
770703000	1/8 IN. (3,18)	.233 (5,92)

MATERIAL

Screws, nuts, lockwashers: Stainless steel. Standoffs: Nylon, standard Aluminum available, consult factory.

ROCKER AND LEVER HANDLE ACTUATORS

J1



PART NO.

538501000 WHITE
538502263 BLACK
538503000 RED

FOR SERIES

ET

J1



PART NO.

468001000 WHITE
468002263 BLACK
468003000 RED

FOR SERIES

T

MATERIAL

Nylon. Finish: Matte. Special colors, custom markings available, consult factory.