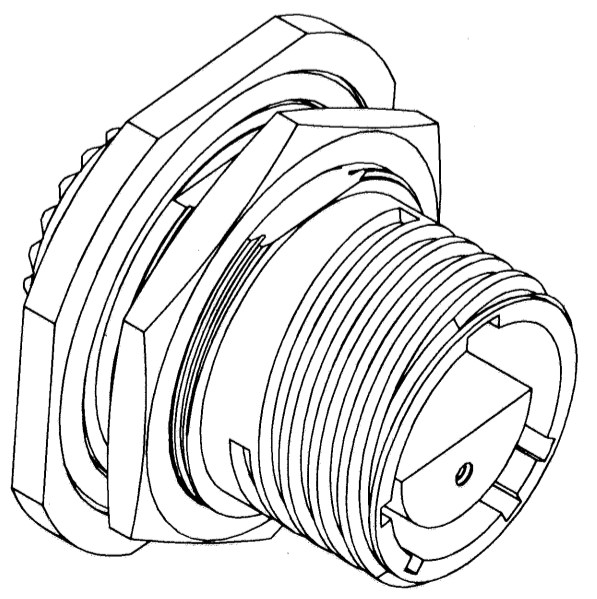
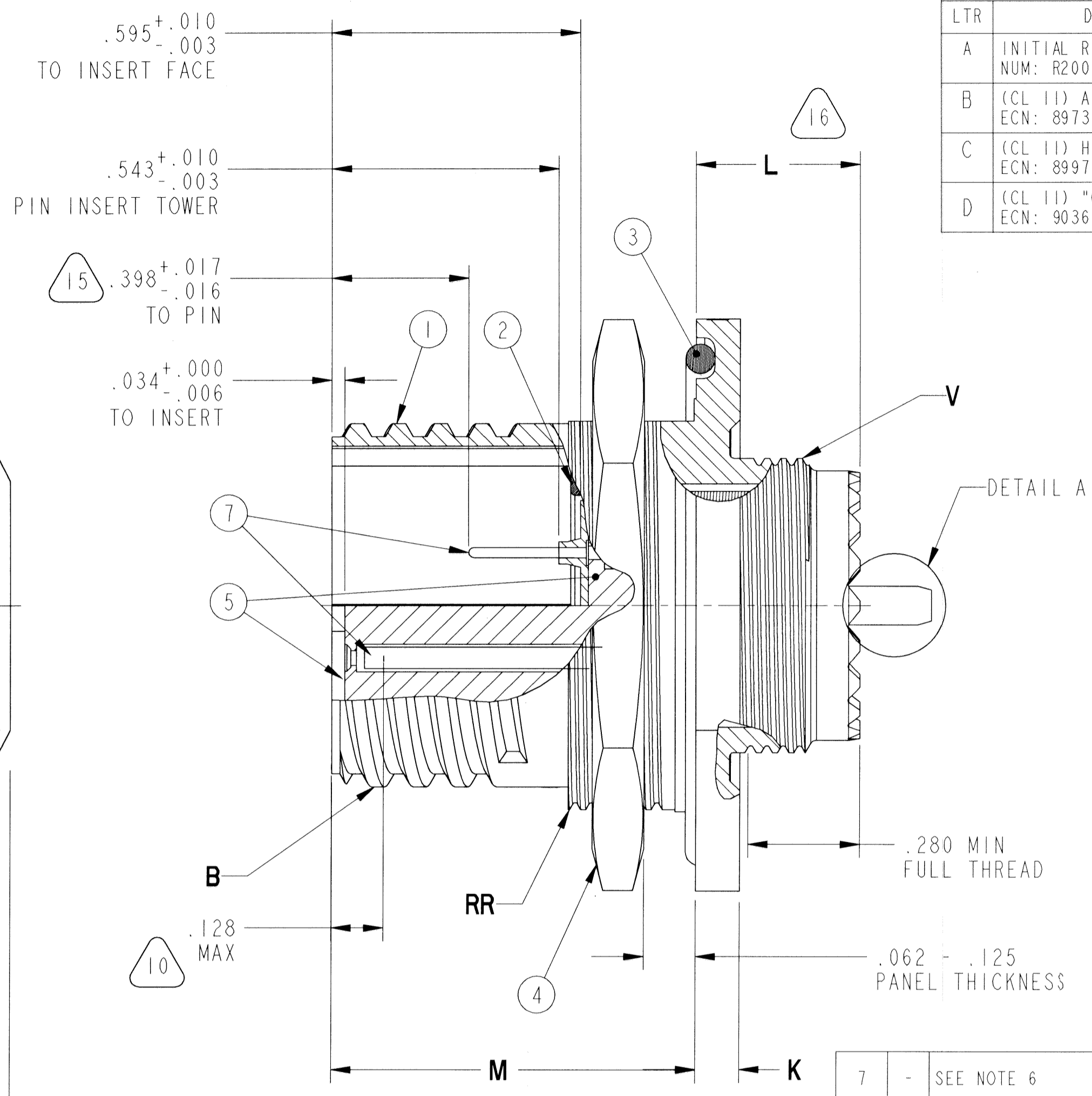
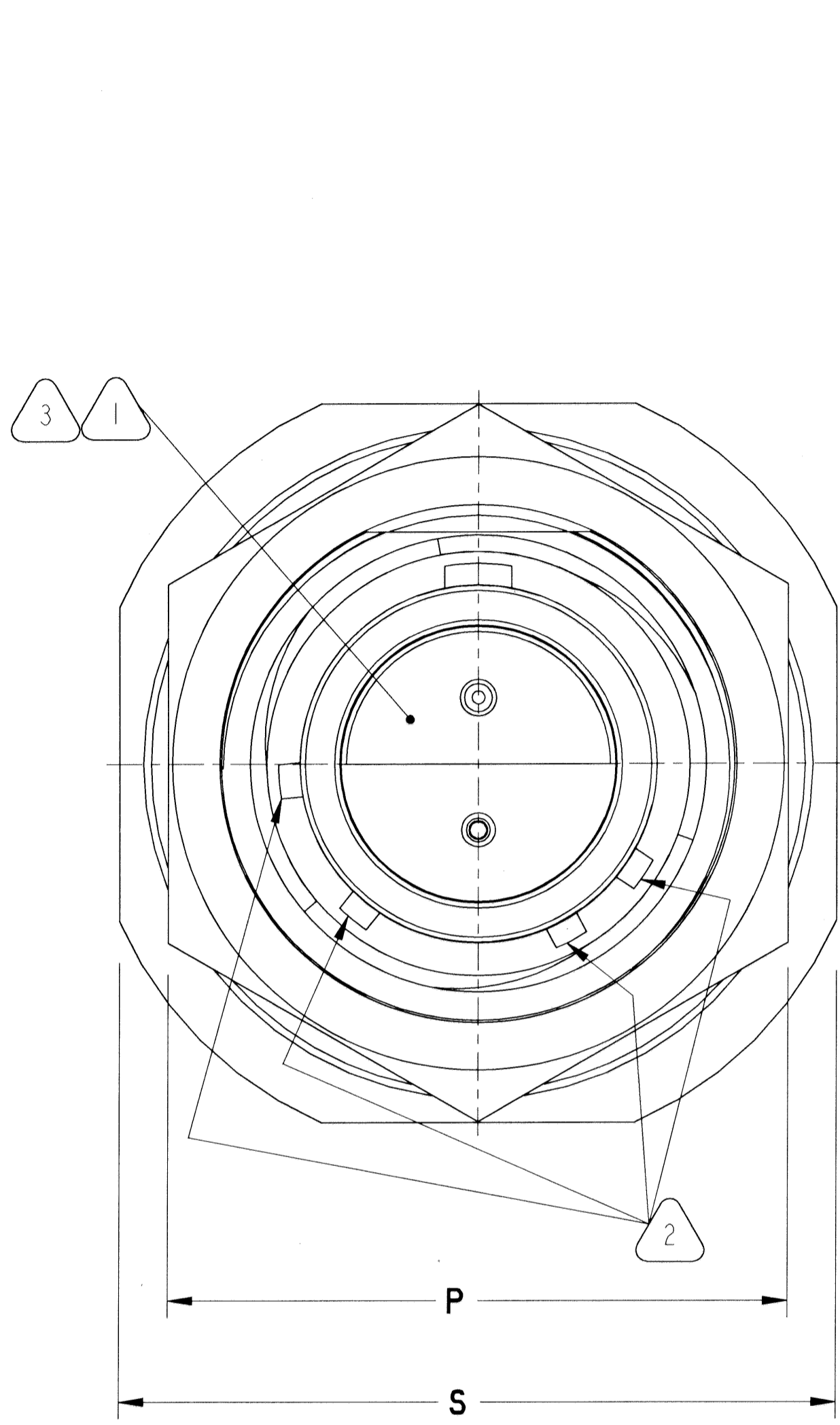


REVISIONS			
LTR	DESCRIPTION	DATE	APPVD
A	INITIAL RELEASE NUM: R2001-155		
B	(CL II) ADD ALT PACKING ECN: 89733	6/6/01 BADOLATO	
C	(CL II) HEX NUT MODIFIED ECN: 89976	8/6/01 SANDBURG	
D	(CL II) "CTVS" TO "AL" ECN: 90364	10/17/01 SANDBURG	



7	-	SEE NOTE 6	CONTACT, PIN	6
			CONTACT, SOCKET	6
6	-	10-452952	INSULATOR ASSY	6
5	I	10-538170/179-()P	INSERT, PIN	3,6
5	I	10-552440/449-()P	INSERT, PIN	3,6
5	I	10-417307/359-()S OR	INSERT, SOCKET	3,6
5	I	10-555407/429-()S	INSERT, SOCKET	3,6
4	I	10-554224-()6	HEX NUT	6
3	I	SEE PARTS LIST	PACKING	13,6
2	I	10-527257-()	GASKET	6
1	I	10-629062/067-()T	SHELL	6

UNLESS OTHERWISE SPECIFIED	SPECIFICATIONS	POS	QTY	PART NUMBER	DESCRIPTION	NOTE
LINEAR DIMENSIONS ARE IN INCHES TOLERANCES: .XXXX = ±.0005 .XXX = ±.010 .XX = ±.03 .X = ±.1 ANGLES = ±2° OTHER STANDARDS PER 9-3800 AND DOD-D-1000	MATERIAL SPEC. N/A					
PROCESS SPEC. SEE NOTE 8						
THIRD ANGLE PROJECTION						

PARTS LIST			
AMPHENOL CORPORATION			
<small>AMPHENOL AEROSPACE OPERATIONS SIDNEY, N.Y. 13838</small>			
CONNECTOR, ELECTRICAL RECEPTACLE, U TYPE: AL07F() ELECTROLESS NICKEL COATED			
APPROVALS PREPARED: H JOHNSON CHECKED-ENG: C J WESTRIC APPROVED-MATERIAL LAB: H JOHNSON APPROVED-PROCESS: D O GALLUSSER APPROVED-ENG-1W-CHG: H JOHNSON APPROVED-QUALITY: N/A JOHNSON APPROVED-ENG-MGR: D O GALLUSSER	DATE 19-Apr-01 5/10/01 5/10/01 5/10/01 5/10/01 5/10/01 5/10/01	SIZE C	FSCM NO. 77820
DOCUMENT NO. 91-629160/169		REV. D	SCALE: NONE REF: 91-577380/389 SHEET 1 OF 2

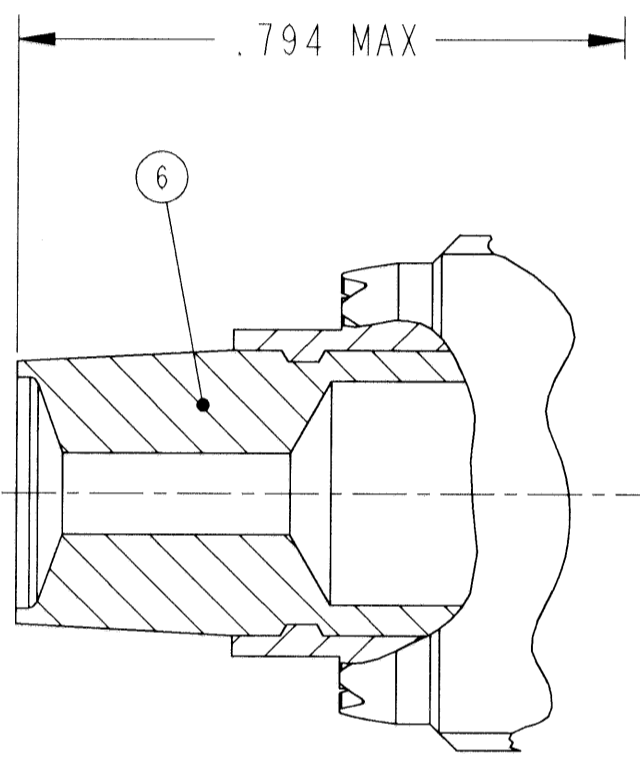
NOTES:
 WARNING: IF THIS BOX IS CHECKED, THIS DRAWING HAS BEEN MODIFIED BY HAND-DRAFTING WITHOUT COMPUTER UPDATING

THE USE OF THIS DOCUMENT IS UNLIMITED. HOWEVER, DOCUMENTS REFERENCED HEREON MAY CONTAIN LIMITED RIGHTS DATA.

N/A	PRO/ENGINEER INFORMATION
N/A	Pro/e Model Used: CTV07RF.ASSEM
NEXT ASSEMBLY	Drawing Name: 91-629160_169-REV D

DOCUMENT NO. 91-629160/169
 SHEET 1 OF 2
 REV. D
 SHEET 1 OF 2
 91-629160/169
 SHEET 1 OF 2
 91-629160/169
 SHEET 1 OF 2
 91-629160/169

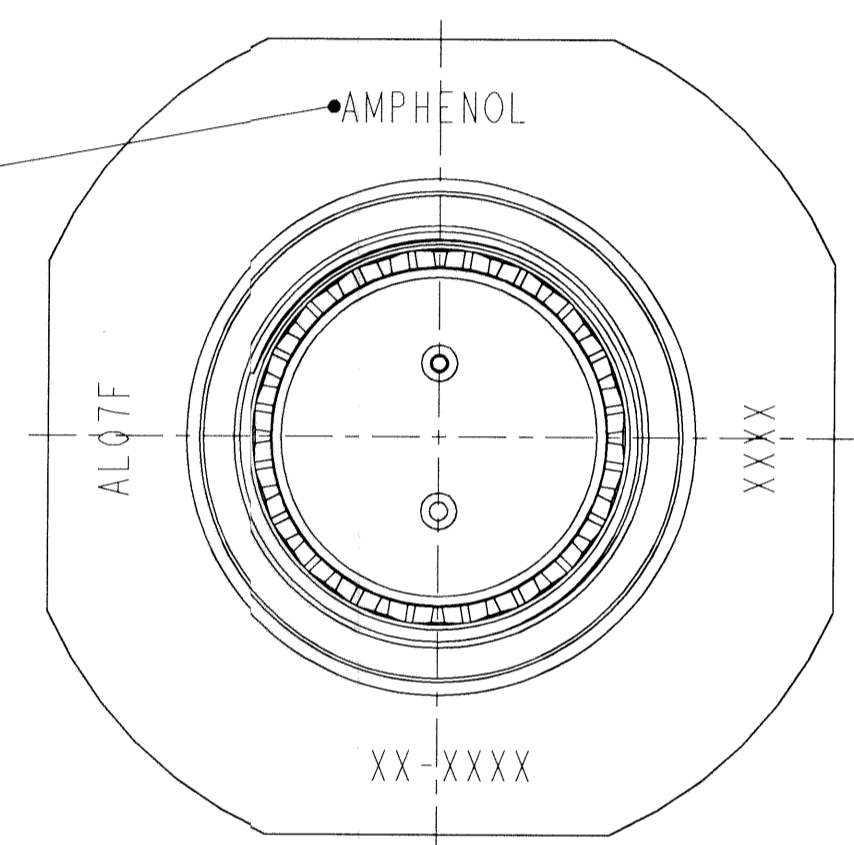
ASSEMBLY NUMBER	AL NUMBER	B THREAD CLASS 2A (PLATED) PER 9-3200-2	K +.010 -.005	L MAX	M	P HEX +.017 -.016	S +.011 -.010 SQUARE	V THREAD (PLATED) 9-7543	RR THREAD (PLATED) 9-7543	SIZE
										NOT AVAILABLE
91-629160-()	AL07F7-()									
91-629161-()	AL07F9-()	.6250-0.1P-0.3L-TS	.104							.414 .871 .875 1.062 M12X1-6g0.100R M17X1-6g0.100R
91-629162-()	AL07F11-()	.7500								.414 .871 1.000 1.250 M15 M20
91-629163-()	AL07F13-()	.8750								1.188 1.375 M18 M25
91-629164-()	AL07F15-()	1.0000								1.312 1.500 M22 M28
91-629165-()	AL07F17-()	1.1875	.135							1.438 1.625 M25 M32
91-629166-()	AL07F19-()	1.2500								.407 .878 1.562 1.812 M28 M35
91-629167-()	AL07F21-()	1.3750								1.688 1.938 M31 M38
91-629168-()	AL07F23-()	1.5000								1.812 2.062 M34 M41
91-629169-()	AL07F25-()	1.6250								2.000 2.188 M37 M44



DETAIL A ENLARGED FOR SIZE 8 COAXIAL CONTACT ONLY



STAMP "AMPHENOL" AL NO. & DATE CODE (9-3895) PER 9-5788
 EXAMPLE:
 AMPHENOL AL07F11-35P 0116 FOR ROTATED KEYWAYS
 EXAMPLE:
 AMPHENOL AL07F11-98SA 0116



VIEW AT A

7. PACKAGE PER PRODUCTION PROCESS SHEET.
6. SEE SEPARATE PARTS LIST FOR COMPONENT PART NUMBERS AND QUANTITIES.
5. DRAWING ILLUSTRATES FINAL ASSEMBLY. SEE PRODUCTION PROCESS SHEET/SHIPPER FOR SPECIAL PACKING REQUIREMENTS (THERE ARE SPECIAL PACKAGING REQUIREMENTS).
4. FOR FINAL INSTALLATION, CONTACTS MUST BE ASSEMBLED INTO ALL INSERT HOLES. ALL UNUSED GROMMET HOLES MUST BE FILLED WITH THE APPROPRIATE SIZE SEALING PLUGS.
3. INSERT ASSEMBLY IS NOT REMOVABLE.
2. ALTERNATE ROTATIONS ARE OBTAINED BY ROTATING INDICATED KEYWAYS. SIX POSITIONS ARE AVAILABLE. SEE 9-2437-25.
1. FOR CONTACT ARRANGEMENT PATTERN, SEE DRAWINGS L-15206-() THRU L-15225-(). ALTERNATE POSITIONS THEREON DO NOT APPLY.

11. UNITS ILLUSTRATED MEET THE APPLICABLE REQUIREMENTS OF MIL-C-38999.
10. DISTANCE FROM END OF SHELL TO THE POINT AT WHICH A GAGE PIN HAVING THE SAME BASIC DIAMETER AS THE MATING CONTACT AND A SQUARE FACE ENGAGES ELECTRICAL SOCKET CONTACT SPRING.
9. FOR MATING CONNECTOR, SEE 91-629150/159.
8. PROCESS SPEC:
 TEST 9-5044
 ASSY 9-5047-11
 PROCESS 9-2437-25, 9-5788, 9-7543, 9-3200-2, 9-3895

16. FOR 25-20 ARRANGEMENT, INDICATED DIMENSION IS .423 MAX.
15. INDICATED DIMENSION IS .175±.025 FOR SIZE 8 COAXIAL CONTACTS.
14. TO COMPLETE NUMBERS, ADD APPLICABLE INSERT ARRANGEMENT (PATTERN) SUFFIX PER 9-2437-25.
13. FOR MAXIMUM SEALING EFFICIENCY, APPLY A LIGHT COAT OF COMPOUND MIL-S-8660 TO INDICATED PACKING.
12. SEE WORK ORDER FOR PERMISSIBLE ADDITIONAL OR ALTERNATE STAMPING.

NOTES:

THE USE OF THIS DOCUMENT IS UNLIMITED. HOWEVER, DOCUMENTS REFERENCED HEREON MAY CONTAIN LIMITED RIGHTS DATA.

SIZE C	FSCM NO. 77820	DOCUMENT NO. 91-629160/169	REV. D
SCALE: NONE		REF: 91-577380/389	SHEET 2 OF 2

91-629160/169 SHEET 2 OF 2 D

91-629160/169 SHEET 2 OF 2 D