

B Series



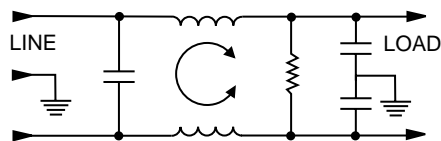
UL Recognized
CSA Certified
VDE Approved

B Series

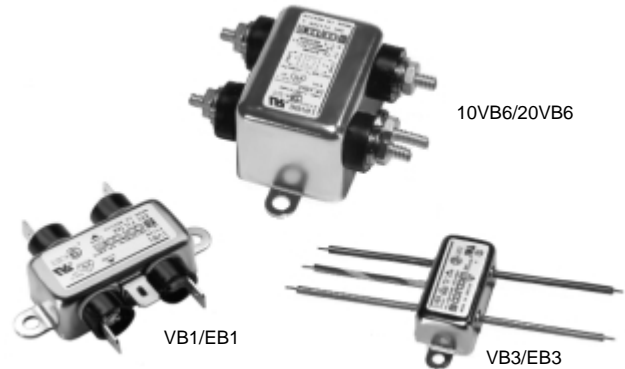
The B series RFI power line filters are general purpose common-mode filters effectively providing RFI control of line-to-ground noise in a small size at low cost. These filters are designed to meet a wide variety of electronic and electrical applications and are available in a broad selection of current ratings and termination styles.

The EB models meet the very low leakage current requirements of VDE portable equipment, and (120 Volt) UL544 non-patient medical equipment.

Electrical Schematic



Resistor location for reference only.



Specifications

Maximum leakage current, each line-to-ground		
	VB Models	EB Models
@ 120 VAC 60 Hz:	.4 mA	.21 mA
@ 250 VAC 50 Hz:	.7 mA	.36 mA
Hipot rating (one minute):		
line-to-ground		2250 VDC
line-to-line		1450 VDC
Operating frequency:		
		50/60 Hz
Rated voltage (max.):		
		250 VAC
Rated current:		
1VB/1EB		1A
2VB/2EB		2A
3VB/3EB		3A
5VB/5EB		5A
10VB/10EB		10A
10VB6		10A
20VB/20EB		20A
30VB6		30A

Minimum insertion loss in dB:

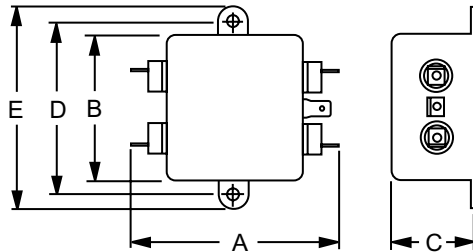
Line-to-ground in 50 ohm circuit

Current Rating	Frequency-MHz					
	.15	.5	1	5	10	30
VB Models						
1A, 3A	15	30	38	50	50	50
2A, 5A, 10A, 20A, 30A	7	20	25	40	45	48
EB Models						
1A, 3A	15	29	35	45	45	48
2A, 5A, 10A, 20A	7	19	23	34	37	42

B Series

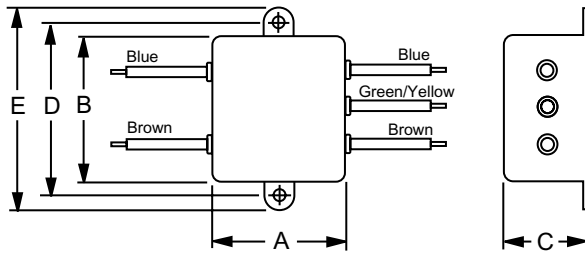
Case Styles

B1



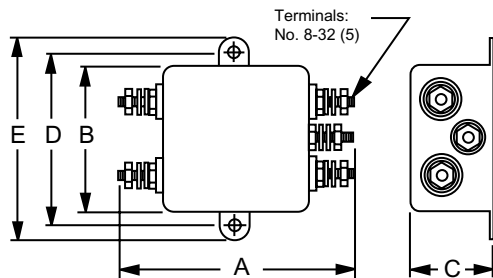
Typical dimensions:
 Terminals: .250 [6.35] (5)
 Slot: .07 x .16 [1.8 x 4.1]
 Holes: .07 [1.8] Dia.(4)
 Mounting holes: .188 [4.78] Dia.(2)

B3



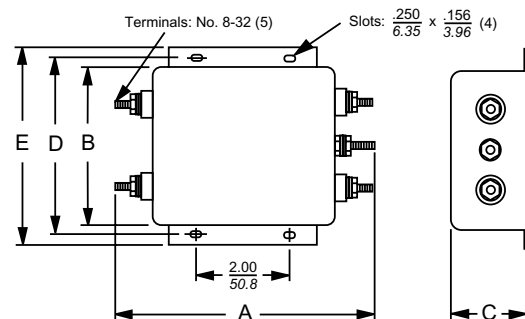
Typical dimensions:
 Wire Leads: 4.0 [101.6] Min.
 Mounting holes: .188 [4.78] Dia.(2)

10VB6 & 20VB6



Typical dimensions:
 Mounting holes: .188 [4.78] Dia.(2) Torque: 18±2 in. lb.

30VB6



Case Dimensions

Part No.	A (max)	B (max)	C (max)	D $\pm .015$ $\pm .38$	E (max)
1VB1, 1EB1,	2.25	1.82	0.66	2.125	2.53
2VB1, 2EB1	57.2	46.2	16.8	53.98	64.3
1VB3, 1EB3,	0.96	1.82	0.66	2.125	2.53
2VB3, 2EB3	24.4	46.2	16.8	53.98	64.3
3VB1, 3EB1,	2.61	1.82	0.78	2.125	2.53
5VB1, 5EB1	66.3	46.2	19.8	53.98	64.3
3VB3, 3EB3,	1.32	1.82	0.78	2.125	2.53
5VB3, 5EB3	33.5	46.2	19.8	53.98	64.3
10VB1, 10EB1	2.61	1.82	1.16	2.125	2.53
	66.3	46.2	29.5	53.98	64.3
10VB3, 10EB3	1.32	1.82	1.16	2.125	2.53
	33.5	46.2	29.5	53.98	64.3
10VB6	2.72	1.82	1.16	2.125	2.53
	69.1	46.2	29.5	53.98	64.3
20VB1, 20EB1	3.36	2.07	1.16	2.375	2.81
	85.3	52.6	29.5	60.33	71.4
20VB6	3.46	2.07	1.16	2.375	2.81
	87.9	52.6	29.5	60.33	71.4
30VB6	5.34	3.38	1.53	3.750	4.20
	135.6	85.9	38.9	95.3	106.7

Part Numbers

1VB1	1EB1
1VB3	1EB3
2VB1	2EB1
2VB3	2EB3
3VB1	3EB1
3VB3	3EB3
5VB1	5EB1
5VB3	5EB3
10VB1	10EB1
10VB3	10EB3
10VB6	20EB1
20VB1	
20VB6	
30VB6	