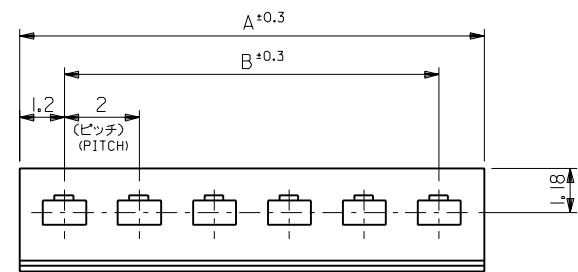
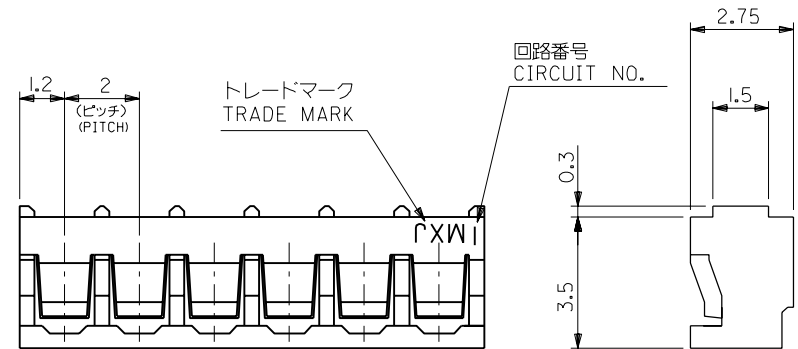
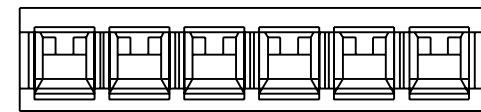


基板取付穴推奨寸法

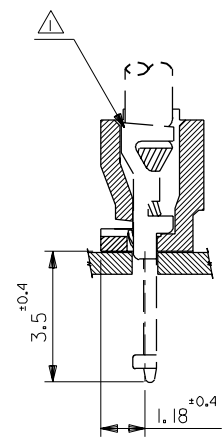
(基板厚: $t=1\sim1.6$ mm)
 RECOMMENDED PC BOARD HOLE DIMENSION
 (THICKNESS: $t=1\sim1.6$ mm)



回路番号
CIRCUIT NO.

注記
NOTE

△ 適合ターミナル: 50034-8*00
 APPLICABLE TERMINAL: 50034-8*00



28	30.4	51015-1500	15
26	28.4	↑ -1400	14
24	26.4	-1300	13
22	24.4	-1200	12
20	22.4	-1100	11
18	20.4	-1000	10
16	18.4	-0900	9
14	16.4	-0800	8
12	14.4	-0700	7
10	12.4	-0600	6
8	10.4	-0500	5
6	8.4	-0400	4
4	6.4	↓ -0300	3
2	4.4	51015-0200	2
B	A	ENG.NO.	種数 NO. OF CKT

材料 MATERIAL ナイロン66, UL94V-0 NYLON66, UL94V-0		再作図 REDRAWN LUC703101		DRAWN BY '96/05/28 H.IIJJIMA		CHK'D BY '96/05/28 M.FUKUSHIMA	
仕上げ FINISH —		変更内容 REVISION RECORD		APP'D BY '96/05/28 M.ENOMOTO		M.F	
適用電線範囲 WIRE RANGE —		DR. / DATE		M.F		'96/05/20	
被覆外径 INS. RANGE —		DR. / DATE		M.F		'96/05/28	

molex MOLEX-JAPAN CO.,LTD. 日本モレックス株式会社	
REVISE ONLY ON CAD SYSTEM	
TITLE 名称 2.0 BOARD IN CONN. HSG.	
DWG. NO. SD-51015-**-00	REV B

角度 ANGLE	±3°
30以上 OVER	±0.3
10以上 30未満 OVER UNDER	±0.25
10未満 UNDER	±0.2
一般公差 GENERAL TOLERANCES	