

TABLE 6. HEXAGONAL ORDINARY (OR FULL) NUTS AND THIN (OR LOCK) NUTS

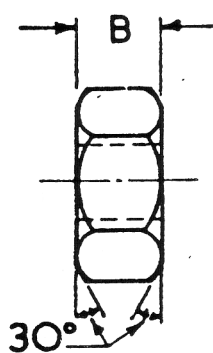


Fig. 9. Hexagonal ordinary nut

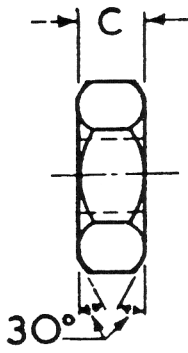
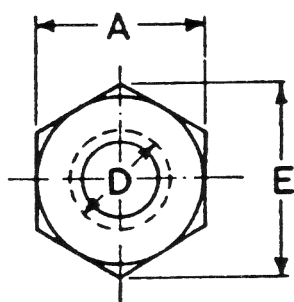


Fig. 10. Hexagonal thin (or lock) nut

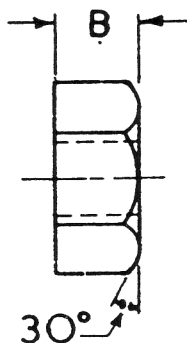


Fig. 11. Hexagonal ordinary nut

Alternative chamfering permissible on sizes 13 B.A. and smaller. (see Clause 9b).

1		2		3		4		5		6		7		8		9		10		11	
B.A. No.		Nominal diameter of thread D		Width across flats A		Width across corners E		Thickness													
								Ordinary (or full) nuts B		Thin (or lock) nuts C											
								max.	min.	max.	min.	max.	min.								
		mm.	in.	in.	in.	in.	in.	in.	in.	in.	in.	in.	in.	in.	in.	in.	in.	in.	in.	in.	
Preferred	2	4.7	0.185	0.324	0.319	0.37	0.167	0.157	0.123	0.113											
	4	3.6	0.142	0.248	0.243	0.29	0.135	0.125	0.094	0.084											
	6	2.8	0.110	0.193	0.189	0.22	0.105	0.095	0.073	0.063											
	8	2.2	0.087	0.152	0.149	0.18	0.082	0.075	0.058	0.051											
	10	1.7	0.067	0.117	0.114	0.14	0.064	0.057	—	—											
	12	1.3	0.051	0.090	0.088	0.10	0.049	0.044	—	—											
Second choice	0*	6.0	0.236	0.413	0.408	0.48	0.213	0.203	0.157	0.147											
	1	5.3	0.209	0.365	0.360	0.42	0.188	0.178	0.139	0.129											
	3	4.1	0.161	0.282	0.277	0.33	0.153	0.143	0.108	0.098											
	5	3.2	0.126	0.220	0.216	0.25	0.120	0.110	0.084	0.074											
Not normally stocked	7	2.5	0.098	0.172	0.169	0.20	0.094	0.087	—	—											
	9	1.9	0.075	0.131	0.128	0.15	0.071	0.064	—	—											
	11	1.5	0.059	0.103	0.101	0.12	0.056	0.051	—	—											
	13	1.2	0.047	0.083	0.081	0.10	0.045	0.040	—	—											
	14	1.0	0.039	0.069	0.067	0.08	0.037	0.032	—	—											
	15	0.9	0.035	0.062	0.060	0.07	0.034	0.029	—	—											
16	0.79	0.031	0.056	0.054	0.07	0.029	0.024	—	—												

* It is recommended that 1/4 in. B.S.F. nuts to B.S. 1083, 'Precision hexagon bolts, screws, nuts (B.S.W. and B.S.F. threads) and plain washers,' be used in preference to O.B.A.