

986-689 to 793

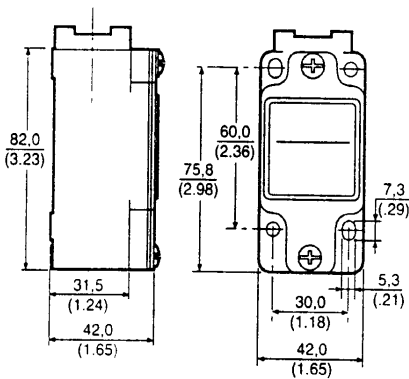
# GSA EN 50041 Safety Metal Standard



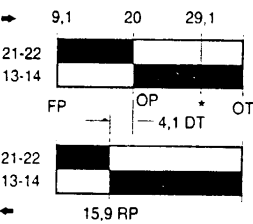
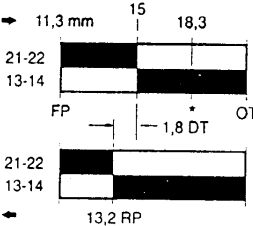
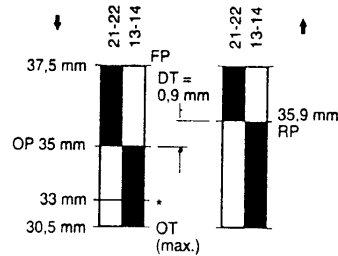
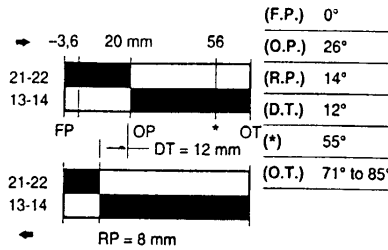
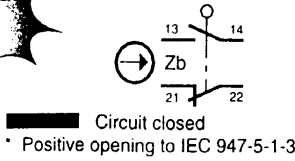
## Technical Data

- Mechanical life** up to 15 million operations
- Degree of protection** IP67  
NEMA/UL type 1, 4, 12, 13
- Temperature range**  
Operating : -25°C to +85°C  
-13°F to +185°F  
Storage : -40°C to +85°C  
-40°F to +185°F
- Approvals\*** IEC 947-5-1  
EN60947-5-1  
AC15 A300/A600  
DC13 Q300  
UL & CSA
- Vibration** 10 g conforming to IEC 68-2-6
- Shock** 50 g conforming to IEC 68-2-27  
Terminal marking to EN 50013

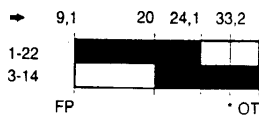
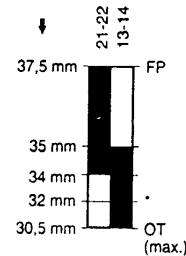
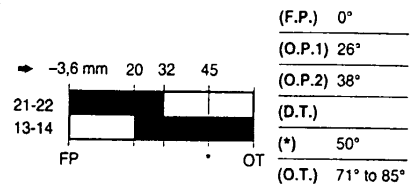
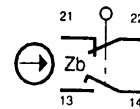
\* See Standards (page 5)



## Snap-Action Contacts



## Slow-Action Contacts MAKE BEFORE BREAK



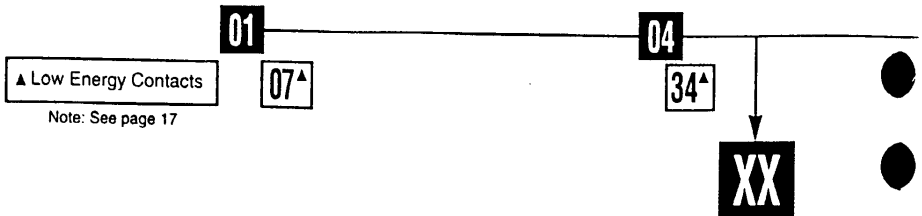
\* Point from which the positive opening is assured

## Conduit Thread

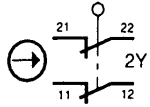
- Standard = **A**
- A** = 1/2" NPT
  - B** = PG 13,5
  - C** = 20 mm
  - D** = PF 1/2

Ordering :

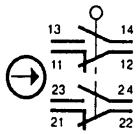
**GS** **X** **X**



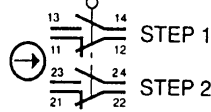
**Slow-Action Contacts**  
2 NORMALLY CLOSED



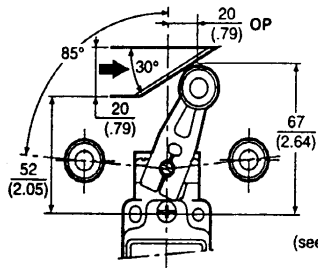
**Snap-Action Contacts**  
*DOUBLE POLE*



**Snap-Action Contacts**  
*DOUBLE POLE SEQUENTIAL*



**Actuator Types**



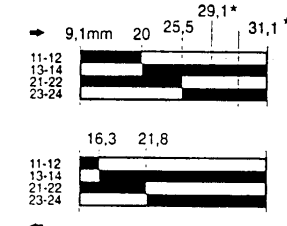
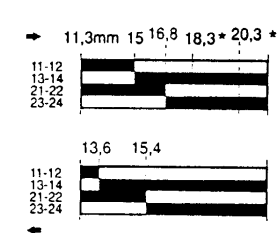
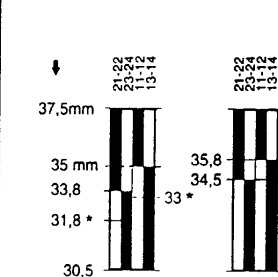
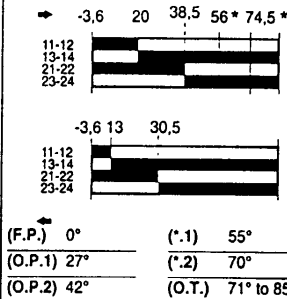
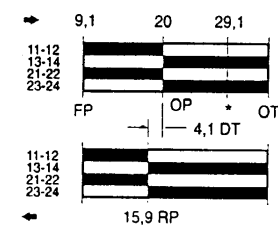
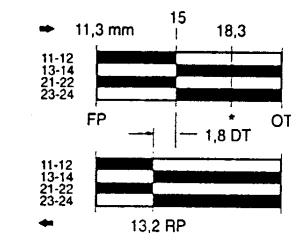
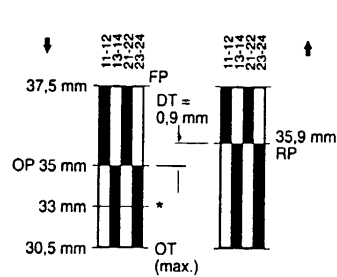
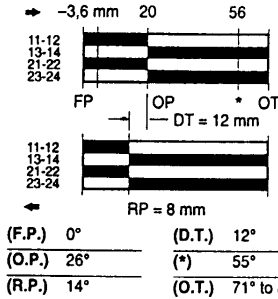
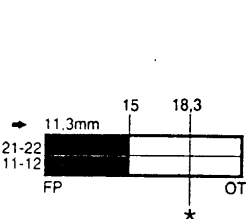
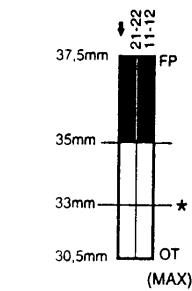
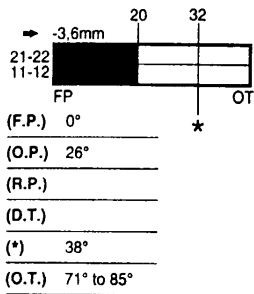
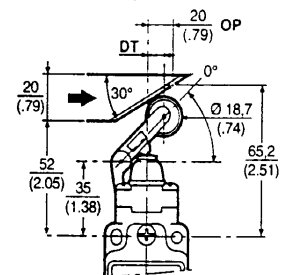
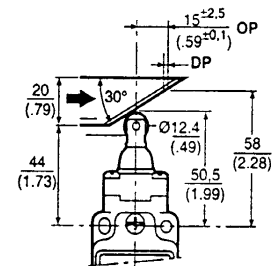
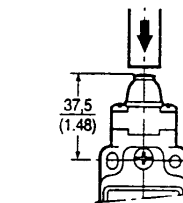
**A1B**

Additional levers available (see page 20)

**B**

**C**

**D**



**06**

**36<sup>A</sup>**

**20**

**22<sup>A</sup>**

**21**

**28<sup>A</sup>**

**XXX**