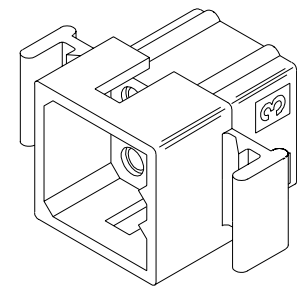
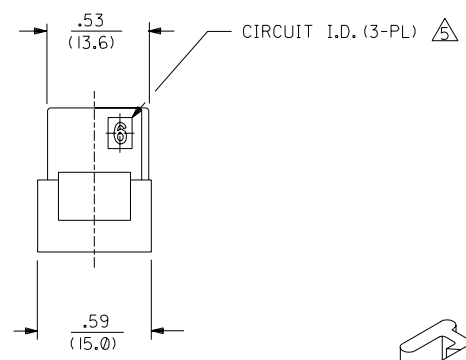
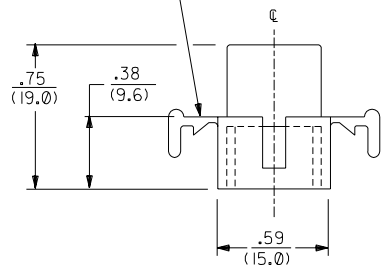
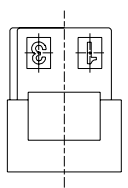
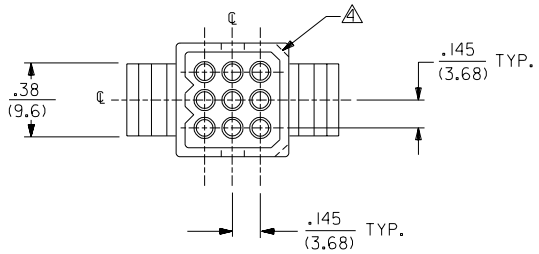


MOUNTING EAR
(WHEN SPECIFIED)
SEE DETAIL 3 OR 4
(2 PL.)



PLUG



Q	OBSOLETE P/N UCP2003-1545 AELHAG, 03/01/16
P	OBSOLETE P/N UCP2002-0270 COMERCI 01/9/26
OI	OBSOLETE -9R2 ECR U6 0358 CXC 9/15/95 RW
O	DEL 1625-9R3 PER EGN U2-1492 10-09-92 A.GUZIK
N	ADD CIRCUIT I.D. PER EGN U21408 MAB 92/09/22 RW
M	REV. & FINAL REL. PER ECR U90419 GEP 4-5-89 RW
L	REVISED & REDRAWN ECR MUI 1084 SCHAFFER 3/6/88

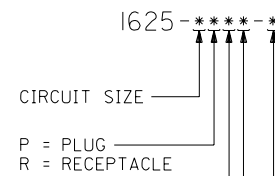
3	Q
2	Q
1	Q

DIMENSIONS SHOWN (METRIC) INCH UNLESS OTHERWISE SPECIFIED TOLERANCES: ANGULAR $\pm 1/2^\circ$		▽ = 0 ▼ = 0 REVISE ONLY ON CAD SYSTEM													
<table border="1"> <tr> <th></th> <th>INCH</th> <th>METRIC</th> </tr> <tr> <td>3 PLACE</td> <td>$\pm .010$</td> <td>---</td> </tr> <tr> <td>2 PLACE</td> <td>$\pm .014$</td> <td>± 0.25</td> </tr> <tr> <td>1 PLACE</td> <td>---</td> <td>± 0.36</td> </tr> </table>			INCH	METRIC	3 PLACE	$\pm .010$	---	2 PLACE	$\pm .014$	± 0.25	1 PLACE	---	± 0.36	TITLE .062/(1.57) HOUSINGS PLUG & RECEPTACLE 9 CIRCUIT, .145/(3.68)CTRS	
	INCH	METRIC													
3 PLACE	$\pm .010$	---													
2 PLACE	$\pm .014$	± 0.25													
1 PLACE	---	± 0.36													
DRAFT WHERE APPLICABLE MUST REMAIN WITHIN DIMENSIONS		MOLEX INCORPORATED LISLE, ILL. 60532 U.S.A.													
DRWG. BY: JJS APP'D. BY: RAS		SHEET NO. 1 OF 3 DATE 2 / 5 / 88													
CHK'D. BY: RW SCALE 2 : 1		PART NO. SD-1625-9* SEE CHART													
FILE NAME S16259X1		THIS DRAWING CONTAINS INFORMATION THAT IS PROPRIETARY TO MOLEX INC. AND SHOULD NOT BE USED WITHOUT WRITTEN PERMISSION													

PLUG	
PART NO.	ENG. NO.
03-06-2091	I625-9P
03-06-2092	I625-9P1
23-06-2091	I625-9P-C
23-06-2092	I625-9P1-C
04-06-6091	I625-9P1-B
03-06-7091	I625-9PBK
03-06-7092	I625-9P1BK
	OBSOLETE

RECEPTACLE	
PART NO.	ENG. NO.
03-06-1091	I625-9R
03-06-1092	I625-9R1
23-06-1091	I625-9R-C
23-06-1092	I625-9R1-C
03-06-6091	I625-9RBK
03-06-6092	I625-9R1BK
	OBSOLETE

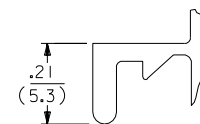
LEGEND:



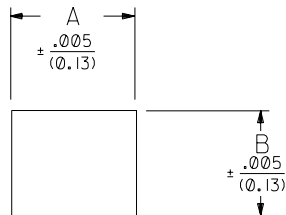
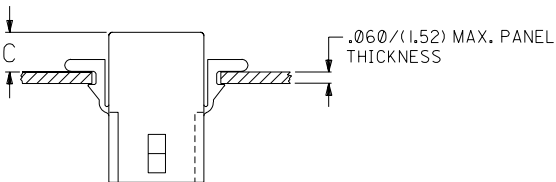
MOUNTING EAR & DETENT COMBINATIONS:
 BLANK=PLUG OR RECEPTACLE WITH STANDARD EARS
 I=PLUG OR RECEPTACLE WITHOUT EARS
 4=PLUG OR RECEPTACLE WITH PREBENT EARS

BLANK = NATURAL COLOR
 AM = AMBER BK = BLACK BU = BLUE
 BN = BROWN CY = GRAY GN = GREEN
 OR = ORANGE RD = RED YW = YELLOW

MATERIAL: A= MATERIAL CODE A
 B= MATERIAL CODE B
 C= MATERIAL CODE C



DETAIL 3
 STANDARD MOUNTING EAR
 (SCALE 4:1)

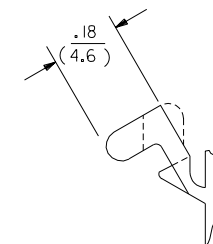
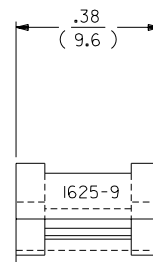


RECEP.	.650 (16.51)	.552 (14.02)	.21 (5.3)	.22 (5.6)
PLUG	.752 (19.10)	.615 (15.62)	.20 (5.1)	.21 (5.3)
PART	DIM. A	DIM. B	DIM. C (STANDARD EAR)	DIM. C (PREBENT EAR)

RECOMMENDED HOLE PATTERN

NOTES:

- MATERIAL CODES:
 A-NYLON TYPE 6/6, 94V-2
 B-NYLON TYPE 6/6, 94V-0
 C-POLYPROPYLENE, 94V-0
- THIS PRODUCT COMPLIES WITH MOLEX PRODUCT SPEC PS-02-06.
- HOUSINGS FOR USE WITH MOLEX .062 DIA. TERMINALS.
- SOME PARTS MAY HAVE THIS CORNER CHAMFERED.
- CIRCUIT I.D. NUMBERS APPEAR ONLY ON TOOLS BUILT AFTER 11/1/92.



DETAIL 4
 PREBENT MOUNTING EAR
 (SCALE 4:1)

Q	SEE SHEET 1
P	SEE SHT. 1
OI	SEE SHT. 1
O	SEE SHT. 1
N	SEE SHT. 1
M	SEE SHT. 1
L	SEE SHT. 1
LTR.	REVISIONS

DRWG. BY: <i>JJS</i>	CHK'D. BY: <i>RW</i>
APP'D. BY: <i>RAS</i>	SCALE: 2:1

DIMENSIONS SHOWN (METRIC) INCH
 UNLESS OTHERWISE SPECIFIED
 TOLERANCES: ANGULAR ± .030°

5 PLACE ± .010	---
2 PLACE ± .014	± 0.25
1 PLACE ---	± 0.36

DRAFT WHERE APPLICABLE MUST REMAIN WITHIN DIMENSIONS

FILE NAME: S1625R33
 TITLE: .062/(1.57) HOUSINGS PLUG & RECEPTACLE
 9 CIRCUIT .145/(3.68)CTRS
 MOLEX INCORPORATED U.S.A.
 SHEET NO. 3 DATE 2/12/88
 PART NO. SD-1625-9*
 SEE CHART
 THIS DRAWING CONTAINS INFORMATION THAT IS PROPRIETARY TO MOLEX INC. AND SHOULD NOT BE USED WITHOUT WRITTEN PERMISSION.