

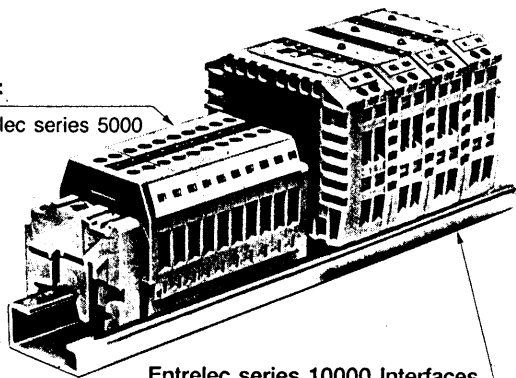
Presentation

Applications

The series 10000 enables the packaging of an electronic interface in a standard terminal block module.

Control circuit :

example : Entrelec series 5000



Entrelec series 10000 Interfaces

examples : Rectifier 220 V ~ a-c
24 V = d-c relay
Alarm circuit

2 types of blocks are available :

- empty blocks giving the user choice of design
- equipped blocks : many circuits in stock (see page 8).
Compression clamp connection only for equipped blocks.

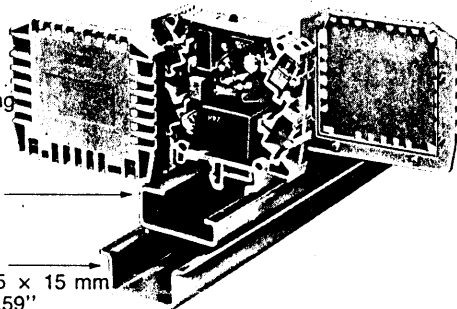
Description

Unit is moulded of grey polyamide, made out of 3 parts (see page 4).

Compression clamp mounting on standard rails :

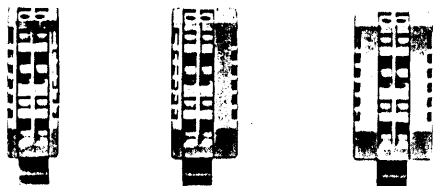
EN 50035 - DIN 46277/1
NFC 63018 32 x 15 mm
1.26" x .59"

EN 50022 - DIN 46277/3
NFC 63015 35 x 7.5 or 35 x 15 mm
1.38" x 2.95" or 1.38" x .59"
(see page 21).



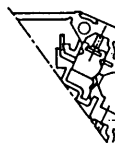
3 possible body sizes :

with 1 unit + 2 plates of different thicknesses (see page 4).

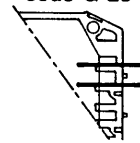


5 types of connection (many possible combinations) (see page 5).

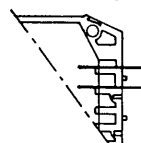
Compression clamp code A



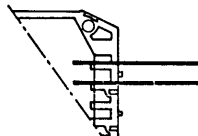
Quick connect tabs series 110 (2,8 x 0,8 mm) code G 28



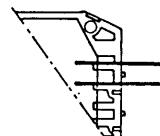
Quick connect tabs serie 110 (2,8 x 0,5 mm) code G 25



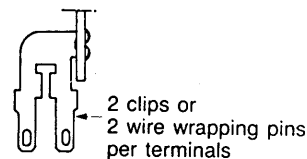
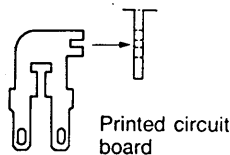
Wire wrapping code M



Wire mini wrapping code Mm



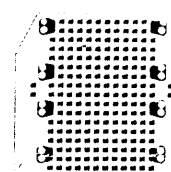
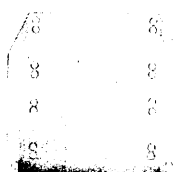
Each terminal is equipped with 2 pins for soldering on printed circuit board.



2 types of printed circuit board (see page 20).

Copper card for small series

Prepunched card for prototype



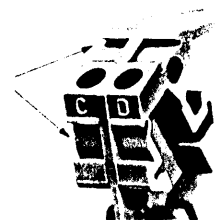
2 types of marking for the connection terminals

1 - pre-marked on the units by letters

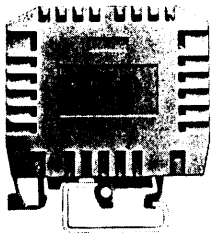
2 - housing for complementary marking (see page 22).



Housings for marking



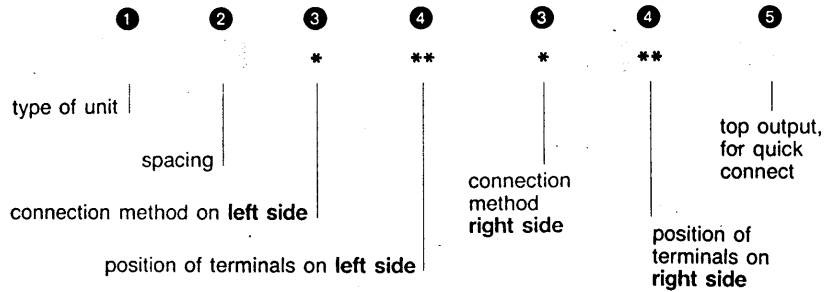
How to select a terminal block



Rail : PR1 - EN 50035

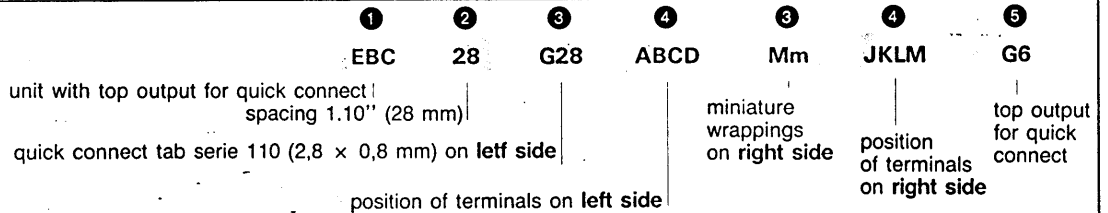
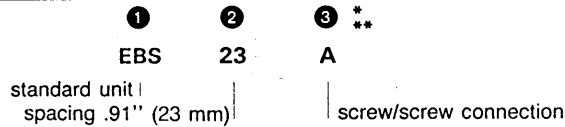
- * When the connection method is the same for both sides, only fill in one space.
- ** When one or both sides are fully equipped, do not fill in this space.

Standard empty units, see page 7
Special empty units : minimum order 100 blocks



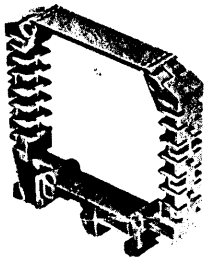
Examples

- * Fully equipped block with same method of connection on both sides
- ** Both sides are fully equipped.



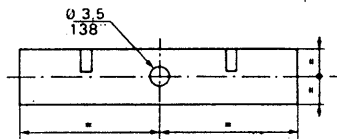
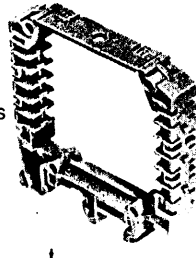
The type of unit

Standard unit "EBS"



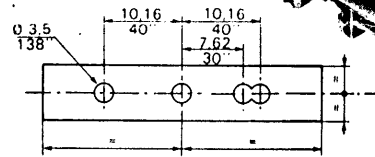
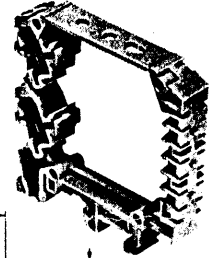
Unit with 2 outputs for quick connect "EBC"

- 1 hole for an indicator or potentiometer, etc.
- 2 outputs for quick connect tabs
- 1 x serie 250 (6,3 x 0,8 mm)
- 2 x serie 110 (2,8 x 0,8 mm)



Unit with 4 holes "EBP"

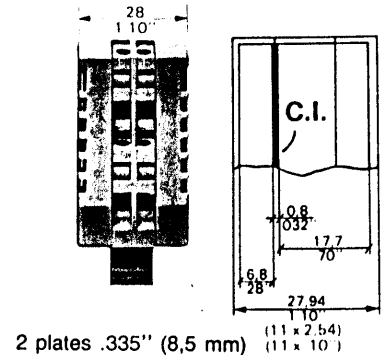
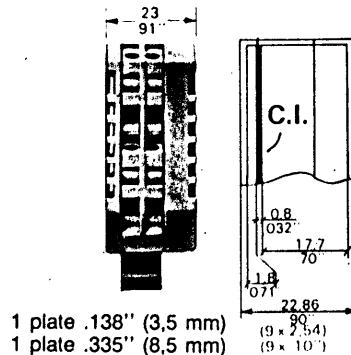
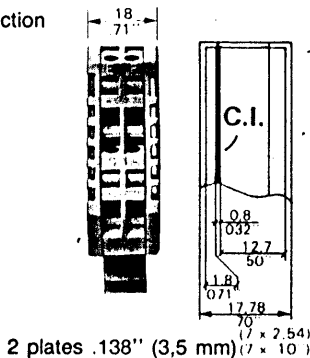
for indicators or potentiometer, etc.



The spacing

Determined in function to the usable internal volume

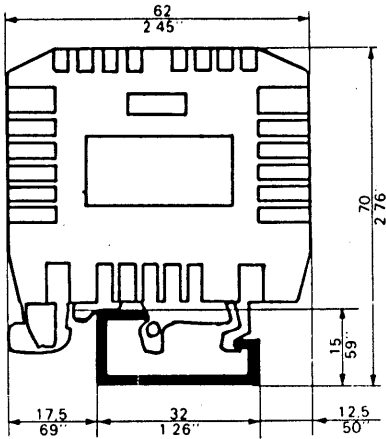
- Plate th. .138" (3,5 mm) : PFN1 - P/N : 113 091.00
- Plate th. .335" (8,5 mm) : PFN2 - P/N : 113 095.04



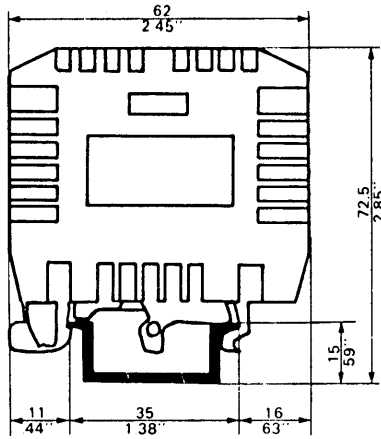
Space requirements

blocks with screw connection "A"

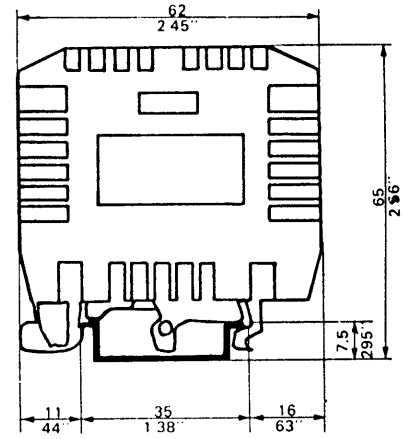
on EN 50035 rail



on EN 50022 rail
35 x 15 mm

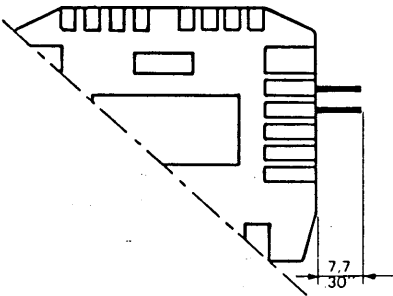


on EN 50022 rail
35 x 7,5 mm

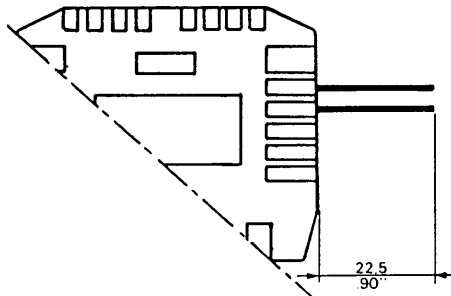


space requirements :

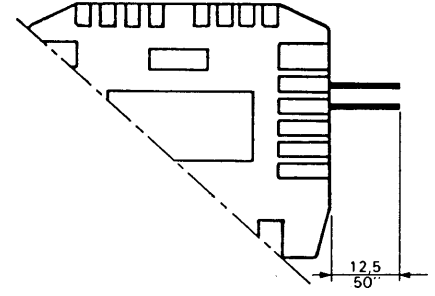
with quick connect
code G



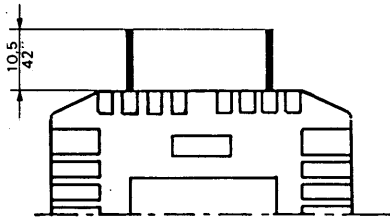
with standard wrapping
code M



with mini wrapping
code Mm

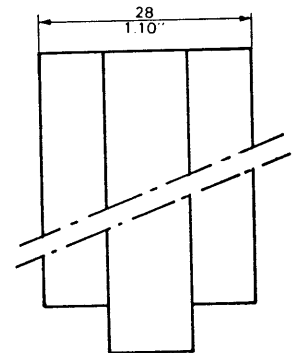
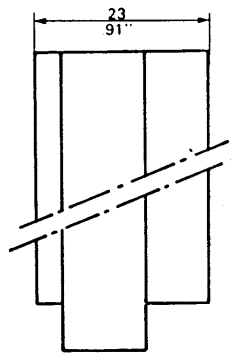
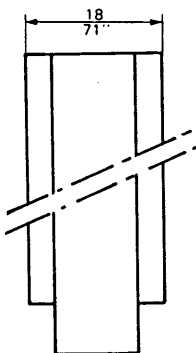


Blocks with quick connect on the top (type EBC)



2 outputs for quick connect tabs
1 x serie 250 (6,3 x 0,8 mm)
2 x serie 110 (2,8 x 0,8 mm)

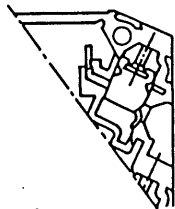
spacing



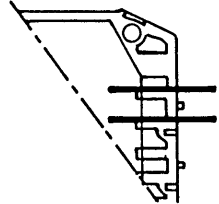
The connection ³

Screw terminals blocks 8 terminals. Screw/Quick connect or wrapping blocks : 4 screw terminals, 6 double terminals with quick connect or wrapping.
Quick connect or wrapping blocks : 12 double terminals with quick connect or wrapping

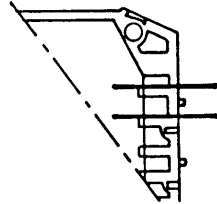
A
Screw



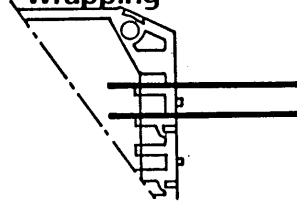
G 28 serie 110
(2,8 x 0,8 mm)



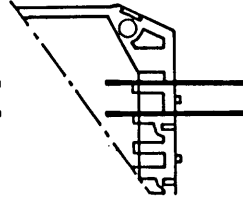
G 25 serie 110
(2,8 x 0,5 mm)



M
Standard
wrapping



Mm
Mini Wrapping

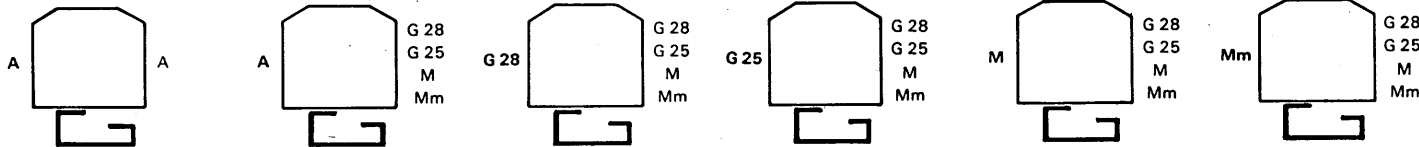


Connection	1 screw terminal	2 x Quick connect tabs serie 110 (2,8 x 0,8 mm)	2 x quick connect tabs serie 110 (2,8 x 0,5 mm)	2 x 2 wrappings	2 x 2 wrappings
	HO 7 VR 4 mm ²			.030"x.060" (0,78 x 1,52 mm)	.022x.028" (0,56 x 0,71 mm)
	HO 7 VK 2,5 mm ²	0,3 to 1,5 mm ²	0,3 to 1,5 mm ²	DIA. of wire .016" to .03" (0,41 to 0,8 mm)	DIA. of wire .010"x.015" (0,25x0,40mm)
	AWG 20 to 12	22 to 16 AWG	22 to 16 AWG	26 to 20 AWG	30 to 26 AWG
	wire stripping length .27" (7 mm) recommended screwdriver DIA. .14" (3,5mm)	(1) Insulated quick connect (2) red pre-insulated quick connect	(1) Insulated quick connect (2) red pre-insulated quick connect		

Characteristics*	NFC 20040 Cat. C NFC 63065 250	NFC 20040 Cat. C NFC 63065 50-75	NFC 20040 Cat. C NFC 63065 50-75	NFC 20040 Cat. B NFC 63065 125	NFC 20040 Cat. C NFC 63065 250
	VDE 0110 Group C 250-300	VDE 0110 Group C 60-75 (1) 30-36 (2)	VDE 0110 Group C 60-75 (1) 30-36 (2)	VDE 0110 Group C 125-150	VDE 0110 Group C 250-300
	CSA - UL 22-2 n° 14	CSA - UL 22-2 n° 14	CSA - UL 22-2 n° 14	CSA - UL 22-2 n° 14	CSA - UL 22-2 n° 14

(*) Stocking temperature : - 40° F to + 212° F ; - 40° C to + 100° C.
Note : The quick connect tabs can be used for a soldered connection.

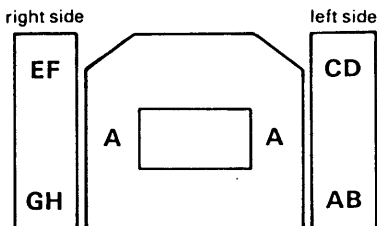
Possible combinations :



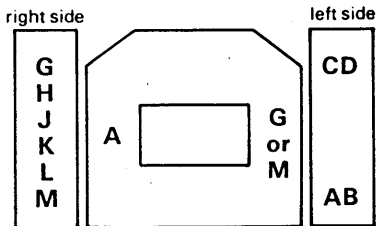
Terminal positions ⁴

The pre-marking shown on the units permits positioning of the terminals according to requirements.

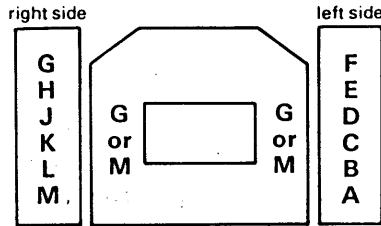
Blocks with screw on both sides



Blocks with quick connect or wrapped connection



Blocks with quick connect or wrapping/quick connect or wrapping



Top output for quick connect ⁵

(2 outputs marked 1 and 2 on the unit). Only the EBC unit can be used.
2 tabs compatible for 1 x serie 250 (6,3 x 0,8 mm) or 2 x serie 110 (2,8 x 0,8 mm) quick connect (see type of unit page 4).