



Web-site : www.rflocker.com
Tel : 82-31-715-7117
Fax : 82-31-719-7551
e-mail : locker@rflocker.com

www.rflocker.com



nDolphin

RF Digital Locker Lock

User Manual





Product Introduction

1. Contents



Included User Manual & Paper Pattern.

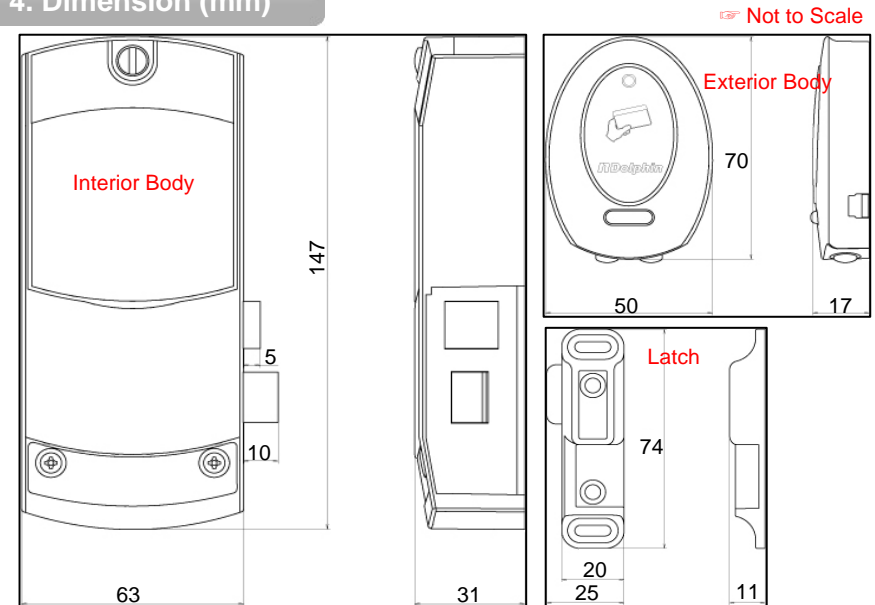
2. Key Features

- Automatic lock feature
- External emergency power source for battery exhaustion
- Signal alert for battery exchange (Approx. 40x use after first signal alert)
- Signal alert for irregular locked door
- Event management. (With added network feature. Optional)
- Remote observation and control. (With added network feature. Optional)
- Signal alert for forced breakage

3. Specification

Item	Spec.
Model Name	nDolphin RF Digital Locker Lock
Dimension	● Front: 17(D) x 50(W) x 70(H)mm, Back: 31(D) x 63(W) x 47(H)mm
Material	●Front : Iron Die Casting/ABS Back : Iron Die Casting/ABS
Power	DC 6V(1.5V AA Size) 4 Alkaline Batteries
Construction	Dual Deadbolt (Deadbolt, Deadbolt for center)
Key	ISO 15693/14443-A 13.56MHz Card, Online network (option), USB PDA (option)
Temperature	- 30℃ ~ + 80℃
Emergency Power	External 9V Alkaline Battery


4. Dimension (mm)





User Guide

1. Administrator Registration

1. Remove battery case cover and press 'administrator registration button' in right bottom corner. (See Picture 1)
2. When you hear a 'beep', bring card key (to be set as administrator card key) near the exterior body (). (See Picture 2)
3. For successful registration, you will see 'Green' light on LED. If failed, 'Red' light will appear.
4. For continued administrator card key registration, bring additional card near the exterior body while LED is 'Green'. (Maximum 7 administrator card keys are allowed)
5. When registration process is completed, pressing 'administrative registration button' will finalize the administrator registration process. (For new and additional registrations of master key, previous keys (guests, maids, etc) must be re-registered)



Picture 1



Picture 2

2. Guest Card Registration (When Administrator Card Key is registered)

1. Press 'initiation button' about 2~4 seconds until you hear a 'beep'. (See Picture 1)
2. After a 'beep' LED turns to 'Orange' . Bring an administrator card key near exterior body, then a 'beep' sounds and LED turns to 'Green', afterward, bring a guest card to exterior body. When a 'beep' sounds, guest card is registered. **Caution:** 1) When locker door is opened with administrator card key, guest card key is cancelled and no longer works as door key. 2) When administrator key is not registered, any card key can be registered. Therefore, register an administrator key before use.



3. Opening the door

1. Press 'initiation button'.
2. LED turns to 'Green'.
3. Bring Registered card key to near exterior body.
4. After a 'beep' door unlocks and using exterior body as a handle, open door.



4. Using emergency power source

1. Use one 9V Alkaline battery.
2. Apply battery to pop-out terminal. (See Picture 3)
3. When LED turns 'Green', bring card key to near exterior body.
4. After a 'beep' door unlocks. (Caution: For emergency power source, please only use 9V Alkaline battery.)



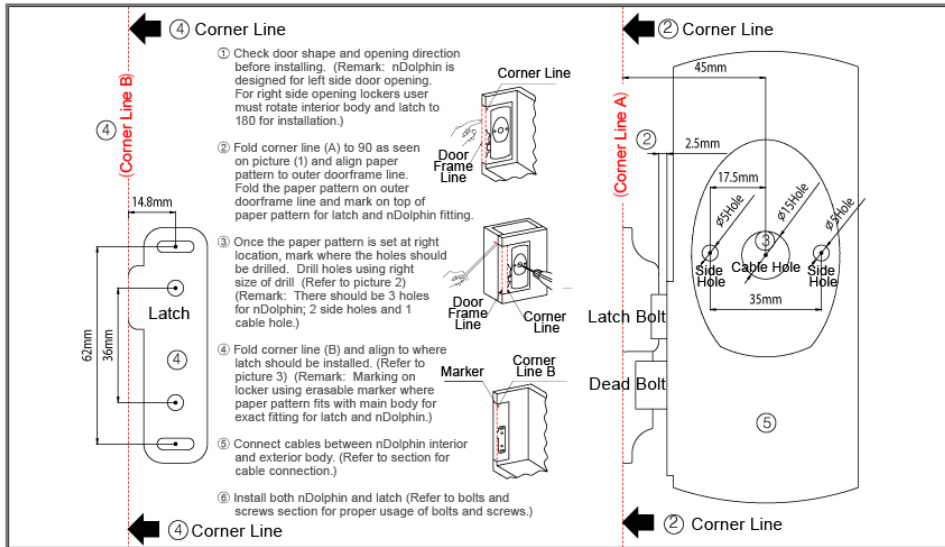
Picture 3





Installation Guide

1. Paper Pattern



⚠ Not to Scale. Actual size pattern included. Please check the content.

2. Installation Steps

1. Latch setting

- Loosely tighten top and bottom screws.
- Adjust to fit to proper location. Align popped out portion to fit to end of door frame.
- Tighten screws.
- Tighten 2 additional screws in between.



2. Interior iron plate and exterior body setting

- Cables should be passed through cable hole before interior iron plate is joined with exterior body using bolts.
- Using 3 screws, tighten interior iron plate.

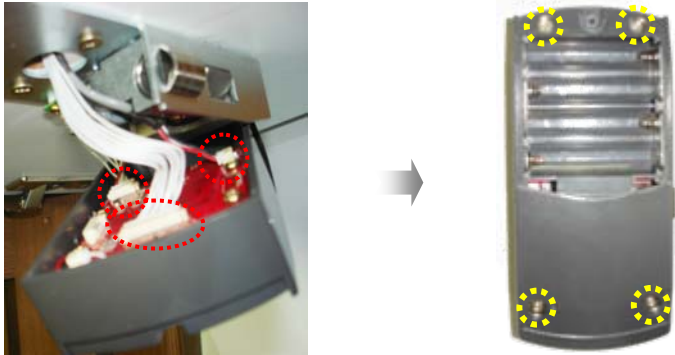




Installation Guide

3. Connecting cables and installing interior body

- Connect 3 cables to interior body.
(Please refer to cable setting section.)
- Organized cables before case is installed using 4 bolts.



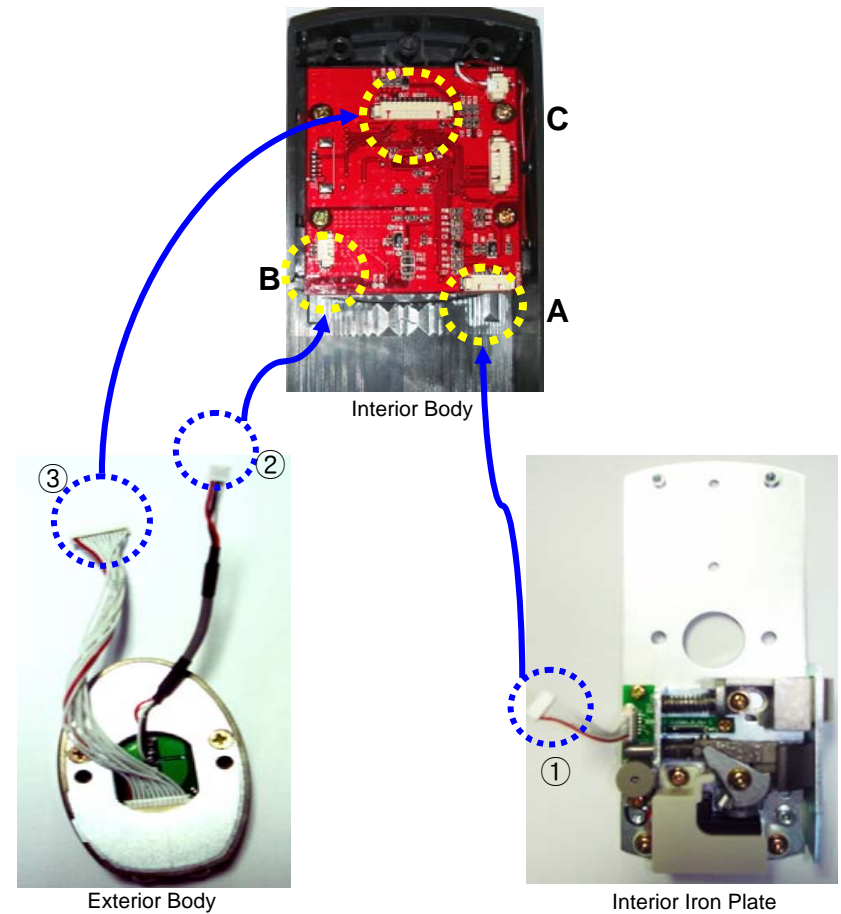
4. Battery insertion and applying sticker

- Insert 4 AA batteries.
- Cover the batteries with case and fasten bolt.
- Apply sticker to cover bolts.



3. Cable Setting





1. Connect 3 cables to proper slots.
· Please refer to below pictures.
2. Please make sure cables are connected properly and organized so will not be too Squeezed when closing the case.





Installation Guide

4. Bolts and Screws

Shape	Usage
	<ul style="list-style-type: none"> To join exterior and interior body $\phi 5$ Hole (2)
	<ul style="list-style-type: none"> To join Interior body and interior iron plate (4)
	<ul style="list-style-type: none"> To install Latch (4) To tighten Interior iron plate (3)
	<ul style="list-style-type: none"> Battery cover (1)

5. Colors Available

 <p>BR1000 Outer Color - Black Pearl Inner Color - Red Wine</p>	 <p>BM1000 Outer Color - Black Pearl Inner Color - Metallic Silver</p>	 <p>BB1000 Outer Color - Black Pearl Inner Color - Black Pearl</p>
 <p>CR1000 Outer Color - Chocolate Inner Color - Red Wine</p>	 <p>CM1000 Outer Color - Chocolate Inner Color - Metallic Silver</p>	 <p>CB1000 Outer Color - Chocolate Inner Color - Black Pearl</p>
 <p>MR1000 Outer Color - Metallic Silver Inner Color - Red Wine</p>	 <p>MM1000 Outer Color - Metallic Silver Inner Color - Metallic Silver</p>	 <p>MB1000 Outer Color - Metallic Silver Inner Color - Black Pearl</p>
 <p>RR1000 Outer Color - Red Wine Inner Color - Red Wine</p>	 <p>RM1000 Outer Color - Red Wine Inner Color - Metallic Silver</p>	 <p>RB1000 Outer Color - Red Wine Inner Color - Black Pearl</p>

