

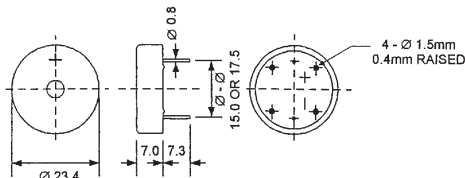
# Piezo Electric Alarms (continued)

## Piezo Electric Alarms with Internal Circuitry

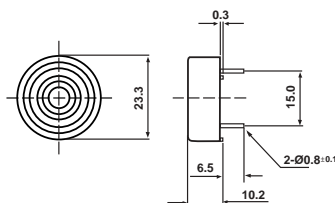
Part Number	Rated Voltage (VDC)	Operating Voltage (VDC)	Max. Current (mA)	Min. Sound Output Level	Terminal Type	Tone Mode Pulse/Second	Frequency	Operating Temperature
BRP2307P-12-C	12	8 - 18	10	85dB @ 30cm	2 Pins	Continuous	3200 ± 500Hz	-30° to +80°C
BRP2307P-12-CFS*	12	3 - 15	5	75dB @ 30cm	2 Pins	Continuous	4000 ± 500Hz	-20° to +105°C
BRP2307PH-12-C	12	3 - 24	5	75dB @ 30cm	2 Horizontal Pins 2 Vertical Pins	Continuous	3500 ± 500Hz	-20° to +70°C
BRP2307PV-12-C	12	3 - 24	5	75dB @ 30cm	2 Vertical Pins	Continuous	3500 ± 500Hz	-20° to +70°C
BRP2310P-12-CP	12	3 - 24	15	80dB @ 30cm	2 Pins	Intermittent 1:1	3500 ± 500Hz	-20° to +80°C
BRP2312L-12-C	12	3 - 20	8	85dB @ 30cm	2 Leadwires	Continuous	3000 ± 500Hz	-20° to +60°C
BRP2317L-12-C	12	3 - 16	8	90dB @ 30cm	2 Leadwires	Continuous	3700 ± 500Hz	-20° to +60°C
BRP2410P-12-C	12	3 - 20	10	95dB @ 10cm	2 Pins	Continuous	3400 ± 500Hz	-20° to +70°C
BRP2411P-12-CFS*	12	3 - 15	10	90dB @ 30cm	2 Pins	Continuous	3700 ± 500Hz	-40° to +120°C
BRP2416P-12-C	12	3 - 20	10	85dB @ 30cm	2 Pins	Continuous	2800 ± 500Hz	-20° to +70°C
BRP2416P-12-CFS*	12	3 - 20	10	85dB @ 30cm	2 Pins	Continuous	2800 ± 500Hz	-20° to +70°C
BRP2522P-12-C	12	9 - 12	50	100dB @ 30cm	2 Pins	Continuous	2800 ± 500Hz	-20° to +65°C

\*Indicates Wave Solderable and Washable

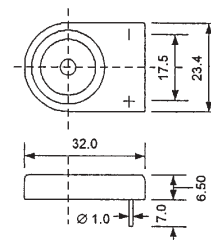
### BRP2307P-12-CFS Series



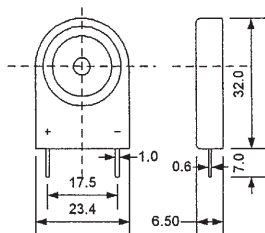
### BRP2307P-12-C Series



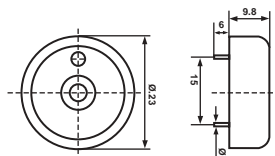
### BSP2307PH-12-C Series



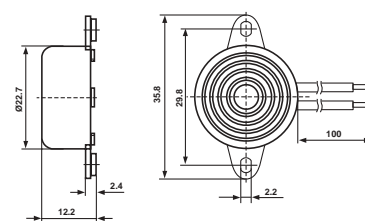
### BSP2307PV-12-C Series



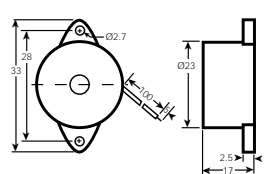
### BRP2310P-12-CP Series



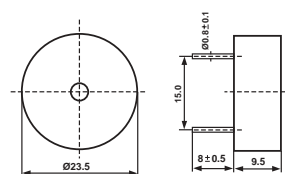
### BRP2312L-12-C Series



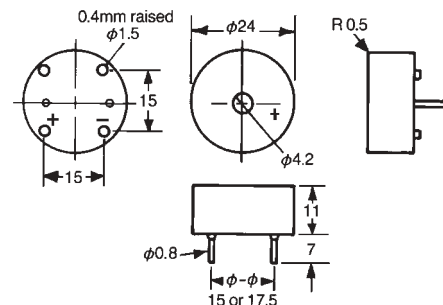
### BRP2317L-12-C Series



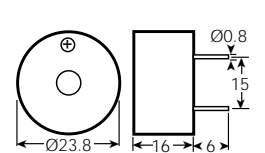
### BRP2410P-12-C Series



### BRP2411P-12-CFS Series



### BRP2416P-12-C Series



### BRP2522P-12-C Series

