

C 091 B

Female receptacle, bayonet locking



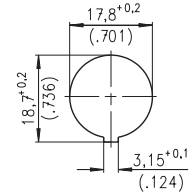
Ring nut



Bayonet outside



Bayonet inside



Panel cutout

Description	Drawing	No. of cont.	Part Number solder termination		Part Number Crimp termination ¹⁾
			Contact plating silver	Contact plating gold ²⁾	
Female receptacle, bayonet locking, outside, shell: full plastic, front mounting, termination: solder or crimp, panel mounting with ring nut ³⁾ , contact plating: silver or gold. solder area: tin plated		3 DIN	T 3277 000	T 3277 018 ⁴⁾	T 3277 050
		4 IEC	T 3327 000	T 3327 018 ⁴⁾	T 3327 050
		5	T 3377 000	T 3377 018 ⁴⁾	T 3377 050
		5 S DIN	—	—	—
		6 DIN	T 3427 000	T 3427 018 ⁴⁾	T 3427 050
		7	T 3437 000	T 3437 018 ⁴⁾	T 3437 050
		7 DIN	—	—	—
		8 DIN	—	—	—
		12	—	—	—
		14	—	—	—
		Female receptacle, bayonet locking, outside, shell: full plastic, front mounting, termination: solder or crimp, snap-in-mounting, contact plating: silver or gold. solder area: tin plated	<p>max. panel thickness 1,5^{+0,25}</p>	3 DIN	T 3277 500
4 IEC	T 3327 500			T 3327 518 ⁴⁾	T 3327 550
5	T 3377 500			T 3377 518 ⁴⁾	T 3377 550
5 S DIN	T 3397 500 ⁴⁾			T 3397 518 ⁴⁾	T 3397 550 ⁴⁾
6 DIN	T 3427 500			T 3427 518 ⁴⁾	T 3427 550
7	T 3437 500			T 3437 518 ⁴⁾	T 3437 550
7 DIN	T 3447 500 ⁴⁾			T 3447 518 ⁴⁾	T 3447 550 ⁴⁾
8 DIN	T 3527 500			T 3527 518 ⁴⁾	—
12	T 3627 500			T 3627 518 ⁴⁾	—
14	T 3647 500			T 3647 518 ⁴⁾	—
Female receptacle, bayonet locking, inside, shell: full plastic, front mounting, termination: solder or crimp, snap-in-mounting, contact plating: silver or gold. solder area: tin plated	<p>max. panel thickness 1,5^{+0,25}</p>			3 DIN	T 3271 500
		4 IEC	T 3321 500	T 3321 518 ⁴⁾	T 3321 550
		5	T 3371 500	T 3371 518 ⁴⁾	T 3371 550
		5 S DIN	T 3391 500 ⁴⁾	T 3391 518 ⁴⁾	T 3391 550 ⁴⁾
		6 DIN	T 3421 500	T 3421 518 ⁴⁾	T 3421 550
		7	T 3431 500	T 3431 518 ⁴⁾	T 3431 550
		7 DIN	T 3441 500 ⁴⁾	T 3441 518 ⁴⁾	T 3441 550 ⁴⁾
		8 DIN	T 3521 500	T 3521 518 ⁴⁾	T 3521 550 ⁴⁾
		12	T 3621 500	T 3621 518 ⁴⁾	—
		14	T 3641 500	T 3641 518 ⁴⁾	—
		Female receptacle, bayonet locking, outside, shell: metal, rear mounting, termination: solder or crimp, panel mounting with ring nut ³⁾ , contact plating: silver. solder area: tin plated	<p>panel cutout see page 17</p>	3 DIN	T 3277 100
4 IEC	T 3327 100			—	T 3327 150 ⁴⁾
5	T 3377 100			—	T 3377 150 ⁴⁾
5 S DIN	T 3397 100			—	T 3397 150
6 DIN	T 3427 100			—	T 3427 150 ⁴⁾
7	T 3437 100 ⁴⁾			—	T 3437 150 ⁴⁾
7 DIN	T 3447 100			—	T 3447 150
8 DIN	T 3527 100			—	T 3527 150
12	T 3627 100 ⁴⁾			—	—
14	T 3647 100 ⁴⁾			—	—

¹⁾ Please order crimp contacts separately, see page 46 ²⁾ see remark page 23 ³⁾ Panel mounting with hex nut upon request

⁴⁾ Available upon request. Min. order qty.100 pcs/type.