

Series ALF ADJUSTABLE LOAD FEET

Features

DESCRIPTION

This series offers Adjustable Load Feet (ALF'S). Available with either a polypropylene, nylon or stainless steel conical base with a threaded stem in either zinc plated finish or all stainless steel and nut to allow for adjustment. All stems have a ball at the base to allow for tilt.

RECOMMENDED USES

For adjusting heights on worktables, machinery and conveyor systems. The stainless stem is for use in the food and pharmaceutical industries.

CARRYING CAPACITY

Where indicated are for a static constant load.

BASE DIAMETERS

30mm - 105mm

TEMPERATURE

Polypropylene base: -10°C to +60°C

Nylon base: -20°C to +80°C

Stainless Steel base - please advise conditions.

ABBREVIATIONS

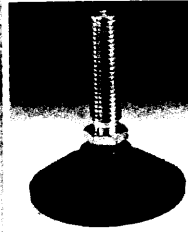
MS in code = mild steel zinc plated

SS in code = stainless

BD in code = bolt down

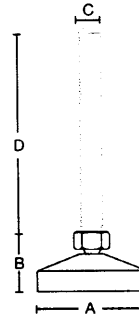
Polypropylene and Nylon Load Foot

BLACK POLYPROPYLENE BASE WITH ZINC PLATED STEM



Base diameter A	Height to stem B	Stem size Cx D	Static load Kg	Unit weight		Code No. ALF
				Kg	ALF	
30	21	8x25	75	0.02		30MS8
40	21	8x25	100	0.03		40MS8
50	21	10x38	250	0.04		50MS10

Available with above is a plastic insert threaded M10 I/D to suit 25x25 or 1"x1" square tube Ref S0719. Other stem sizes are available to order.

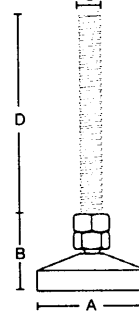


WHITE POLYPROPYLENE BASE WITH AN ALL STAINLESS STEM



Base diameter A	Height to stem B	Stem size Cx D	Static load Kg	Unit weight		Code No. ALF
				Kg	ALF	
50	42	10x75	250	0.10		50SS10x75
50	42	10x100	250	0.12		50SS10x100
80	55	12x150	400	0.22		80SS12
80	55	16x150	1000	0.37		80SS16
80	55	20x150	1200	0.53		80SS20
80	55	24x150	1200	0.78		80SS24
105	55	16x150	1000	0.44		105SS16
105	55	20x150	1200	0.60		105SS20
105	55	24x150	1200	0.75		105SS24

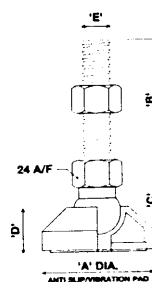
The above are white conical bases but there is available to order a black polypropylene bolt down base. Note the bolt down base is not always acceptable in the food industry as debris locates around the head of the bolt down bolt. For volume order special stem lengths can be manufactured. A mild steel stem is available to order.



BLACK NYLON 66 BASE WITH SYNTHETIC RUBBER ABSORPTION PAD (FOOD GRADE). Both zinc plated and stainless steel stems are shown



Base diameter A	Thread length B	Base height & socket C	Base height D	Stem diameter E	Material type	Static load Kg	Code No. ALF
60	65	51	25	M12	MS	800	60MS12
60	65	51	25	M16	MS	1000	60MS16
90	150	51	25	M12	MS	800	60MS16x150
90	65	51	25	M16	MS	1000	60SS12
60	65	51	25	M12	SS	800	60SS16
60	65	51	25	M16	SS	1000	90MS12
90	65	51	25	M12	SS	800	90MS16
90	150	51	25	M16	SS	1000	90MS16x150
60	65	51	25	M16	SS	1000	90SS12
90	65	51	25	M16	SS	1000	90SS16

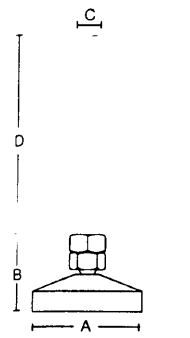
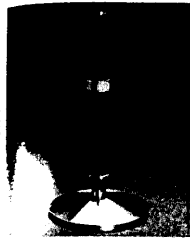




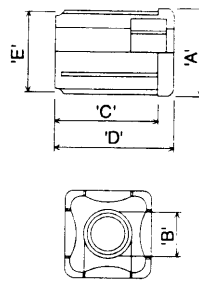
Stainless Steel Load Foot (Grade 304)

Threaded Insert For Square Box Section

SELF COLOUR STAINLESS STEEL BASE AND STEM



Base diameter	Height to stem	Stem size	Static load	Unit weight	Code No.
A	B	CxD	Kg	Kg	ALF
38	36	10x100	350	0.32	SS38SS10
51	45	12x150	500	0.77	SS51SS12
76	55	16x150	1500	1.13	SS76SS16
76	63	20x150	2000	1.20	SS76SS20
76	60	24x150	2000	1.35	SS76SS24

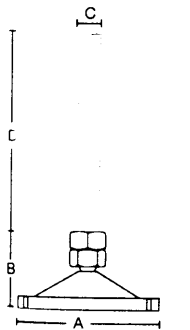


ALL NYLON INSERT					Code No.
A	B	C	D	E	ALF
25	M16	39	44	23.5	PL1NY
32	M16	39	44	30	PL11/4NY

NYLON INSERT MOULDED AROUND STAINLESS STEEL NUT					Code No.
38	M16	41	47	36	PL1/2NYSS
40	M10	35	43	37	PL40M10
40	M12	35	43	37	PL40M12
40	M16	35	43	37	PL40M16
40	M20	35	43	37	PL40M20
51	M16	38	45	48	2NYSS

The above threaded inserts are for use with all adjustable load feet providing the adjustable load foot has appropriate stem size. Please note maximum static capacity with all nylon inserts is 250Kg whichever type of adjustable load foot is used.

SELF COLOUR BOLT DOWN STAINLESS STEEL BASE AND STEM



Base diameter	Height to stem	Stem size	Static load	Unit weight	Code No.
A	B	CxD	Kg	Kg	ALF
102	55	16x150	1500	0.80	SSBD102SS16
102	63	20x150	2000	0.90	SSBD102SS20
102	60	24x150	2000	1.01	SSBD102SS24