



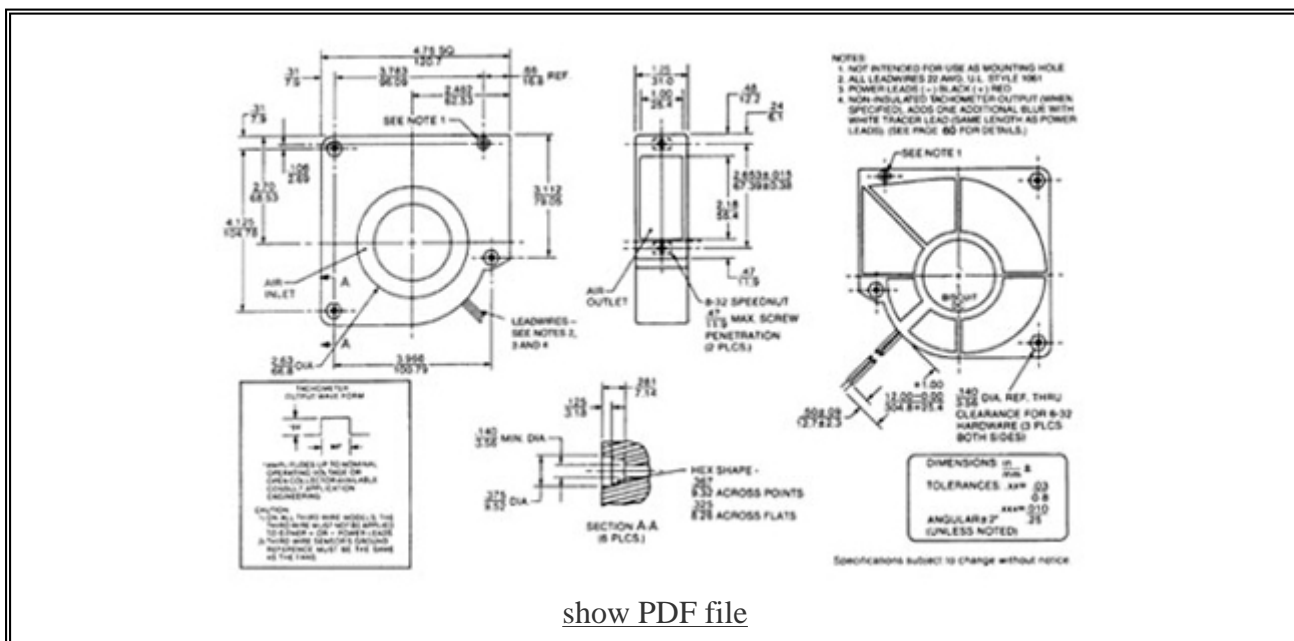
Biscuit DC (DC Blower)

COMAIR ROTRON PART NUMBER: **030621**
 COMAIR ROTRON MODEL NUMBER: **BD24B3**

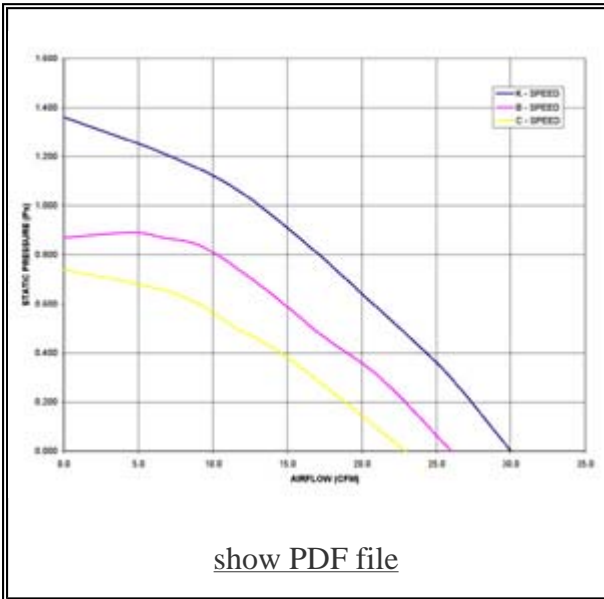


| | |
|------------------------------|---------|
| MOTOR | |
| Rated Voltage: | 24 |
| Operating Voltage Range: | 12 - 28 |
| Running Current: (amps) | 0.48 |
| Locked Rotor Current: (amps) | 0.95 |
| Rated Power: (watts) | 11.5 |
| Nominal Speed: (rpm) | 3100 |

| | |
|---------------|------------------------------------|
| MECHANICAL | |
| Dimensions: | 120.7mm x 31.0mm (4.75in x 1.22in) |
| Bearing Type: | Ball |
| Motor Base: | Lexan 500, Black, UL94V-0 |
| Propeller: | Polypropylene, Black, UL94V-0 |







| |
|-------|
| NOTES |
|-------|



| PERFORMANCE CHARACTERISTICS | |
|-----------------------------|------|
| Air Flow: (CFM) | 26 |
| Static Pressure: | .870 |

| TERMINATION | |
|-------------|---------------|
| Leadwires: | 12" Leadwires |

| SAFETY | |
|---|---|
|  |  |
|  |  |
| TYPE APPROVED | |

All product names are used under license and are trademarks or registered trademarks of Comair Rotron, Inc.

[New Search](#)

