

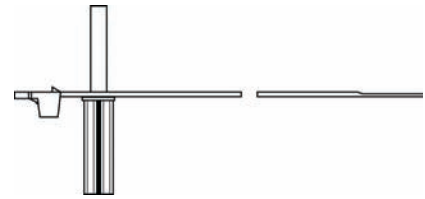
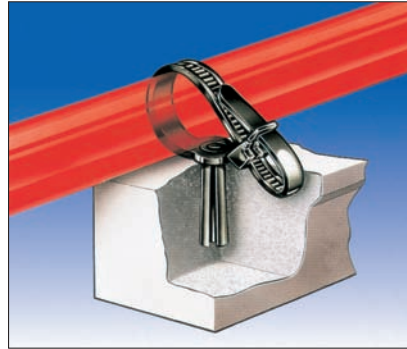
WPT ties

Features and Benefits

One piece fixing and cable tie can be fixed to brick, cement or wood. This product is often used in the construction industry and is both time saving and versatile.

Application

Simply drill an 8mm hole and knock in the peg. Used to fasten cables, pipes or hoses in place.



WPT230

Wall plug tie in application.

Technical Table

Article-No.	Type	Length (L)	Width (W)	Bundle Ø max.	Min. Tensile Strength (N)	Hole Ø	Material	Colour	Application Tool
126-00020	WPT230	230	8	59	–	8.0	PA66HIR	Black (BK)	–

All Dimensions in mm. Subject to technical changes.

Material Data

RoHS	Material	Polyamide 6.6 High Impact Modified (PA66HIR)
	Operating Temperature	-40 °C to +80 °C Continuous, (+105 °C for 500 h)
	Flammability	UL94 HB

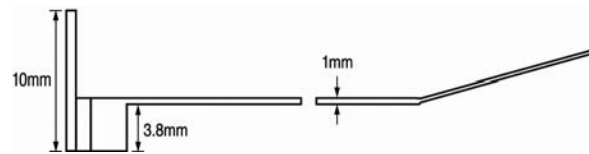
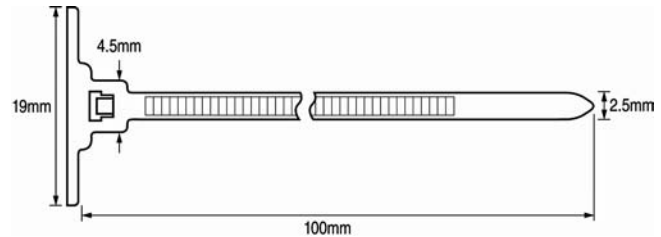
T18RSA Self Adhesive Cable Tie

Features and Benefits

This cable tie and integral self adhesive base ensures a firm securement of wiring bundles to a variety of materials. The T18RSA is both quick and easy to install.

Application

Ideal for use in a variety of clean applications.



T18RSA

Technical Table

Article-No.	Type	Length (L)	Width (W)	Bundle Ø max.	Min. Tensile Strength (N)	Material	Colour
148-00001	T18RSA	100.0	2.5	16.0	80	PA66	Natural (NA)

All Dimensions in mm. Subject to technical changes.

Material Data

RoHS	Material	Polyamide 6.6 (PA66)
	Operating Temperature	-40 °C to +85 °C Continuous, (+105 °C for 500 h)
	Flammability	UL94 V2



(halogenfree)