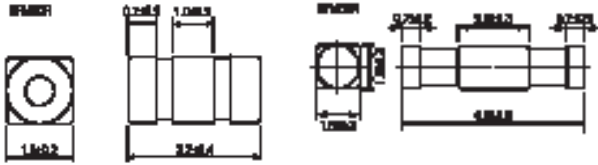
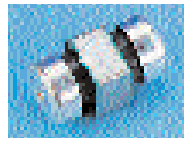


3 Terminal PCB Filters — continued

3 Terminal with Ferrite Beads.

T Circuit EMIFIL®



- 3 terminal surface mount capacitor with ferrite bead on input and output leads
- High current rating and low DC resistance make them suitable for suppression of DC power rails
- Flow or reflow solder except 869-909 which can only be reflow soldered

NFM60R Series

Voltage rating	25V dc	Current rating	6A dc
Insulation resistance	100MΩ	DC resistance	0.01Ω
Operating temperature	-40°C to +85°C	Reel quantity	2000 pcs

Capacitance pF	Tolerance	Mfrs. List No.	Order Code
22	±30%	NFM60R00T220T1	869-855†
47	+50 - 20%	NFM60R00T470T1	869-867†
100	+80 - 20%	NFM60R00T101T1	869-879
220	+50 - 20%	NFM60R00T221T1	869-880
470	+50 - 20%	NFM60R10T471T1	869-892
1500	+50 - 20%	NFM60R20T152T1	869-909
2200	±50%	NFM60R30T222T1	869-910

NFM61R Series

Voltage rating	50Vdc	Current rating	2A
Insulation resistance	1000MΩ	Reel quantity	2500 pcs
Operating temperature	-25°C to +85°C		

Capacitance pF	Tolerance	Mfrs. List No.	Order Code
100	±30%	NFM61R00T101T1	869-922
180	±30%	NFM61R00T181T1	869-934
360	±20%	NFM61R00T361T1	869-946
1000	+80 - 20%	NFM61R10T102T1	869-958
4700	+80 - 20%	NFM61R30T472T1	869-960

FIL196

Order Code	Order Multiple = 5		Price Each			
	5+	50+	100+	500+	1000+	2000+
NFM60R All Series Values						
NFM61R All Series Values						

† Available until stocks are exhausted

Contact Suppressors

RC Network – PCB Mounting

LCR Components



- PCB mounting contact arc suppressor which will suppress interference across switch and relay contacts when switching reactive loads.

H = 19, W = 25, D = 8
Lead pitch = 22.5, Lead dia. = 0.8, Lead length = 20

Power rating	0.5W @ 250V ac	Construction	C = 0.1µF class ±10%
Operating temperature	-55°C to +100°C		R = 100Ω ±10%

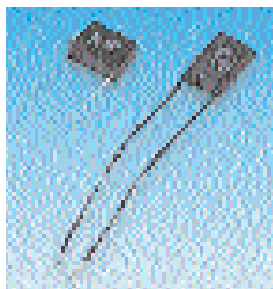
FIL110

Order Code	Price Each			
	1+	50+	100+	500+
453-810				

RC Network – PCB Mounting and Flying Leads

ROXBURGH

PCB mounting
H = 17.5
W = 23.5
D = 8.5
Lead pitch = 20
Lead dia. = 0.8
Lead length = 15.



Flying leads
H = 23
W = 19
D = 8.5
Lead pitch = 15
Lead dia. = 20 AWG
Lead length = 100.

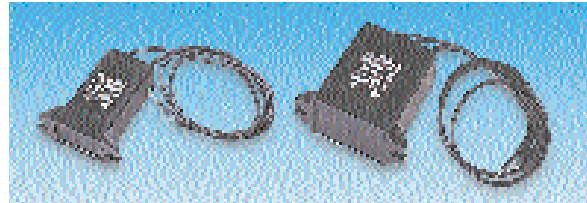
- RC Networks consisting of a capacitor in series with a high quality metal film resistor
- PCB mounting style or with flying leads
- Applications include suppression when switching reactive loads and as a snubber network in SCR and triac protection. Approved to VDE, SEMKO, DEMKO, NEMKO, UL and CSA.

Power rating	0.5W @ 250V ac	Operating temperature	-40°C to +85°C
Construction	C = 0.1µF Class X ±20%	Mfrs. List No.	XE1201 = 105-053 XEB1201 = 218-893
	R = 120Ω ±30%		FIL59

	Order Code	Price Each			
		1+	50+	100+	500+
PCB mounting	.105-053				
Flying leads	.218-893				

Spark Quenchers

ROXBURGH



Single phase
H = 57, W = 30, D = 20, FC = 40
Lead length = 300, Lead dia. = 20AWG

Three phase delta
H = 63, W = 45, D = 30, FC = 57
Lead length = 300, Lead dia. = 20AWG

- Single and three phase contact suppressors designed to reduce arcing when switching reactive loads
- RC networks feature a high overload capacity and are non-polarised, allowing use in both ac and dc circuits
- They offer a high degree of protection for semiconductor devices such as thyristors and solid state relays and will improve the dv/dt ratio.

Operating voltage	500V @ 50/60Hz
Construction	C = 0.33µF ±20% per phase R = 33Ω ±30% (@ 6W) per phase
Insulation resistance @ 500Vdc	10000MΩ
Peak pulse voltage (pk to pk)	1500V
Pulse width	100ms max
Repetitive frequency	720Hz max
Pulse width(s) frequency (Hz)	0.2 max
Operating temperature	-40°C to +70°C

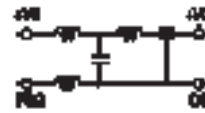
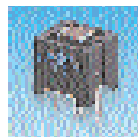
Mfrs. List No. CRH30330 = 230-273, 3CRH30330 = 230-285

FIL86

	Order Code	Price Each			
		1+	10+	50+	100+
Single phase	230-273				
Three phase delta	230-285				

DC Power Filters

Standard BNX Series



H = 13.0, W = 12.0, D = 11.0

VS = Voltage supply
VC = Voltage circuit
PSG = Power supply ground
CG = Circuit ground

- Compact PCB mounting dc power filters incorporating a large value four terminal capacitor, a feed-through capacitor and ferrite bead inductors
- Provides excellent attenuation over a very wide frequency band.
- Typical applications include the suppression of noise in digital equipment, engine control units, computer terminals and the output lines of switching power supplies.

Insulation resistance	100MΩ	Insertion Loss	40db min
Ratings (dc)		Dielectric	
Current (A)	Voltage (V)	Strength (V)	Insertion Loss
10	50	125	1 MHz - 1GHz
10	150	375	5 MHz - 1GHz
15	50	125	1 MHz - 1GHz

FIL35

Order Code	Price Each			
	1+	10+	25+	50+
.108-270				
579-555				
.248-435				