

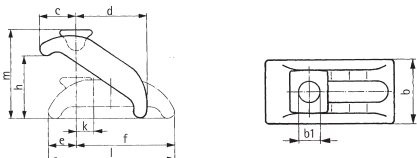
MAT95

Slot Size	Order Code	1+	3+	6+	12+
9	714-6577				
11	714-6589				
14	714-6590				
18	714-6607				

Stepless Adjustable Clamps



- Ideal for clamping varied workpieces, press tools etc
- Hardened steel, yellow passivated finish
- Clamping height can be increased by adding a packer under heel of clamp
- Supplied without T-bolt

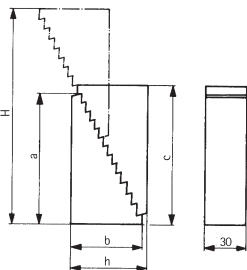
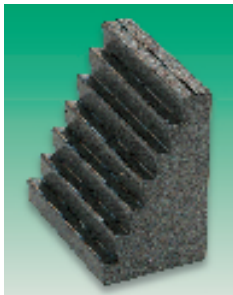


For Threads:	T Slot mm A/F	Clamping Height mm	Length b1	Width l	Width b	c	d	f	k	Order Code
M12	12 & 14	0-40	13	88	38	28	48	68	14	714-6620
M14, M16	16 & 18	0-65	18	130	56	38	74	101	18	714-6632

MAT99

For Threads:	Order Code	1+	3+	6+	12+
M12	714-6620				
M14, M16	714-6632				

Step Blocks



- Enamelled carbon steel universal step blocks
- Step increments : vertical 4.65mm, horizontal 2.3mm

Note: Sold individually, recommend buy in pairs

Height Max. (pair)	Height Min. (pair)	Height (a)	Length (b)	Width	Mftrs. List No.	Order Code
51	22	33	19	30	1400.W001	714-6759
107	39	66	35.5	30	1400.W002	714-6760
208	71	131	68	30	1400.W003	714-6772

MAT101

Max. Height (pair)	Order Code	1+	4+	8+	12+
51	714-6759				
107	714-6760				
208	714-6772				

Studs



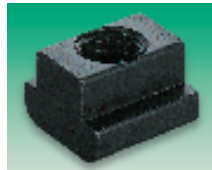
- Quality forged steel, rolled thread
- M8-M12 heat-treated to strength class 10.9
- M14-M18 heat-treated to strength class 8.8

Thread	Length l	b	b1	Mftrs. List No.	Order Code
M8	63	40	11	2110.W082	714-6929
M8	100	63	11	2110.W084	714-6930
M10	100	75	13	2110.W103	714-6942
M10	160	100	13	2110.W105	714-6954
M12	100	63	15	2110.W125	714-6966
M12	160	100	15	2110.W126	714-6978
M14	160	100	17	2110.W143	714-6980
M14	200	125	17	2110.W144	714-6991
M16	125	75	19	2110.W164	714-7004
M16	200	125	19	2110.W166	714-7016

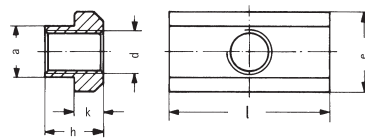
MAT104

Thread	Order Code	1+	3+	6+	12+
M8	714-6929				
M8	714-6930				
M10	714-6942				
M10	714-6954				
M12	714-6966				
M12	714-6978				
M14	714-6980				
M14	714-6991				
M16	714-7004				
M16	714-7016				

T Nut



- Heat-treated to tensile strength class 10



T slot size A/F	Thread d mm	a	e	h	k	Mftrs. List No.	Order Code
10	M8	9.7	15	12	6	2400.W101	714-7193
12	M10	11.7	18	14	7	2400.W122	714-7200
14	M12	13.7	22	16	8	2400.W143	714-7211
16	M14	15.7	25	18	9	2400.W164	714-7223
18	M16	17.7	28	20	10	2400.W185	714-7235

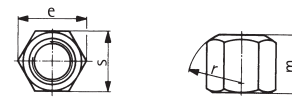
MAT106

T slot size A/F - min	Order Code	1+	3+	6+	12+
10	714-7193				
12	714-7200				
14	714-7211				
16	714-7223				
18	714-7235				

Fixture Nuts



- Heat-treated to tensile strength class 10
- Supplied in pairs

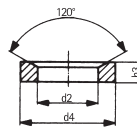


Thread	A/F s	e	Height	r	Mftrs. List No.	Order Code
M8	13	15.0	12	12	2430.W108	714-7259
M10	16	19.6	15	15	2430.W110	714-7260
M12	18	21.9	18	17	2430.W112	714-7272
M14	21	25.4	21	20	2430.W114	714-7284
M16	24	27.7	24	22	2430.W116	714-7296

MAT107

Thread mm	Order Code	1+	3+	6+	12+
M8	714-7259				
M10	714-7260				
M12	714-7272				
M14	714-7284				
M16	714-7296				

Dished Washer



- Punched and tempered
- Suitable to bridge the slots of clamps, etc
- Supplied in pairs

For Threads	d2	∅	Height	Mftrs. List No.	Order Code
M8	9.6	23	4	2570.W108	714-7314
M10	12.0	28	5	2570.W110	714-7326
M12	14.2	35	5	2570.W112	714-7338
M14	16.5	40	5	2570.W114	714-7340
M16	19.0	45	6	2570.W116	714-7351

MAT108

Thread	Order Code	1+	3+	6+	12+
M8	714-7314				
M10	714-7326				
M12	714-7338				
M14	714-7340				
M16	714-7351				

continued