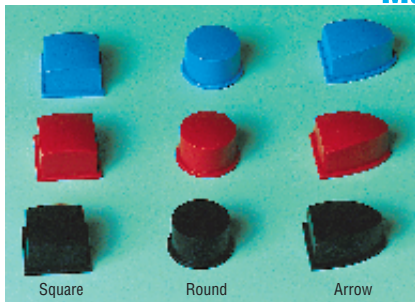


## Keyboard Switches and Accessories — continued

### Softline Style Caps

Multimec®



- Softline styled caps with curved top for aesthetic and ergonomic appeal with square, round and arrow options

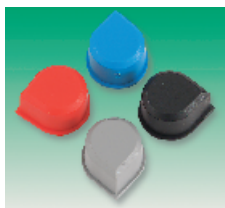
Square Caps: Blue = 311-2329, Grey = 311-2354, Red = 311-2342, Black = 311-2354,  
 Round Caps: Blue = 311-2366, Grey = 311-2378, Red = 311-2380, Black = 311-2391  
 Arrow Caps: Blue = 311-2408, Grey = 311-2410, Red = 311-2421, Black = 311-2433

SW193

All Order Codes	Price Each			
	10+	50+	100+	500+

### Teardrop Caps

Multimec®



- Teardrop caps to point
- 8 directions possible

New

Mftrs. List No.	Colour	Order Code
1N00	Blue	350-7178
1N03	Grey	350-7180
1N08	Red	350-7191
1N09	Black	350-7208

SW400

Mftrs. List No.	Colour	Order Code	Price Each			
			10+	50+	100+	500+
1N00	Blue	350-7178				
1N03	Grey	350-7180				
1N08	Red	350-7191				
1N09	Black	350-7208				

### Extended Height Caps

Multimec®



- For use with '3F' Series switches
- Black caps offer overall height of 16, 19 or 22.5mm.
- Extender section gives additional 10mm height.

SW18

Order Multiple=10	Mftrs. List No.	Order Code	Price Each			
			10+	50+	100+	500+
16mm Cap	1S09-16	917-450				
19mm Cap	1S09-19	917-461				
22.5mm Cap	1S09-225	917-473				
10mm Extender	2S09	917-485				

### Illuminated with Caps and Bezels

Multimec®



678-065, 678-119, 678-030, 678-041,  
 674-941, 678-089, 678-090

Dimensions as non-illuminated types (above)

- Switches incorporate either red or green, blue or bicolour red/green LED's for illumination
- Caps have clear lenses within the coloured moulding and can therefore be used with either colour LED
- Round or rectangular caps available in black or grey
- Transparent square cap is supplied with diffuser. Custom legends may be placed between cap and diffuser
- Bezels are available and recommended for use with square caps
- Extended height versions offer 16, 19 or 22.5mm overall height

SW259

Order Multiple=1	Mftrs. List No.	Order Code	Price Each			
			1+	50+	100+	500+
<b>Switch Body with LED</b>						
Green LED	3FTL620	678-030				
Red LED	3FTL680	678-041				
Blue LED	3FTL600	311-3759				
Red/Green LED	3FTL68020	311-3760				
H.I. Green LED	3FTL622	678-053				
H.I. Red LED	3FTL688	678-065				
<b>Caps with Clear Lens</b>						
Square, with diffuser	1K1116	678-119				
<b>Order Multiple=10</b>						
<b>Caps with Clear Lens</b>						
Round black	1E091	678-077	10+	50+	100+	500+
Round grey	1E031	678-089				
Rectangular black	1Q091	678-090				
Rectangular grey	1Q0T31	678-107				
<b>Extended Height Caps with Clear Lens - Round</b>						
16mm	1S11-16	311-2445				
19mm	1S11-19	311-2457				
22.5mm	1S11-22.5	311-2469				
10mm Extender	2S09	917-485				

### Rocker Style Pushbuttons

Multimec®



311-2196 + 311-2202    311-2184 + 311-2240 + 311-2263    311-2184 + 311-2251 + 311-2317

- Flat button switch with unique hinged rocker style caps
- Switch available in throughhole or surface mount
- Caps with or without bezels should be ordered separately
- Bezel option with clear lens for opto applications, LED should be ordered separately

SW188

Order Multiple=10	Mftrs. List No.	Order Code	Price Each			
			1+	50+	100+	500+
<b>Switch Body</b>						
PCB	3ATL6	311-2184				
Surface mount	3ASH9	311-2196				
<b>Keycaps - Rectangular</b>						
Red	1A08	311-2202	10+	50+	100+	500+
Black	1A09	311-2214				
Grey	1A03	311-2226				
<b>Keycaps Rectangular - Requiring 2A bezel</b>						
Red	1B08	311-2238				
Black	1B09	311-2240				
Grey	1B03	311-2251				
<b>Plain Bezels - To fit 1B caps</b>						
Red	2A08	311-2263				
Black	2A09	311-2275				
Grey	2A03	311-2287				
<b>Bezels With Clear Lens</b>						
Red	2B081	311-2299				
Black	2B091	311-2305				
Grey	2B031	311-2317				

### Non-Illuminated, Low Profile3

CHERRY®



Low profile module and keycap

- SPNO momentary keyboard switches for PCB mounting
- Gold crosspoint contacts, keypads are ochre coloured

SW94

Order Code	Price Each		
	1+	25+	100+
Low profile switch module	.170-770		
Keypad for 170-770	.175-518		