

## Analogue Signal Conditioners — continued

### Isolating Signal Converters DC/AC Powered



- Full 3 port isolation
- Ultra compact DIN rail enclosures
- High accuracy, low cost solutions
- Single and dual output versions
- 4-20mA and 0-10V inputs
- 4-20mA and 0-10V outputs

H = 75, W = 22.5, D = 104.5

Supply Voltage	No. Inputs	No. Outputs	Input Type	Output Type	Mfrs. List No.	Order Code
24Vdc	1	1	4-20mA	4-20mA	VCONHL-AA-XX-6	309-2604
24Vdc	1	1	0-10V	0-10V	VCONHL-GG-XX-6	309-2616
230Vac	1	1	4-20mA	4-20mA	MVCONHL-AA-XX-2	309-2628
230Vac	1	1	4-20mA	0-10V	MVCONHL-AG-XX-2	309-2630
24Vdc	1	2	4-20mA	2 4-20mA	DUALCON-AA-XA-6	309-2641
24Vdc	1	2	0-10V	2 0-10V	DUALCON-GG-XG-6	309-2653
24Vdc	2	2	2 4-20mA	2 4-20mA	TWINCON-AA-AA-6	309-2665
24Vdc	2	2	2 0-10V	2 0-10V	TWINCON-GG-GG-6	309-2677

PLC191

Supply	Input	Output	Order Code	Price Each			
				1+	5+	10+	25+
24Vdc	4-20mA	4-20mA	<b>309-2604</b>				
24Vdc	0-10V	0-10V	<b>309-2616</b>				
230Vac	4-20mA	4-20mA	<b>309-2628</b>				
230Vac	4-20mA	0-10V	<b>309-2630</b>				
24Vdc	4-20mA	2 4-20mA	<b>309-2641</b>				
24Vdc	0-10V	2 0-10V	<b>309-2653</b>				
24Vdc	2 4-20mA	2 4-20mA	<b>309-2665</b>				
24Vdc	2 0-10V	2 0-10V	<b>309-2677</b>				

### Intelligent Transmitters



- Fully configurable using DOS software
- 3 port isolation
- Very high accuracy
- Low cost solution
- Alarm relay facility
- RS232 and RS485 MODBUS comms links
- Ultra compact
- User defined inputs include all common process sensor types
- User defined outputs give all standard voltage and current options

H = 75, W = 22.5, D = 104.5

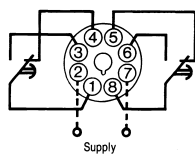
Supply Voltage	Inputs	Outputs	Mfrs. List No.	Order Code
24Vdc	User defined	User defined	UNICON-JJ-XX-6	309-2689
24Vdc	Frequency to 1MHz	User defined	FREQCON-JJ-XX-6	309-2690
24Vdc	2 User defined	Maths function of inputs	MATHSCON-JJJ-X-6	309-2707
RS232	Programming	Kit	RS232LEAD	309-2719
RS485	Programming	Kit	RS485LEAD	309-2720

PLC188

	Order Code	Price Each			
		1+	5+	10+	25+
Universal Converter	<b>309-2689</b>				
Frequency Converter	<b>309-2690</b>				
Maths Unit	<b>309-2707</b>				
RS232 Kit	<b>309-2719</b>				
RS485 Kit	<b>309-2720</b>				

## Electronic Timers

### 36 DIN – On Delay-TOP 36



H = 36, W = 36,  
D = 74 (behind bezel)  
Panel cut-out = 33 sq

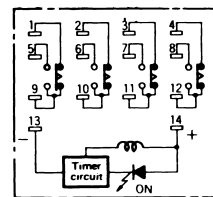
- Miniature delay on energisation timers
- DPCO relay output and LED indication for power ON
- May be panel mounted with connection by standard 8-pin socket
- Supplied with mounting clip

Operating mode	Delay on energisation	Operating voltage ranges
Time ranges	See ordering information	24V ac 20.4-27.6V 50/60Hz
Repeat accuracy	±1% (constant parameters)	24V dc 20.4-27.6V dc
Variation over temp. range	±4%	110V ac 85-138V 50/60Hz
Reset time	0.1s max.	240V ac 170-264V 50/60Hz
Contact arrangement	DPCO	Operating temp. -10°C to +60°C
Contact rating	5A @ 250V ac/30V dc	Mfrs. List No. 88 888 series

68

Time Range	Order Codes			Price Each			
	24V ac/dc	110V ac	240V ac	1+	5+	10+	25+
<b>Timers</b>							
0.05s to 5s	<b>.213-482</b>	<b>.213-494</b>	<b>.213-500</b>				
0.6s to 60s	<b>.213-512</b>	<b>.213-524</b>	<b>.213-536</b>				
3s to 300s	<b>.213-548</b>	<b>.213-550</b>	<b>.213-561</b>				
0.3m to 30m	<b>.213-573</b>	<b>.213-585</b>	<b>.213-597</b>				
<b>Sockets</b>				1+	25+	50+	100+
DIN rail/Surface							
Free, solder (with cover)					<b>.177-176.</b>		<b>.170-962.</b>

### Miniature 4-Pole Changeover – H3Y4



H = 56.6,  
W = 20.7,  
D = 27.2

- Miniature adjustable timer compatible with Omron LY and MY relays
- Connection by 14 pin socket
- Panel adaptor available for panel mounting

Operating mode	Delay on energisation	Output time contacts	4PCO
Time ranges	See ordering information	Contact rating	3A @ 250V ac
Repeat accuracy	±2% max.	Operating voltage	See ordering information
Reset time	0.1s max.	Operating voltage range	80-110%

Time Range	Order Codes				
	24V ac	100-120V ac	200-230V ac	12V dc	24V dc
0.1-1s	<b>104-650</b>	<b>104-656</b>	<b>104-662</b>	—	<b>104-674</b>
0.2-5s	<b>104-031</b>	<b>104-041</b>	<b>104-046</b>	<b>104-026</b>	<b>104-036</b>
0.5-10s	<b>104-032</b>	<b>104-042</b>	<b>104-047</b>	<b>104-027</b>	<b>104-037</b>
1-30s	<b>104-033</b>	<b>104-043</b>	<b>104-048</b>	<b>104-028</b>	<b>104-038</b>
2-60s	<b>104-034</b>	<b>104-044</b>	<b>104-049</b>	<b>104-029</b>	<b>104-039</b>
0.1-3m	—	<b>104-045</b>	<b>104-050</b>	<b>104-030</b>	<b>104-040</b>
0.2-5m	—	<b>104-657</b>	<b>104-663</b>	<b>104-669</b>	<b>104-675</b>
0.5-10m	<b>104-652</b>	<b>104-658</b>	<b>104-664</b>	<b>104-670</b>	<b>104-676</b>
1-30m	<b>104-653</b>	—	<b>104-665</b>	<b>104-671</b>	<b>104-677</b>
2-60m	—	—	<b>104-666</b>	—	<b>104-678</b>
0.1-3hr	—	—	<b>104-667</b>	—	<b>104-679</b>

Mfrs. List No.:— PYF14A-E = 176-963, Y92H-4 = 424-651, PY14 = 427-342, PY140 = 427-354

3

Voltage	Timers	Order Code	Price Each			
			1+	5+	10+	25+
24/100-120/200-230V ac		<b>.All Order Codes</b>				
12/24V dc		<b>.All Order Codes</b>				
<b>Sockets</b>			1+	20+	100+	
Chassis		<b>427-342.</b>				
PCB		<b>427-354.</b>				
Surface/DIN rail		<b>.176-963.</b>				
<b>Retaining Clips</b>						
Chassis/PCB		<b>424-651</b>				
Surface/DIN rail		<b>.103-924</b>				
Panel Adaptor		<b>NEW 326-3046</b>	1+	5+	10+	

### Solid-State Timer - H3Y Series



- UL and CSA approved
- LED indication for power and output status
- IP40 rated



Body: W = 28, H = 21.5, D = 52.6  
(excluding the bezel)

Operating mode	Time-limit operation/self-reset	Control output	5A at 250Vac, resistive load (cosΦ = 1)
Reset time	0.1s max.	Operating temp.	-10°C to +50°C
Reset voltage	10% max of rated supply voltage	Life expectancy	Mechanical: 10,000,000 op. min. Electrical: 500,000 op. min.
Contact	DPDT		