

**Ball Valves — continued**

**Full-Bore Ball Valves**



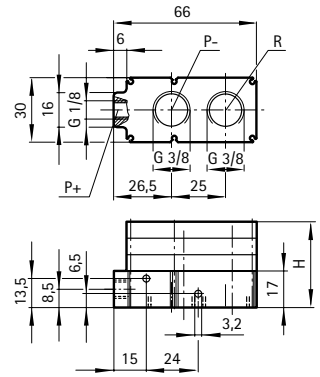
60 Series: Standard Full Bore (Female) Ball Valve

pne134

Female BSP	Max. Working Pressure Bar	Mftrs. List No.	Order Code	1+	4+	10+	20+
G¼	45	602112128	<b>702-1501</b>				
G½	40	602112138	<b>702-1513</b>				
G¾	35	602112148	<b>702-1525</b>				
G1	30	602112168	<b>702-1537</b>				
G1¼	25	602112188	<b>702-1549</b>				
G1½	20	6021121A8	<b>702-1550</b>				
G2	20	6021121B8	<b>702-1562</b>				
G3	16	6021121C8	<b>702-1574</b>				
G4	10	6021121E8	<b>702-1586</b>				
G4	10	6021121F8	<b>702-1598</b>				

- Fast response
- Compact and lightweight
- Low sound level
- Compressed air driven
- Simple installation

Medium Compressed air, filtered and non-lubricated  
 Operation Multi-ejector system  
 Operating Pressure 6 bar maximum  
 Vacuum -0,87 bar maximum  
 Operating Temperature +80°C  
 Sound Level 75 to 80 dB(A)



Type	Induced Air (NI/Min)	Air Consumption (NI/Min)	Time to evacuate 1 litre volume to vacuum (secs)				
			-0,2 bar	-0,4 bar	0,6 bar	-0,8 bar	0,85 bar
M/58102/10	80	49	0,2s	0,75s	1,73s	4,13s	5,82s
M/58102/20	160	98	0,1s	0,37s	0,86s	2,047s	2,92s
M/58102/30	240	144	0,07s	0,25s	0,58s	1,38s	1,94s

NOT SOLD WITH VACUUM GAUGE, PLEASE ORDER SEPARATELY SEE PAGE 1146

pne189

Mftrs. List No.	Order Code	1+	4+	10+	20+	50+
M/58102/10	<b>704-8907</b>					
M/58102/20	<b>704-8919</b>					
M/58102/30	<b>704-8920</b>					

**Accessories**

**Blow Guns**



Blow Gun

- Ergonomic design
- Infinitely variable air flow
- Easy grip lever
- Durable light-weight construction
- Good insulation properties

Safety: For non-regulated blow guns, the air supply line should be fitted with a regulator set at **2 Bar (30 PSI)**.

Description	Nozzle Length mm	Overall Length mm	Inlet Thread	Max. Working Pressure	Mftrs. List No.
Standard Blow Gun	90	240	1/4"	16 bar	11 205 0100
Low Noise Gun (Max. 79dB (A))	90	240	1/4"	16 bar	11 205 3100
Max. Pressure 2 Bar Blow Gun	90	240	1/4"	16 bar	11 205 1100

pne318

	Mftrs. List No.	Order Code	1+	5+	10+
Standard Blow Gun	11 205 0100	<b>706-9170</b>			
Low Noise Gun	11 205 3100	<b>706-9182</b>			
2 Bar Blow Gun	11 205 1100	<b>706-9194</b>			

**Vacuum Generator**



- Easy installation
  - Low noise level
- Operating Pressure 5 bar optimum  
 8 bar optimum  
 Vacuum -0,85 bar maximum  
 Operating Temperature +150°C  
 Sound Level 66/74 dB vacuum port closed/open

pne534

Mftrs. List No.	Order Code	1+	4+	10+	20+
M/58112/09	<b>721-4224</b>				

**Gauges**



Vacuum Gauge

- Range 0 to -1 bar

pne464

Thread	Mftrs. List No.	Order Code	1+	4+	10+	20+	50+
¼	M/58080	<b>715-2644</b>					

**Vacuum Pumps**

**Vacuum Generators**



Vacuum Generators



**Accessories**

**Pneumatic Sensor Fitting**



- Allow up to 30° movement between the suction cup and cup mounting
- G¾" and G½" male/female threads
- Improve suction of uneven or curved surfaces

Flexible Connectors for Suction Cups

pne194

Size	Mftrs. List No.	Order Code	1+	4+	10+	20+
G¾	M/58001	<b>704-9110</b>				
G½	M/58002	<b>704-9122</b>				