

Bore	12	16	20	25	32	40	50	63	80	100
∅										
AF	6	7	8	9	12	12	14	16	22	22
BG	9	9	9	12	12	16	16	20	20	25
C	-	21	25	29.5	38	46.5	56.5	71	89	110
∅D	32.5	36.5	41.5	48	58	71.5	81	104	120	148.5
EE	M5	M5	M5	M5	G1/8	G1/8	G1/8	G1/4	G1/4	
∅FB	3.3	3.3	3.3	4.2	4.2	6.8	6.8	8.5	8.5	10.2
FF	10	10	10	10	18	18	18	22	22	22
GB	3.5	3.5	3.5	4.5	4.5	6.5	6.5	8.5	8.5	10.5
HF	-	6	8	8	10	10	12	12	16	20
∅JB	6	6	6	7.5	7.5	10.5	10.5	13.5	13.5	16.5
KF	M3	M4	M5	M6	M8	M8	M10	M12	M16	M16
∅MM	6	8	10	12	16	20	20	25	25	
MX	5	6	8	10	13	13	17	17	22	22
PF	15	17	19.5	22	27.5	31.5	37	48	57	67
PL	7	7.5	7.5	8	9	10	10.5	13	14.5	16
RT	M4	M4	M4	M5	M5	M8	M8	M10	M10	M12
TG1	17	20	23	27	33	41	48	61	73	90.5
TG2	13	20	23	27	33	41	48	61	73	90.5
TT	-	M4	M4	M5	M5	M8	M8	M10	M10	M12
WH	4.5	5.5	6	6.5	6.5	6.5	8	8	9	10
ZH+Stroke	24	24.5	26	28.5	29	31.5	35	42.5	47	48.5
ZJ+Stroke	28.5	30	32	35	35.5	38	43	50.5	56	58.5

All Dimensions in mm

Medium Compressed air, filtered, lubricated or non-lubricated
 Pressure 1 to 10 bar
 Temperature -5° C to +80° C
 Piston Rod Stainless Steel
 Spring and Circlips Stainless Steel
 Barrel Aluminium
 Ports 12, 16, 20, 25mm bore M5 thread
 Ports 32, 40, 50mm bore G1/8" thread
 Ports 63, 80, 100mm bore G1/4" thread

pne21

Bore	Stroke	Mfrs. List No.	Order Code	1+	Price Each	4+	10+	20+
12	5	RM/92012/M/5	706-4111					
12	10	RM/92012/M/10	706-4123					
16	15	RM/92016/M/15	706-4135					
16	20	RM/92016/M/20	706-4147					
20	15	RM/92020/M/15	706-4159					
20	25	RM/92020/M/25	706-4160					
25	15	RM/92025/M/15	700-3158					
25	25	RM/92025/M/25	700-3160					
32	15	RM/92032/M/15	700-3171					
32	25	RM/92032/M/25	700-3183					
40	15	RM/92040/M/15	700-3195					
40	25	RM/92040/M/25	700-3201					
50	25	RM/92050/M/25	700-3213					
50	50	RM/92050/M/50	700-3225					
63	25	RM/92063/M/25	706-4172					
63	50	RM/92063/M/50	706-4184					
80	50	RM/92080/M/50	706-4196					
80	100	RM/92080/M/100	706-4202					
100	50	RM/92100/M/50	706-4214					
100	100	RM/92100/M/100	706-4226					

For none standard stroke length cylinders, please contact Value Added Services on 0113 279 9589.

Compact Cylinder Magnetic Switch



- Magnetic compact cylinder switch
- IP66 rating

A reed switch designed to fit the range of Norgren compact cylinders.

Supplied complete with fixing screw, LED and 2m cable with an IP66 rating.

Type	Voltage	Max. Current	Temperature	Function	LED	Cable Length
M/40	110 ac / 100 dc	180 mA	0° C to +70° C	N/O	Yes	2 m

pne22

Type	Mfrs. List No.	Order Code	1+	Price Each	4+	10+	20+
Magnetic Switch	M/40	700-3419					

Mounting Accessories



- Converts the standard female thread on the Norgren compact cylinder, into a male thread
- The adaptor used on the 50mm + bores comes complete with an integrated nut
- Use the cylinder bore to select

pne26

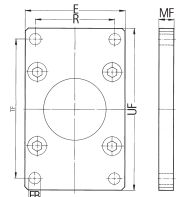
To suit cylinder bore

bore (mm)	Type	Mfrs. List No.	Order Code	1+	Price Each	4+	10+	20+
12	Stud	M/P1710/18	706-4998					
16	Stud	M/P1710/19	706-5000					
20	Stud	M/P1710/20	706-5012					
25	Stud	M/P1710/21	700-3821					
32, 40	Stud	M/P1710/22	700-3833					
12	Lock Nut	M/P1500/11	706-5024					
16	Lock Nut	M/P1501/80	700-0595					
20	Lock Nut	M/P1501/109	706-5048					
25	Lock Nut	M/P1501/79	700-0601					
32, 40	Lock Nut	M/P1501/60	700-0613					
50	Adaptor	M/P71470/1	700-3869					
63	Adaptor	M/P71470/2	706-5050					
80, 100	Adaptor	M/P71470/3	706-5061					

Compact Cylinder Flange Mounting



Compact Cylinder Flange Mount



Front & Rear Flange

- Secure front and rear mounting of compact cylinders
- Supplied with cylinder mounting screws

A front and rear flange mounting designed for use with Norgren Compact cylinders to give a secure fixing.

Use the cylinder bore to select the correct unit. Flanges are supplied with mounting bolts which screw into the ends of the cylinder via the pre-threaded mounting holes.

Bore	12	16	20	25	32	40	50	63	80	100
E	26	30	33	38	46	57	64	81	95	118
R	18	30	25	28	36	43	50	63	77	98
∅FB	3.5	3.5	3.5	4.5	4.5	6.5	6.5	9.5	8.5	11
MF	5	5	5	6.5	6.5	9.5	9.5	12.5	12.5	12.5
TF	38	42	48	54	66	78	90	110	128	156
UF	46	50	56	64	76	92	104	128	146	176

pne23

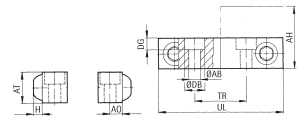
To suit cylinder bore

bore (mm)	Mfrs. List No.	Order Code	1+	Price Each	4+	10+	20+	50+
12	QM/90012/22	706-4494						
16	QM/90016/22	706-4500						
20	QM/90020/22	706-4512						
25	QM/90025/22	700-3500						
32	QM/90032/22	700-3511						
40	QM/90040/22	700-3523						
50	QM/90050/22	700-3535						
63	QM/90063/22	706-4524						
80	QM/90080/22	706-4536						
100	QM/900100/22	706-4548						

Compact Cylinder Foot Mounting



Compact Cylinder Foot Mount



- Foot mountings for use with Norgren compact cylinders
- Sold in pairs complete with mounting bolts
- Use the cylinder bore to select the correct unit

Bore	12	16	20	25	32	40	50	63	80	100
H	2	2	2	3	3	4.5	4.5	5.5	5.5	6.5
AB	3.4	3.4	3.4	4.3	4.3	6.4	6.4	8.4	8.4	10.5
AH	13.5	15	16.5	20	23	28.5	32	41.5	49	59.5
A0	4	4	4	5	5	6.5	6.5	8	8	9
AT	9.5	9.5	9.5	12.5	12.5	12.5	16	22	25.5	28.5
DB	6	6	6	7.5	7.5	10.5	10.5	13.5	13.5	13.5
DG	3.5	3.5	3.5	4.5	4.5	6.5	6.5	8.5	8.5	10.5
TR	25	32	35	41	19	21	27	34	44	56
UL	33	40	43	51	46	56	64	81	95	118

pne24

To suit cylinder bore

bore (mm)	Mfrs. List No.	Order Code	1+	Price Each	4+	10+	20+
12	QM/90012/21	706-4603					
16	QM/90016/21	706-4615					
20	QM/90020/21	706-4627					
25	QM/90025/21	700-3559					
32	QM/90032/21	700-3560					
40	QM/90040/21	700-3572					
50	QM/90050/21	700-3584					
63	QM/90063/21	706-4639					
80	QM/90080/21	706-4640					
100	QM/90100/21	706-4652					