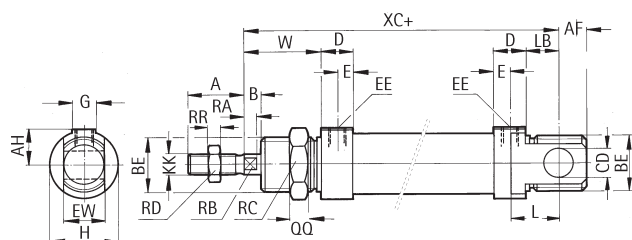


ISO Cylinders

Double Acting Magnetic 10mm to 25mm Bore



Double Acting ISO Cylinders



- Conforms to **ISO 6432**
- Magnetic piston models
- Buffer cushioning
- Corrosion-resistant construction
- Threaded rear end covers incorporate an integral eye mounting
- Supplied complete with nose mounting nut and piston rod locknut

Bore \varnothing	10	12	16	20	25
Piston Rod \varnothing	4	6	8	10	12
A	12	16	16	20	22
B	4	5	5	4	6
D	9	10	9.5	15	15
E	3.5	4	4	7	7
G	9.5	9.5	9.5	14.5	14.5
H	15	20	20	27	27
L	6	9	9	12	12
W	16	22	22	24	28
AF	10	14	13	17	15
AH	7.5	10	10	13.5	13.5
BE	M12 1.25	M16 1.5	M16 1.5	M22 1.5	M22 1.5
CD	4	6	6	8	8
EE	M5	M5	M5	G1/8	G1/8
EW	8	12	12	16	16
KK	M4	M6	M6	M8	M10 1.25
LB	2	3	4	3	7
RA	—	3	3	3	4
RB	—	5	5	7	9
RC	19	22	22	27	27
RD	7	10	10	13	17
RR	2	3	3	4	5
QQ	6	5	5	8	8
XC	64	75	82	95	104

All Dimensions in mm

Medium	Compressed air, filtered, lubricated and non lubricated
Pressure	1-10 Bar
Temperature	-10°C to + 80°C
Piston Rod	Stainless Steel
Barrel	Stainless Steel
End covers	Anodised aluminium
Ports 10, 12, 16mm \varnothing bore	M5 thread
Ports 20 and 25 \varnothing bore	G1/8 thread

pne3

Bore (mm)	Stroke (mm)	Mfrs. List No.	Order Code	1+	4+	10+	20+
10	25	RM/8010/M/25	700-0194				
10	80	RM/8010/M/80	700-0200				
12	50	RM/8012/M/50	700-0212				
12	100	RM/8012/M/100	700-0224				
16	50	RM/8016/M/50	700-0236				
16	80	RM/8016/M/80	700-0248				
20	80	RM/8020/M/80	700-0250				
20	100	RM/8020/M/100	700-0261				
25	25	RM/8025/M/25	700-0273				
25	50	RM/8025/M/50	700-0285				
25	80	RM/8025/M/80	700-0297				
25	100	RM/8025/M/100	700-0303				

For none standard stroke length cylinders, please ring Value Added Services on 0113 279 9589

ISO Cylinder Mountings



Universal Piston Rod Eye



Piston Rod Clevis



Piston Rod Swivel



Rear Hinge



Flange Mount

- Easy mounting of ISO cylinders

Select the correct mounting using the bore of the cylinder

pne5

Type	For Bore (mm)	Mfrs. List No.	Order Code	1+	Price Each	4+	10+	20+
Piston Rod Swivel	10	QM/8010/38	700-0364					
	12.16	QM/8012/38	700-0376					
	20	QM/8020/38	700-0388					
	25	QM/8025/38	700-0390					
Rear Flange	10	M/P19407	700-0406					
	12.16	M/P19408	700-0418					
	20.25	M/P19409	700-0420					
Foot Mounting	10	M/P19369	700-0431					
	12.16	M/P19389	700-0443					
	20.25	M/P19406	700-0455					
Piston Rod Clevis	10	QM/8010/25	700-0467					
	12.16	QM/8012/25	700-0479					
	20.25	QM/8020/25	700-0480					
Rear Hinge	10	QM/947	700-0522					
	12.16	QM/8012/24	700-0534					
	20.25	QM/8020/24	700-0546					
Universal Piston Rod Eye	10	QM/8010/32	700-0558					
	12.16	QM/8012/32	700-0560					
	20	QM/8020/32	700-0571					
	25	QM/8025/32	700-0583					
Piston Rod Lock Nut	10	M/P1501/80	700-0595					
	12.16	M/P1501/79	700-0601					
	20	M/P1501/60	700-0613					
	25	M/P1501/89	700-0625					

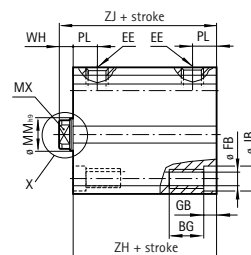
Compact Cylinders

Compact Cylinders

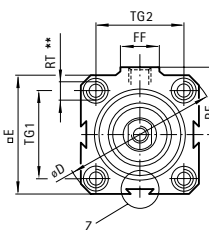


Compact Cylinders
Double-Acting 12mm to 100mm bore

- Very compact - approximately one third the basic length of a corresponding ISO model
- Non-corrodible materials throughout
- Magnetic piston as standard (use sensor 700-3419 over page)
- Ideal problem solving cylinder range
- Synthetic rubber buffers reduce end of stroke shock
- Internal threaded piston rod



Section X



Section Z

