

## 4-20mA Loop Powered DPM342



- 11mm digit height
- Loop powered LED backlighting
- Snap-in module
- Auto polarity
- Decimal point configuration via jumper links
- Screw terminal block connection



H = 20, W = 40, D = 15 (excl. pins)  
Panel cut-out 18 x 38

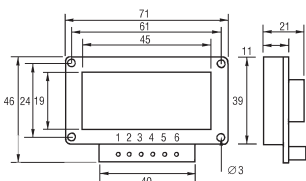
Accuracy 0.05%  
Linearity  $\pm 1$  count  
Sample rate 3 samples/sec

Operating temperature 0 to 50°C  
Loop drop 5.6V typical

PM24

Mftrs. List No.	Order Code	1+	5+	10+	25+
DPM342	331-028				

## LCD Module — Control Loop Powered OEM-035C



- Pin
- 1 Positive current input
  - 2 Negative current input
  - 3 DP3 } For decimal point selection connect required DP to DS
  - 4 DP2 } otherwise leave disconnected.
  - 5 DP1 }
  - 6 DS

- 3½ digit LCD process indicator which derives its power from a 4-20mA control loop source
- Panel mounted via M3 fixing holes or by using optional mounting bezel
- 6 way PCB terminal block provided for input connection and decimal point selection
- Adjustable zero and span to give full scale output up to 1999

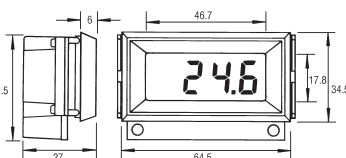
Character height 12.7mm  
Accuracy ( $\pm 1$  digit)  $\pm 0.1\%$   
Zero span at 4mA -350 min, 350 max.  
Full scale span at 20mA 500 min, 1999 max.  
Sample rate 2.5 readings/sec.  
Temperature coefficient (ppm/°C) 100  
Operating temperature 0 to 50°C  
Storage temperature -10°C to 80°C  
Supply Self powered from current loop

Mftrs. List No. OEM-035C = 108-912, MB-501 = 108-911

PM40

Module	Order Code	1+	5+	10+	25+	50+
Module	.108-912					
Bezel	.108-911					

## LCD Panel Meter — Control Powered Loop 1008mA



Panel cut-out = 63 32.5

- 3½ digit LCD panel meter which drives its power from the 4-20mA control loop
- Provides remote indication of control signal level during control of electrical processing equipment
- Adjustable zero and span to give full scale output up to 1999

Character height 12.7mm  
Accuracy ( $\pm 1$  digit) 0.3%  
Range (adjustable) 0 to 1999  
set to 4mA = 00.0  
20mA = 100.0

Supply Self powered from current loop  
Operating temperature 0°C to 50°C  
Storage temperature -20°C to 80°C

Mftrs. List No. 1008mA

PM32

Order Code	1+	5+	10+	25+	50+
107-582					

## LED/LCD Modules 'DMS Range'



- Loop powered versions with low power LCD or LED displays
- Externally powered devices have full size LED displays
- 3½ digit readouts with  $\pm 0.5\%$  FS accuracy
- DIP switch selectable range and decimal points
- On-board gain(span) and offset(zero) adjustments
- Screw terminal input for easy panel mounting

Type	Character Height	Display Colour	Power Supply	Order Code
1	9.4	Low powered red	Loop powered	970-580
2	14.2	Standard red	+5V	970-591
3	14.2	Standard green	+5V	970-608
4	14.2	Low power red	+5V	970-610
5	14.2	High intensity red	+5V	970-621
6	14.2	Low power red	+7.5V to +32V	970-633
7	10.2	LCD	Loop powered	970-645

Type	Body H	Body W	Body D	Built-in Bezel H	Built-in Bezel W	Panel Cut-out H	Panel Cut-out W
1	20	33	25	22	35	21	34
2 to 6	21	53	29	23	55	22	54
7	21	53	24	23	55	22	54

PM86

Type	Mftrs. List No.	Order Code	1+	5+	10+	25+
1	DMS-20PC-4/20S	970-580				
2	DMS-30PC-4/20S-5RS	970-591				
3	DMS-30PC-4/20S-5GS	970-608				
4	DMS-30PC-4/20S-5RL	970-610				
5	DMS-30PC-4/20S-5RH	970-621				
6	DMS-30PC-4/20S-24RL	970-633				
7	DMS-30LCD-4/20S	970-645				

## LCD Digital Thermometer Modules

### Type K Thermocouple Module DTM995



Module H = 39, W = 71.5, D = 24.5  
Bezel H = 44, W = 76, Panel cut-out = 40 x 72,  
Mounting hole dia. = 3.2

- 3½ digit LCD Type K thermocouple temperature indicator
- Large 19mm digit height
- Cold junction compensation
- 20 turn pots for easy calibration
- LED backlight
- Simple screw terminal connections
- Supplied with mounting bezel/accessories and operating instructions
- Optional satin alloy finish IP67/NEMA 4X rated bezel with integral glass window, panel clamps and 'O' ring seals

Power supply 9.0V typ., (7.5V min. 24V max.)  
Supply current 3.5mA typ. (@ 9V)  
Backlighting supply 50mA typ. (5V)  
Thermocouple range -50°C to +600°C  
Accuracy (overall error) 1%  $\pm 1$  count typ.  
Temperature stability 0.05°C max.  
Sampling rate 3 samples/sec.

Mftrs. List No. DTM995 = 530-062, BEZ900-IP = 330-930

PM8

Module	Order Code	1+	5+	10+	25+	50+
Module	530-062					
IP67/NEMA 4X Bezel	330-930					