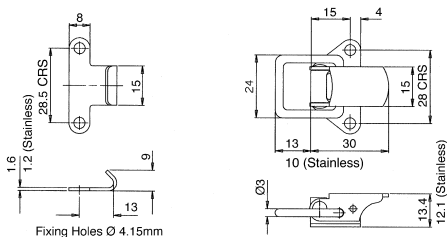
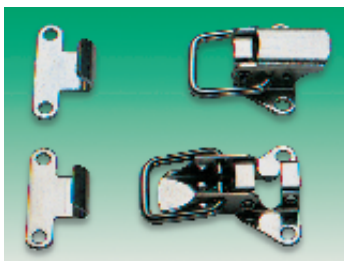


Toggle Latches

Compact, Rigid Link, Strong

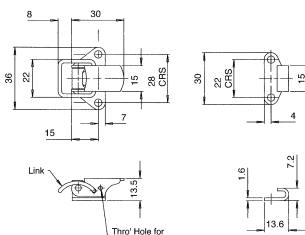
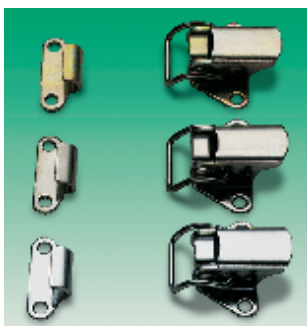


- Neat, compact appearance
- With 3mm \varnothing straight link
- Bright zinc steel or stainless steel (Grade 316) versions
- 5mm pull up
- Locking hole feature
- Rivet base

stc148

Order Multiple=2	Order Code	2+	6+	10+	20+	50+
Bright zinc steel	716-6643					
Stainless steel	716-6655					

Compact, Curved Link

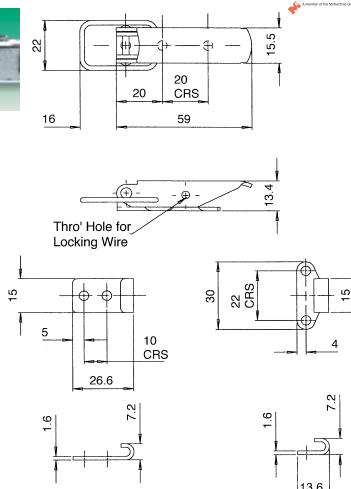


- Neat, compact appearance
- Curved link with 5mm pull up
- Locking hole feature
- Rivet base
- Versions available in zinc-plated steel, chrome-plated steel and stainless steel (Grade 304)

stc149

Order Multiple=2	Order Code	2+	6+	10+	20+	50+
Chrome-plated	716-7064					
Stainless steel	716-7076					
Zinc-plated	717-1468					

Slim-Line Rigid Link



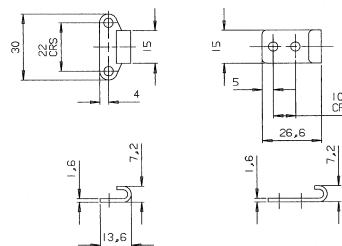
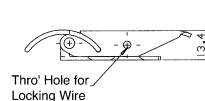
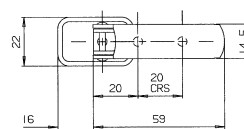
- Neat appearance - base contained within lever envelope
- With straight link
- Locking hole feature
- Rivet base
- 15mm pull up
- Versions available in zinc-plated steel, chrome-plated steel and stainless steel (Grade 304)
- Each kit is supplied with two designs of strike
- 12.7mm Max. deflection without distortion
- Bright zinc-plated steel
- Complete with standard strike

stc152

Order Multiple=2	Order Code	2+	6+	10+	20+	50+
Zinc-plated	716-7805					
Chrome-plated	716-7817					
Stainless steel	716-7829					

stc150

Slim-Line Curved Link

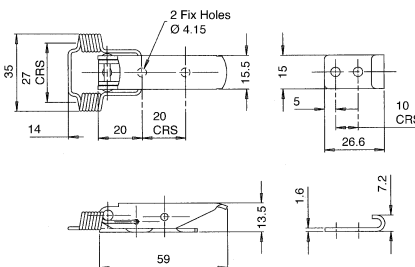


- Neat appearance - base contained within lever envelope
- Locking hole feature
- Rivet base
- 15mm pull up
- Versions available in zinc-plated steel, chrome-plated steel and stainless steel (Grade 304)

stc151

Order Multiple=2	Order Code	2+	6+	10+	20+	50+
Zinc-plated	716-8147					
Chrome-plated	716-8159					
Stainless steel	716-8160					

Coil Spring Link, Slim-Line



- Neat appearance - base contained within lever envelope
- With coiled link for extra adjustment
- Locking hole feature
- Rivet base
- 12.7mm Max. deflection without distortion
- Bright zinc-plated steel
- Complete with standard strike

stc152

Order Multiple=2	Order Code	2+	6+	10+	20+	50+
	716-8380					