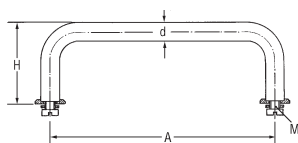


## Handles — continued

### Rounded



- High quality
- Manufactured from aluminium with black/natural anodised finish, or high gloss chrome plated steel
- Chrome plated handles supplied with end rings, mounting screws and washers
- Aluminium handles not supplied with fixing screws, end rings or washers

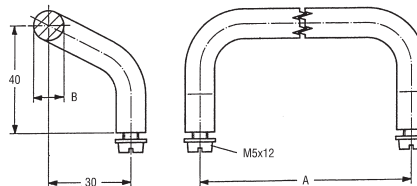
A	H	d	Screw Size	Mftrs. List No.	Order Code
30	18	6	M3	270.8	305-8505
35	18	6	M3	270.9	305-8517
45	29	6	M3	270.1	305-8529
55	29	7	M4	270.1	861-273
88	32	8	M4	270.2	861-285
100	42	10	M5	270.6	861-297
120	42	10	M5	270.3	861-303
180	42	10	M5	270.4	861-315
200	42	10	M5	270.7	305-8530
235	42	10	M5	270.5	305-8542
100	50	11	M5	3280.1603	861-327
120	50	11	M5	3280.1303	861-339
88	50	11	M5	3280.1201	305-8554
120	50	11	M5	3280.1301	305-8566

H213

#### Order Multiple=2

Finish	Fixing Centres	Order Code	2+	10+	20+	40+
Chrome	30	305-8505				
Chrome	35	305-8517				
Chrome	45	305-8529				
Chrome	55	861-273				
Chrome	88	861-285				
Chrome	100	861-297				
Chrome	120	861-303				
Chrome	180	861-315				
Chrome	200	305-8530				
Chrome	235	305-8542				
Black Anodised	100	861-327				
Black Anodised	120	861-339				
N.Anodised	88	305-8554				
N.Anodised	120	305-8566				

### Round, Offset Aluminium/Steel



\* Not supplied with steel version

- Offset design gives stability
- Plain/black anodised aluminium or chrome plated steel
- Ideal for push/pull or pickup operations
- Fixings supplied with aluminium handle (Not with steel version)

Carrying capacity: 75kg

H301

#### Order Multiple=2

Fixing Centres (A)	(B)	Mftrs. List No.	Order Code	2+	10+	20+	40+
<b>Plain Anodised Aluminium</b>							
88	11	3313.0881	305-4561				
100	11	3313.1001	305-4573				
120	11	3313.1201	305-4585				
<b>Black Anodised Aluminium</b>							
88	11	3313.0883	305-4597				
100	11	3313.1003	305-4603				
120	11	3313.1203	305-4615				
<b>Steel, Chrome Plated</b>							
100	10	3270.6451	305-4627				

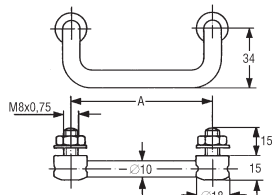
27

908

Knobs, Handles & Hardware

### Folding

#### Chrome/Plastic Coated



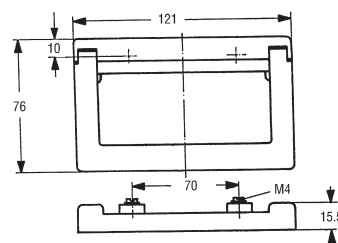
- Manufactured from high gloss, chrome plated steel
- Plastic coated option
- Foldable inwards
- Spring lock mechanism to hold in position
- 50kg per pair carrying capacity
- Supplied with M8 nuts and washers

H225

#### Order Multiple=2

Fixing Centres (A)	Mftrs. List No.	Order Code	2+	10+	20+	40+
<b>Plain</b>						
100	286.6	861-250				
120	286.3	861-261				
<b>Plastic Coated</b>						
100	3286.1003	305-4214				
120	3286.1203	305-4226				

### Folding, Instrument



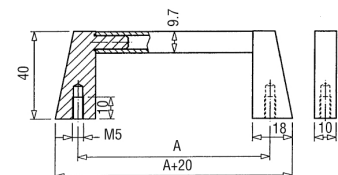
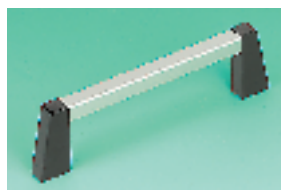
- High quality polished aluminium
- Top mounting
- Spring loaded handle

- Supplied with fixing hardware
- Ideal for professional instrumentation

H302

Mftrs. List No.	Order Code	1+	10+	20+	40+
262.14	305-5899	46.50	41.85	39.51	37.20

### Equipment



- Attractive aluminium handle designed for heavier loads
- Black powder-coated ends, natural anodised hand rail
- Supplied with fixing hardware

Carrying capacity 75kg

H288

Fixing Centres (A)	Mftrs. List No.	Order Code	1+	5+	10+	20+
88	3001.0881	306-0846				
100	3001.1001	306-0858				
120	3001.1201	306-0860				
180	3001.1801	306-0871				
200	3001.2001	306-0883				
235	3001.2351	306-0895				