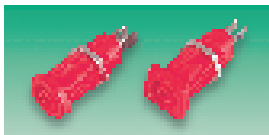


## 4mm Shrouded Connectors — continued

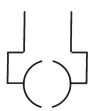
### Shrouded N/O Contact Sockets 20A

MC

Best Value



6.35mm fast-on terminals



Max Dia = 14.5, L = 37 W = 14.5, L = 37  
Panel cut-out = 12 (M12 thread), Panel thickness = 19 max. Electrical connection (N/O)

A range of fully shrouded panel mounting sockets which mate with the stackable plugs above. They feature twin 6.35mm fast-on terminals which form half cradle contacts within the connector body. The half cradle contacts are connected to each other when a plug is inserted and thereby offer N/C or N/O capabilities.

|                   |  |                           |  |
|-------------------|--|---------------------------|--|
| Contact rating    | 20A<br>Note: for full 32A capability link terminals together | Housing Temperature range | Polyamide 66, <b>UL94-HB</b><br>-40°C to +75°C |
| Operating voltage | 1000V CATII Termination                                      | Contacts                  | Brass, nickel plated                           |

Mftrs. List No. Round = XEB1/R+Colour, Square = XEB1/Q+Colour

CS189

#### Round Flange

| Colour | Order Code | Colour | Order Code | Colour | Order Code |
|--------|------------|--------|------------|--------|------------|
| Red    | 149-459    | Green  | 149-498    | Yellow | 149-500    |
| Black  | 149-497    | Blue   | 149-499    |        |            |

#### Square Flange

| Colour | Order Code | Colour | Order Code |
|--------|------------|--------|------------|
| Red    | 149-841    | Yellow | 149-845    |
| Black  | 149-842    |        |            |

| Order Multiple=5 | Order Code | 5+ | 50+ | 100+ | 250+ | 500+ |
|------------------|------------|----|-----|------|------|------|
| Price Each       |            |    |     |      |      |      |

All colours round or square

## 6mm Connectors

### 6mm

For 10mm<sup>2</sup>/16mm<sup>2</sup>/25mm<sup>2</sup> Cable

MC



- For high flex cable
- 6mm panel plug supplied with coloured ID rings
- Free sockets supplied with standard black sleeve
- Set of coloured sleeves available
- Panel plug has 4mm socket hole for testing with shrouded plugs
- Live parts of socket are touch-proof in unplugged condition to IEC529, EN60529, DIN/VDE 0470 part 1

|                |      |
|----------------|------|
| Current rating | 80A  |
| Voltage rating | 600V |

|                |                        |                        |                        |
|----------------|------------------------|------------------------|------------------------|
| Mftrs List No: | 93209 = 309-0966,      | 15.0017-21 = 309-0978, | 15.0020-21 = 309-0980, |
|                | 15.0050-21 = 309-0991, | 15.0078-21 = 309-1004, | 15.0084-21 = 309-1016, |
|                | 15.0092-21 = 309-1028, | 93388 = 309-1030       |                        |

CS560

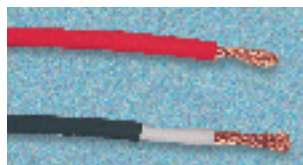
#### Pack Quantity = 1

|  | Order Code | 1+ | 10+ | 25+ | 50+ | 100+ |
|--|------------|----|-----|-----|-----|------|
| Panel Plug                                 | 309-0966   |    |     |     |     |      |
| In-line Socket for 10mm <sup>2</sup> cable | 309-0978   |    |     |     |     |      |
| In-line socket for 16mm <sup>2</sup> cable | 309-0980   |    |     |     |     |      |
| In-line socket for 25mm <sup>2</sup> cable | 309-0991   |    |     |     |     |      |
| R/A socket for 10mm <sup>2</sup> cable     | 309-1004   |    |     |     |     |      |
| R/A socket for 16mm cable                  | 309-1016   |    |     |     |     |      |
| R/A socket for 25mm <sup>2</sup> cable     | 309-1028   |    |     |     |     |      |
| Set of coloured sleeves                    | 309-1030   |    |     |     |     |      |

## Extra Flexible Cable

### Double Insulated-Extra Flexible PVC or 'Thermoflex'

MC



Extra flexible multi-stranded fine plain copper conductors with either PVC or 'Thermoflex' (cross linked thermoplastic) double insulation. Suitable for test lead applications over a wide temperature range. Available in Red or Black with White inner insulation for inspection purposes.

|                          | PVC                | Thermoflex  |
|--------------------------|--------------------|---|
| Nominal outside diameter | 4.0mm              | 4.0mm   |
| Conductor size           | 651/0.07mm         | 462/0.08mm  |
| Conductor area           | 2.5mm <sup>2</sup> | 2.5mm <sup>2</sup>  |
| Voltage rating           | 1000V              | 1000V   |
| Current rating           | 32A                | 32A   |
| Operating temperature    | -10°C to +70°C     | -30°C to +90°C (cont.)<br>-30°C to +120°C (10 mins)<br>+300°C (10 secs) |
| Soldering iron resistant | —                  | —   |

FOR SUITABLE CONNECTORS SEE PAGES 507 - 512

CS313

| 5m Coils   | Colour | Mftrs. List No. | Order Code | Price Per Coil |    |     |     |
|------------|--------|-----------------|------------|----------------|----|-----|-----|
|            |        |                 |            | 1+             | 5+ | 10+ | 25+ |
| PVC        | Red    | 22-0130-1       | .297-756.  |                |    |     |     |
|            | Black  | 22-0130-4       | .297-768.  |                |    |     |     |
| Thermoflex | Red    | 22-0180-1       | 297-770.   |                |    |     |     |
|            | Black  | 22-0180-4       | 297-781    |                |    |     |     |

## Panel Mounting Terminals

### 4mm Fork



Insulated forks to fit terminals between 4 and 7mm in diameter. Accepts 4mm plugs either longitudinally or transversely.



L = 53,  
Jaw width = 7.1

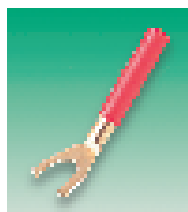
|                    |     |                   |                      |
|--------------------|-----|-------------------|----------------------|
| Operating voltage  | 50V | Temperature range | -25°C to +40°C       |
| Contact resistance | 3mΩ | Contacts          | Brass, nickel plated |

Mftrs. List No. KB20+colour 4mm socket, transverse hole

CS296

| 5 Per Pack | Order Code | Price Per Pack |     |     |     |      |
|------------|------------|----------------|-----|-----|-----|------|
|            |            | 1+             | 10+ | 25+ | 50+ | 100+ |
| KB20       |            |                |     |     |     |      |
| Red        | 495-992    |                |     |     |     |      |
| Black      | 496-005    |                |     |     |     |      |

### 45° Fork 20A



Fork terminals for mating stud terminals up to 6mm diameter with standard or shrouded 4mm plugs.

Best Value

Overall length = 43.2

|                    |             |                   |                           |
|--------------------|-------------|-------------------|---------------------------|
| Current rating     | 20A         | Temperature range | -40°C to +80°C            |
| Working voltage    | 1000V CATII | Housing           | Polyamide, <b>UL94V-2</b> |
| Contact resistance | 0.3mΩ       | Contacts          | Brass, gold plated        |

Mftrs. List No. 23.0440-x where x = 1 - red, 4 - black

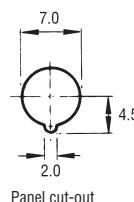
CS259

| 2 Per Pack    | Order Code | Price Per Pair |     |     |     |
|---------------|------------|----------------|-----|-----|-----|
|               |            | 1+             | 10+ | 25+ | 50+ |
| Red and Black | 462-974    |                |     |     |     |

### 4mm Insulated, 15A



Base dia = 13.0, Height closed = 37.0, Height open = 44.0



CLIFF