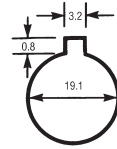
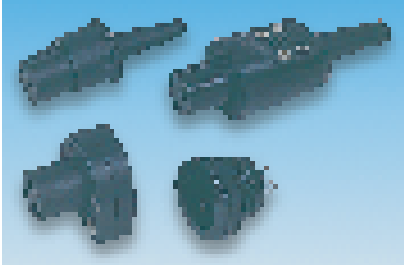


Circular Mains — Continued

3 Pole Miniature Inlet 3A



Panel cut-out

313-968 * (50V) L = 55, Dia = 20.5	313-970 L = 72.9, Dia = 24.2
313-981 H = 27.1, W = 25.4, D = 25	313-993 L = 22.2, Dia = 23.8

All the connectors feature keyway polarisation and solder terminations. A rear insulation boot is available for improved safety. Order Code 151-744, see page 418.

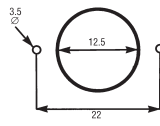
Contact rating	3A @ 250V ac	Contacts	Sockets	Brass, silver plated
Temperature range	-20°C to +60°C		Pins	Brass, tin plated
Housing	Black phenolic resin			

***Warning:** 313-968 (50V rated) may be used for 250V ac operation but only in totally enclosed applications.

Mftrs. List No. PX0631 = 313-968, PX0646 = 313-970, PX0430SE = 313-981, PX0429 = 313-993
CM66X

	Order Code	1+	100+	250+	500+	1000+	2000+
Free socket	.313-968						
Free socket cord grip strain relief	.313-970						
Free socket 90°	.313-981						
Panel plug	.313-993						

3 Pole Sub-Miniature Inlet 5A



Panel cut-out

147-074 L = 35, Dia = 15.0	147-077 H = 19, W = 29, D = 22.5
-------------------------------	-------------------------------------

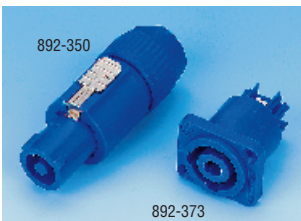
The fully shrouded female free socket has cable strain relief, cord clamp and solder terminations. The chassis plug has shrouded pins to prevent accidental damage and solder bucket termination.

Contact rating	5A @ 250V ac	Contacts	Pin	Brass, silver plated
Cable dia.	4.0 max		Socket	Phosphor bronze, silver plated
Housing	Blue polyamide			

Mftrs. List No. RPC2 12P 3S = 147-074, RPC2 12RB 3P = 147-077
CM68

	Order Code	1+	50+	150+	250+
Free socket	147-074				
Chassis plug	147-077				

'Power-Con' Locking 3 Pole



- Fast and easy locking system
- Pre-mating contact for protective earth
- High current Capacity
- Cable connector has screw type terminals
- Contact design prevents arcing, when disconnected under load
- Mating connectors identified by mechanical keyway and colour
- Power inlet coded 'A' type, outlet coded 'B' type

Current rating	20Arms @ wire size 2.5mm ²	Housing	PA 6.6
Voltage rating	250Vac	Insert	PBT
Dielectric strength	4240Vp.p	Contacts	Copper zinc alloy, with gold over tin plating
Contact resistance	≤3mΩ after 5000 mating cycles		
Temperature range	-30°C to +80°C		

Warning: These connectors are not suitable for domestic use as defined by the Plugs and Sockets Safety Regulations 1987
CM402

	Mftrs. List No.	Order Code	1+	25+	50+	100+
Cable Connector						
A' type	NAC3FCA	892-350				
B' type	NAC3FCB	892-361				
Chassis Connector						
A' type	NAC3MPA	892-373				
B' type	NAC3MPB	892-385				

Insulation Boot



A black PVC rear insulation boot designed to provide improved safety from the electrical connections on the following connectors: **313-993, 314-432, 313-956, 314-055 and 314-031.**

Length = 30, Cable dia = 5.5

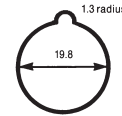
Temperature range	-20°C to +60°C
Mftrs. List No.	9455

CM71X

	Order Code	1+	100+	250+	500+	1000+
	.151-744					

Shrouded Contact Mains

3 and 4 Pole Miniature 3A



314-020 H = 30.5, W = 25.5, D = 26.1	314-031 L = 28.4, Dia = 25.4
---	---------------------------------

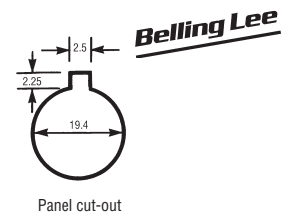
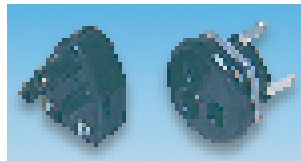
Three and four pole fully shrouded mains connector pairs. The plug has screw terminations, right angle cable entry, cord grip and touch proof pins. The socket has tag terminations. A rear insulation boot is available for improved safety, Order Code 151-744, see above.

Contact rating	3A @ 250V ac	Temperature range	-20°C to +70°C
Contact resistance	10mΩ max	Housing	Glass filled nylon
Insulation resistance	10,000 MΩ	Contacts	Pin: Brass, nickel plated
Breakdown voltage	4.2kV	Sockets	Brass, tin plated

Mftrs. List No. SA2403 = 314-020, SA2404 = 314-031, SA2367 = 314-043, SA2368 = 314-055
CM72X

	Order Code	1+	100+	250+	500+	1000+	2000+
3 pole							
Free 90° plug	.314-020						
Panel socket	.314-031						
4 pole							
Free 90° plug	314-043						
Panel socket	314-055						

3 Pole Miniature 3A



314-067 H = 26.2, W = 17.9, D = 22.2	314-079 L = 23.1, Dia = 25.4
---	---------------------------------

Touch proof fully shrouded pins and sockets provide a safe yet compact mains connector. The plug has screw terminations, right angle cable entry, cord grip and touch proof terminals.

314-067 Screw terminations right angle cable entry and cord grip.

Contact rating	3A @ 250V ac	Temperature range	-25°C to +70°C
Contact resistance	5mΩ max	Housing	(314-079) Black phenolic resin
Insulation resistance	5,000 MΩ		(314-067) Black nylon
Breakdown voltage	5.5kV	Contacts	Brass, silver plated

Mftrs. List No. L1436AP = 314-067, L1436BS = 314-079
CM73

	Order Code	1+	50+	100+	250+	500+	1000+
Free 90° plug	314-067						
Panel socket	314-079						