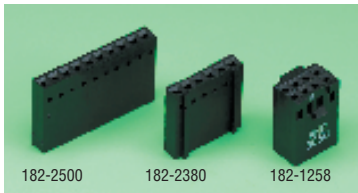


Crimp Housings



- Non-polarised for use with unshrouded headers

FOR SUITABLE CRIMP TERMINALS SEE **BELOW**

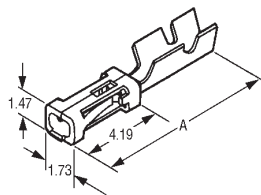
CP363

No. of Ways	Mftrs. List No.	Order Code	1+	50+	100+	500+	1000+
Single Row - non-polarised							
2	87499-3	183-3200					
3	87499-5	183-3212					
4	87499-7	183-3224					
6	1-87499-1	183-3248					
8	1-87499-3	183-3250					
10	1-87499-7	182-2500					
12	2-87499-1	182-2512					
Double Row - non-polarised							
2 2	5-87456-0	973-257					
2 3	87456-2	182-0023					
2 4	87456-4	973-269					
2 5	87456-6	182-0047					
2 6	87456-8	973-270					
2 8	1-87456-2	973-282					
Single Row - centre polarised/detent							
3	102241-1	182-2573					
4	102241-2	182-2585					
6	102241-4	182-2380					
8	102241-6	182-2408					
10	102241-8	182-2421					
12	1-102241-0	182-2433					
Double Row - end polarised/detent							
2 3	87631-2	182-1246					
2 4	87631-4	182-1258					
2 5	87631-6	182-1260					
2 6	87631-8	182-1179					
2 8	1-87631-2	182-1192					

Crimp Terminals for 'MODU'



182-5446



- Tin and gold versions

Wire Size (AWG)	Wire Size (mm ²)	Dimension 'A' (mm)	Mftrs. List No.	Order Code
26-22	0.12-0.4	11.30	87756-7	182-3218
26-22	0.12-0.4	11.30	87667-5	973-294
24-20	0.2-0.6	11.94	87523-6	182-5446
24-20	0.2-0.6	11.94	86016-5	973-300
26-22	0.2-0.4	11.30	102128-2	308-8480
26-22	0.12-0.4	11.30	102128-1	308-8492
24-20	0.12-0.6	11.30	1-87309-3	308-8509
24-20	0.2-0.6	11.30	1-87309-4	308-8510

FOR SUITABLE CRIMP TOOL SEE **PAGE 363**

CP364

Order Multiple=10		Price Each	10+	50+	100+	500+	1000+
STD Pressure	Order Code						
Tin plated	182-3218						
Selective gold	973-294						
Tin plated	182-5446						
Selective gold	973-300						
High Pressure							
Tin plated	308-8480						
Selective gold	308-8492						
Tin plated	308-8509						
Selective gold	308-8510						

Crimp Tool for 'MODU'



CP365

Wire Size mm ²	Mftrs. List No.	Order Code	Price Each
0.12-0.4	90418-1	145-2538	1+
0.2-0.6	90202-2	215-5576	

CST-100 Crimp Housing



- Single row wire-to-board interconnections
- Able to mate with MTA headers

Spacing: 2.54mm
Material: Nylon **UL94V-0 natural**

Insulation resistance: 1 x 10⁸ MΩ min
Temperature Range: -55°C to +105°C

FOR SUITABLE CRIMP CONTACTS SEE **THIS PAGE**
FOR SUITABLE MTA HEADERS SEE **PAGE 268**

CP356

Order Multiple=5

No. of ways	Mftrs. List No.	Order Code	5+	50+	500+	1000+
2	770602-2	749-941				
3	770602-3	749-953				
4	770602-4	749-965				
5	770602-5	749-977				
6	770602-6	749-989				
7	770602-7	749-990				
8	770602-8	750-001				
9	770602-9	750-013				
10	1-770602-0	750-025				
12	1-770602-2	750-037				
15	1-770602-5	750-049				

CST-100 Crimp Terminal



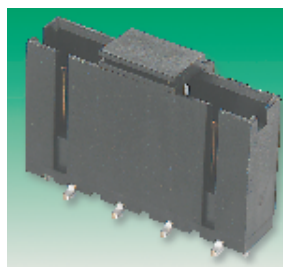
- Tin crimp terminal CST-100 housing

CP357

Order Multiple=100

AWG	Wire Size (mm ²)	Mftrs. List No.	Order Code	100+	500+	1000+	5000+
22-26	Tin	770666-1	750-050				

Amprodu Vertical Surface Mount Header



- A vertical header in surface mount configuration featuring a hold down barb and placement cap for MTE receptacles
- 2.54mm centerline single row
- IR and Vapor Phase compatible up to 260°C for 60 seconds
- Placement cap for automatic placement
- Contact: Brass finish with tin-lead plating on the mating interface and finished with tin-lead plating

Asian Selection

New

- Cycle Life: 30 cycles for 100μ in. tin-lead
- Housing and placement cap: IR compatible black glass-filled thermoplastic, **UL94V-0**

Current: 3.0A for a single contact in free air Temperature: -65°C to +105°C

CP419/SI

Order Multiple=5		Price Each	5+	50+	500+	1000+
No. of Ways	Mftrs. List No.	Order Code				
2	0-1375549-2	356-7345				
3	0-1375549-3	356-7357				
4	0-1375549-4	356-7369				
5	0-1375549-5	356-7370				
6	0-1375549-6	356-7382				
7	0-1375549-7	356-7394				
8	0-1375549-8	356-7400				
9	0-1375549-9	356-7412				
10	1-1375549-0	356-7424				
11	1-1375549-1	356-7436				
12	1-1375549-2	356-7448				