

No. of Ways	Order Code	Price Each				
		1+	10+	25+	50+	100+ 250+
Male Cable Jack						
3	307-3701					
5	307-3713					
8	307-3725					
12	307-3737					
Female Cable Jack						
3	307-3749					
5	307-3750					
8	307-3762					
12	307-3774					
Male Panel Receptacle						
3	307-3786					
5	307-3798					
8	307-3804					
12	307-3816					
Female Panel Receptacle						
3	307-3828					
5	307-3830					
8	307-3841					
12	307-3853					
Protective Cap						
3/5	307-3865					
8	307-3877					
12	307-3889					

Miniature Water-Proof Circular Connector R28 Series



- Waterproof to 20m
- Lightweight
- High density version of Tajimi R04 series connectors

Shell	Brass & Zinc Alloy, Nickel Plated	Insulation	1,000MΩ min
Contact	Copper Alloy, Gold Plated	Contact resistance	10mΩ max
Insulation	PBT Resin to UL 94V-0	Shock	50G
Current rating	2A	Vibration	MIL-STD-202-201A
Voltage rating	100V ac	Moisture resistance	MIL-STD-202-103B
Max wire size	0.1mm ² (26AWG)	Corrosion	MIL-STD-202-101D
		Temperature	-25 to +85°C
		Withstands water pressure	2Kg/cm ² (atg)

Mfrs. List No.	R28-P8M = 330-3081, R28-P12F(7.3) = 330-3111, R28-J8F = 330-3147, R28-R12M = 330-3172, R04-CR3 = 330-3202,	R28-P12M(7.3) = 330-3093, R28-J8M = 330-3123, R28-J12F(7.3) = 330-3159, R28-R8F = 330-3184, R04-CR6 = 330-3214	R28-P8F = 330-3100, R28-J12M(7.3) = 330-3135, R28-R8M = 330-3160, R28-R12F = 330-3196,
----------------	--	--	---

CM507

No. of Ways	Order Code	Price Each				
		1+	10+	25+	50+	100+ 250+
Male Cable Plug						
8	330-3081					
12	330-3093					
Female Cable Plug						
8	330-3100					
12	330-3111					
Male Cable Jack						
8	330-3123					
12	330-3135					
Female Cable Jack						
8	330-3147					
12	330-3159					
Male Panel Receptacle						
8	330-3160					
12	330-3172					
Female Panel Receptacle						
8	330-3184					
12	330-3196					
Protective Cap						
8	330-3202					
12	330-3214					

Series '101', '102', & '103'

W.W. FISCHER

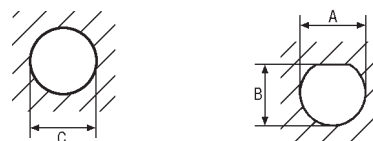
- A range of high quality circular connectors
- Positive plug/socket latching
- Pressure tight and high vacuum sealed designs
- Low contact resistance
- Excellent RFI/EMC shielding capability
- The series includes: circular multipole, coax and triax connectors
- IP68 rated

	Series	No of Ways				
		3	4	5	7	12
Current rating (A)	Series 102	8.2	5.5	5.2	2.0	—
Per contact, all loaded	Series 103	—	—	—	5.0	2.0
Dielectric withstand	Series 102	1.3	1.2	0.8	0.8	—
Voltage kVac	Series 103	—	—	—	1.3	1.2
Contact resistance	≤ 8mΩ					
Insulation resistance	> 10 ⁹ mΩ					
Temperature range (standard)	-65°C to +200°C					
(sealed)	-25°C to +135°C					
Mating life	> 5000 cycles					
Body Material	Brass, nickel /chromium plating					
Contacts (plugs)	Brass, 4μ nickel/1μm gold plating					
(socket)	Phosphor bronze, 4μm nickel/1μm gold plating					
Insulator	PEEK (polyether-etherbetone) UL94V-0, UL-746 200°C					
Sealed versions:	Protection IP68 (80 meters)					
	Max pressure 8 bar					

CM424

Series '102' Circular and Coaxial

W.W. FISCHER



- A range of circular multipole and coaxial connectors

Dimension	A	B	C	Depth behind panel standard	Max. panel thickness standard	sealed
	9.1	8.5	10.1	17.5	18	9 3.5

CM429

No. of Ways	Mfrs List No.	Order Code	Price Each				
			1+	5+	10+	50+	100+
Free Plug							
3	SE102A052-130	964-967					
4	SE102A053-130	964-979					
5	SE102A054-130	964-980					
7	SE102A056-130	964-992					
Panel Socket							
3 standard	D102A052-130	965-005					
4 standard	D102A053-130	965-017					
5 standard	D102A054-130	965-029					
7 standard	D102A056-130	965-030					
3 sealed IP68	DBEE102A052-130	965-042					
4 sealed IP68	DBEE102A053-130	965-054					
5 sealed IP68	DBEE102A054-130	965-066					
7 sealed IP68	DBEE102A056-130	965-078					
Panel/PCB Socket 90°							
3 Way	DBPC102A052-130	628-554					
4 Way	DBPC102A053-130	629-250					
5 Way	DBPC102A054-130	629-261					
7 Way	DBPC102A056-130	629-273					
Coaxial							
Free plug	SE102A002	965-698					
Panel skt (stan)	D102A002	965-704					
Panel skt (IP68)	DBEE102A002	965-716					
Cable Clamps							
Cable range (mm)							
2.1 to 2.6							
2.6 to 3.1	E31102.2/3.1+B	965-091					
3.1 to 3.6	E31102.2/3.6+B	965-108					
3.6 to 4.1	E31102.2/4.1+B	965-110					
4.1 to 4.3	E31102.2/4.3+B	965-121					

continued