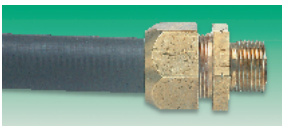


## Pliable Conduit

**PVC Coated Steel, low Smoke and Fume (LSF)**  
LS2 Range



Conduit fitted with connector

- Offers complete security from the transmission of EMI, RFI and EMP
- Twin layer leaded steel construction with a black (LSF) PVC outer casing
- Hand bendable-retains its shape once formed
- Standard properties include: lower acid gas emissions, enhanced flame retardancy and increased safety
- Sealing to **IP67**

IN ORDER TO MAINTAIN SCREENING INTEGRITY, CONNECTORS ORDER CODES **576-840** OR **576-852** MUST BE USED

SEC190X

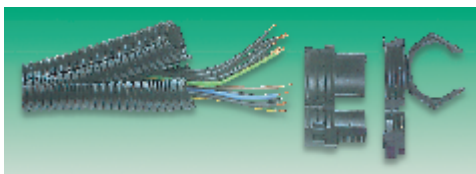
Order Multiple=1

10m Reel Conduit OD/ID	Mftrs. List No.	Order Code	1+	5+	10+
20mm/14.6	PHBF0410	<b>576-827</b>			
25mm/20.4	PHBF0510	<b>576-839</b>			

Order Multiple=4

Connectors Conduit/Thread			4+	20+	40+
20mm/M20	BGM0404	<b>.576-840</b>			
25mm/M25	BGM0505	<b>.576-852</b>			

**Retro-fit, Nylon – IP50**  
Co-Flex system



- Two part flexible conduit, ideal for situations where wiring is already in place or where cable threading would be a problem
- Manufactured from halogen and cadmium free nylon 6
- Resistant to most mineral oils, chemicals and solvents
- Easy to install-can be cut with a knife
- Sealing to **IP50**

Nominal size	O/D	I/D	Bend Radius	Order Code
16	18.5	12.5	95	576-761
20	25.5	19.5	130	576-773
25	31.0	24.2	155	576-785

Operating temperature range -30°C to +80°C

SEC193X

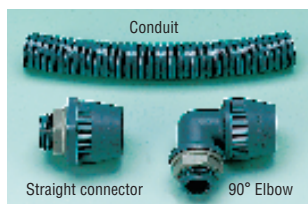
Order Multiple=1

10m Reel Conduit Nominal size	Mftrs. List No.	Order Code	1+	5+	10+
16mm	ECPB0310	<b>.576-761</b>			
20mm	ECPB0410	<b>.576-773</b>			
25mm	ECPB0510	<b>.576-785</b>			

Order Multiple=4

Connectors Conduit/Thread			4+	20+	40+
16mm/PG13	YCMPB0304	<b>.576-797</b>			
20mm/PG21	YCMPB0406	<b>.576-803</b>			
25mm/PG29	YCMPB0507	<b>.576-815</b>			

**Nylon – IP66**  
PMA Range



- Manufactured from tough **self-extinguishing** grey nylon
- Resistant to most mineral oils, chemicals and solvents
- Sealing to **IP66**
- Easy to install – can be cut with a knife
- Highly flexible
- Connectors, elbows (both supplied with locknuts), and clips are available for added versatility

Operating temperature range -40°C to +105°C

SEC158X

10m Reels Conduit – O.D/I.D	Mftrs. List No.	Order Code	1+	5+	10+
16mm/11.9mm	EPG0310	<b>.152-629</b>			
20mm/16.5mm	EPG0410	<b>.152-630</b>			
25mm/22.7mm	EPG0510	<b>.152-631</b>			

Straight Connectors			1+	50+	100+
16mm	YQM0303	<b>.152-632</b>			
20mm	YQM0404	<b>.152-633</b>			
25mm	YQM0505	<b>.152-634</b>			

90° Elbows					
16mm	YXM0303	<b>.152-635</b>			
20mm	YXM0404	<b>.152-636</b>			
25mm	YXM0505	<b>.152-637</b>			

Conduit Clips	Pack Qty.		1+	5+	10+
16mm	10	YCNPC03	<b>.221-132</b>		
20mm	10	YCNPC04	<b>.221-144</b>		
25mm	10	YCNPC05	<b>.221-156</b>		

**Contractor Pack - Nylon IP54**  
Quick Click®



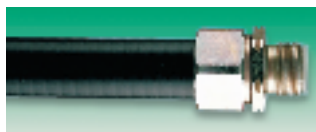
- Pack consists of 10 metres of 20mm nylon conduit plus 10 connectors complete with locknuts
- Manufactured from tough self extinguishing grey nylon 6
- Ideal for light duty applications
- Halogen free
- Sealing to **IP54**

Operating Temperature Range -15°C to +90°C

ele491

Order Code	1+	5+	10+
<b>576-750</b>			

**Ultra-Flexible Conduit (L.S.F)**



- KEBF Ultra flexible conduit
- Low smoke and fume PVC covering
- Ensures high degree of safety
- Fittings
- Nickel plated brass

Construction: conduit - helically wound galvanised steel core with enhanced LSF PVC covering. Pull off rating: KEBF04 - heavy. Crush resistance: KEBF04 - heavy

KEBL/L Covered Ultra Flexible Conduit Coil Lengths	Conduit Size mm	Inside Ø m	Mftrs. List No.	Order Code
10m	20	17.0	KEBF0410	718-9084
10m	25	21.1	KEBF0510	718-9096
10m	32	28.4	KEB0610	718-9102

Conduit Size mm	Thread Type	Pack Qty	Fixed Male Connector		Mftrs	
			Mftrs List No.	Order Code	List No.	Order Code
20	20	10	GAM0404	718-9114	GBM0404	718-9175
25	25	10	GAM0505	718-91265	GBM0505	718-9187
32	32	10	GAM0605	718-9138	GBM0606	718-9199
20	PG16	10	GAP0405	718-9140	GBP0405	718-9205
25	PG21	10	GAP0506	718-9151	GBP0506	718-9217
32	PG29	10	GAP0607	718-9163	GBP0607	718-9229

Ingress Protection **IP54**  
Temp. Rating -20°C to +70°C

ele714

10m Reel Mftrs. List No.	Order Code	1+	5+	10+	20+
KEBF0410 FEC	<b>718-9084</b>				
KEBF0510 FEC	<b>718-9096</b>				
KEBF0610 FEC	<b>718-9102</b>				