

## Metal Film — continued

### 0.5 Watt ±1% – MF50 Series



L = 10.0 Dia = 3.5 Lead length = 28.0 Lead dia = 0.6 Supplied bandoliered on tape (box = 1K PCS)

Power rating @ 70°C	0.5W	Voltage rating	350V
Temperature coefficient	±50 ppm/°C	Maximum overload voltage	700V
		Operating temperature	-55°C to +155°C

Stocked in the following OHMIC Values:

1R = 306-0561	68R = 544-310	820R = 544-577	10K = 544-838	120K = 545-090
1R5 = 306-0573	75R = 544-322	910R = 544-589	11K = 544-840	130K = 545-107
2R2 = 306-0585	82R = 544-334	1K = 544-590	12K = 544-851	150K = 545-119
3R3 = 306-0597	91R = 544-346	1K1 = 544-607	13K = 544-863	160K = 545-120
4R7 = 306-0603	100R = 544-358	1K2 = 544-619	15K = 544-875	180K = 545-132
6R8 = 306-0615	110R = 544-360	1K3 = 544-620	16K = 544-887	200K = 545-144
10R = 544-115	120R = 544-371	1K5 = 544-632	18K = 544-899	220K = 545-156
11R = 544-127	130R = 544-383	1K6 = 544-644	20K = 544-905	240K = 545-168
12R = 544-139	150R = 544-395	1K8 = 544-656	22K = 544-917	270K = 545-170
13R = 544-140	160R = 544-401	2K = 544-668	24K = 544-929	300K = 545-181
15R = 544-152	180R = 544-413	2K2 = 544-670	27K = 544-930	330K = 545-193
16R = 544-164	200R = 544-425	2K4 = 544-681	30K = 544-942	360K = 545-200
18R = 544-176	220R = 544-437	2K7 = 544-693	33K = 544-954	390K = 545-211
20R = 544-188	240R = 544-449	3K = 544-700	36K = 544-966	430K = 545-223
22R = 544-190	270R = 544-450	3K3 = 544-711	39K = 544-978	470K = 545-235
24R = 544-206	300R = 544-462	3K6 = 544-723	43K = 544-980	510K = 545-247
27R = 544-218	330R = 544-474	3K9 = 544-735	47K = 544-991	560K = 545-259
30R = 544-220	360R = 544-486	4K3 = 544-747	51K = 545-004	620K = 545-260
33R = 544-231	390R = 544-498	4K7 = 544-759	56K = 545-016	680K = 545-272
36R = 544-243	430R = 544-504	5K1 = 544-760	62K = 545-028	750K = 545-284
39R = 544-255	470R = 544-516	5K6 = 544-772	68K = 545-030	820K = 545-296
43R = 544-267	510R = 544-528	6K2 = 544-784	75K = 545-041	910K = 545-302
47R = 544-279	560R = 544-530	6K8 = 544-796	82K = 545-053	1M = 545-314
51R = 544-280	620R = 544-541	7K5 = 544-802	91K = 545-065	
56R = 544-292	680R = 544-553	8K2 = 544-814	100K = 545-077	
62R = 544-309	750R = 544-565	9K1 = 544-826	110K = 545-089	



Stocked in the following OHMIC Values:

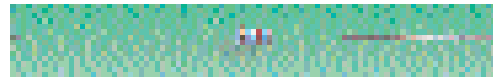
1R = 333-189	39R = 333-463	560R = 333-736	7K5 = 334-017	110K = 334-297
1R2 = 333-190	43R = 333-475	600R = 333-748	8K2 = 334-029	120K = 334-303
1R5 = 333-207	47R = 333-487	620R = 333-750	9K1 = 334-030	130K = 334-315
2R2 = 333-219	51R = 333-499	680R = 333-761	10K = 334-042	150K = 334-327
2R7 = 333-220	56R = 333-505	750R = 333-773	11K = 334-054	160K = 334-339
3R3 = 333-232	62R = 333-517	820R = 333-785	12K = 334-066	180K = 334-340
3R9 = 333-244	68R = 333-529	910R = 333-797	13K = 334-078	200K = 334-352
4R7 = 333-256	75R = 333-530	1K = 333-803	15K = 334-080	220K = 334-364
5R6 = 333-268	82R = 333-542	1K1 = 333-815	16K = 334-091	240K = 334-376
6R2 = 333-270	91R = 333-554	1K2 = 333-827	18K = 334-108	270K = 334-388
6R8 = 333-281	100R = 333-566	1K3 = 333-839	20K = 334-110	300K = 334-390
7R5 = 333-293	110R = 333-578	1K5 = 333-840	22K = 334-121	330K = 334-406
8R2 = 333-300	120R = 333-580	1K6 = 333-852	24K = 334-133	360K = 334-418
9R1 = 333-311	130R = 333-591	1K8 = 333-864	27K = 334-145	390K = 334-420
10R = 333-323	150R = 333-608	2K = 333-876	30K = 334-157	430K = 334-431
11R = 333-335	160R = 333-610	2K2 = 333-888	33K = 334-169	470K = 334-443
12R = 333-347	180R = 333-621	2K4 = 333-900	36K = 334-170	510K = 334-455
13R = 333-359	200R = 333-633	2K7 = 333-906	39K = 334-182	560K = 334-467
15R = 333-360	220R = 333-645	3K = 333-918	43K = 334-194	620K = 334-479
16R = 333-372	240R = 333-657	3K3 = 333-920	47K = 334-200	680K = 334-480
18R = 333-384	270R = 333-669	3K6 = 333-931	51K = 334-212	750K = 334-492
20R = 333-396	300R = 333-681	3K9 = 333-943	56K = 334-224	820K = 334-509
22R = 333-402	330R = 333-693	4K3 = 333-955	62K = 334-236	910K = 334-510
24R = 333-414	360R = 333-705	4K7 = 333-967	68K = 334-248	1M = 334-522
27R = 333-426	390R = 333-717	5K1 = 333-979	75K = 334-250	
30R = 333-438	430R = 333-729	5K6 = 333-980	82K = 334-261	
33R = 333-440	470R = 333-741	6K2 = 333-992	91K = 334-273	
36R = 333-451	510R = 333-753	6K8 = 334-005	100K = 334-285	

These products are available to full documented release, upon request.

Order Multiple=50	Price Each
	MIXED QUANTITY PRICING
Order Code	50+ 500+ 1000+ 10000+
All Values	

RP68

### 0.5 Watt ±5% – SFR16S Series (Supersedes SFR16T Series)



L = 3.4 max, Dia = 1.7 max  
Lead length = 26mm, Lead dia = 0.5  
Supplied bandoliered on tape (box = 5K pcs)

Power rating @ 70°C	0.5W	Voltage rating	200V
Temperature coefficient	1R to 100K ±100ppm/°C 120K to 1M ±250ppm/°C	Operating temperature	-55°C to +155°C

Stocked in the following OHMIC Values:

1R = 476-638	18R = 476-780	330R = 476-936	5K6 = 477-084	100K = 477-230
1R2 = 476-640	22R = 476-791	390R = 476-948	6K8 = 477-096	120K = 477-242
1R5 = 476-651	27R = 476-808	470R = 476-950	8K2 = 477-102	150K = 477-254
1R8 = 476-663	33R = 476-810	560R = 476-961	10K = 477-114	180K = 477-266
2R2 = 476-675	39R = 476-821	680R = 476-973	12K = 477-126	220K = 477-278
2R7 = 476-687	47R = 476-833	820R = 476-985	15K = 477-138	270K = 477-280
3R3 = 476-699	56R = 476-845	1K = 476-997	18K = 477-140	330K = 477-291
3R9 = 476-705	68R = 476-857	1K2 = 477-000	22K = 477-151	390K = 477-308
4R7 = 476-717	82R = 476-869	1K5 = 477-011	27K = 477-163	470K = 477-310
5R6 = 476-729	100R = 476-870	1K8 = 477-023	33K = 477-175	560K = 477-321
6R8 = 476-730	120R = 476-882	2K2 = 477-035	39K = 477-187	680K = 477-333
8R2 = 476-742	150R = 476-894	2K7 = 477-047	47K = 477-199	820K = 477-345
10R = 476-754	180R = 476-900	3K3 = 477-059	56K = 477-205	1M = 477-357
12R = 476-766	220R = 476-912	3K9 = 477-060	68K = 477-217	
15R = 476-778	270R = 476-924	4K7 = 477-072	82K = 477-229	

Order Multiple=10	Price Each
	MIXED QUANTITY PRICING
Order Code	10+ 300+ 3000+ 10000+ 30000+
All Values	

RP157

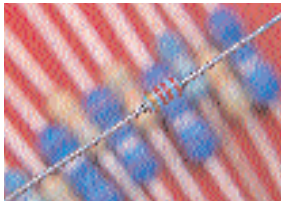
### 0.6 Watt ±1% – MRS25 Series



L = 7 max, Dia = 2.5 max  
Lead length = 26 nom, Lead dia = 0.6  
Supplied bandoliered on tape (box = 1K pcs)

Power rating @ 70°C	0.6W	Voltage rating	350V
Temperature coefficient	1R to 4R7 ±100 ppm/°C 5R6 to 10M ±50 ppm/°C	Operating temperature	-55°C to +155°C

### Metal Film ±1% Resistor Kits



- 0.125, 0.25 and 0.5 watt metal film resistor kits
- E6, E12 and E24 series of values
- 100 pieces of each preferred value from 10R to 1M

E6 Series	10,15,22,33,47,68 (100 each of 31 values)
E12 Series	10,12,15,18,22,27,33,39,47,56,68,82 (100 each of 61 values)
E24 Series	10,11,12,13,15,16,18,20,22,24,27,30,33,36,39,43,47,51,56,62,68,75,82,91 (100 each of 121 values)

	Order Code	1+	3+	6+
<b>0.125 Watt</b>				
E6 Kit	306-0299			
E12 Kit	306-0305			
E24 Kit	306-0317			
<b>0.25 Watt</b>				
E6 Kit	772-161			
E12 Kit	772-173			
E24 Kit	772-185			
<b>0.5 Watt</b>				
E6 Kit	772-197			
E12 Kit	772-203			
E24 Kit	772-215			

### 0.5 Watt ±1% – MFR4 Series



L = 7 max, Dia = 2.3 max.  
Lead length = 23 nom., Lead dia = 0.6  
Supplied bandoliered on tape.

Fully approved to BS9111 N016 and available to BS-CECC 40101-019/FZ and CECC 40101-803/BC release. Approved only in the range 10R to 1M.

Power rating @ 70°C	0.125W 50ppm release 0.25W 100ppm release 0.5W commercial	Temperature coefficient	50ppm/°C
		Voltage rating	250V
		Operating temperature	-55°C to +155°C