

PCB Processing Equipment

UV Exposure Units

MEGA



- Mild steel case with hinged lid finished in black
- Front mounted mechanical or electronic timer

Operating voltage 240Va.c. IEC Inlet

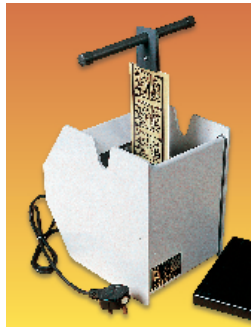
Size	Working Area	Case Size	Timer	Tubes	Mfrs List No.	Order Code
Small	229 159	420 175 90	6 mins mechanical	2 8 W	LV202-E	157-417
Large	330 260	515 400 120	7.5 min electronic	4 15 W	LV204	157-429

PCB139

Size	Order Code	Price Each		
		1+	5+	10+
Small	157-417			
Large	157-429			
8W Kit 2 tubes and starters		157-430		
15W Kit 2 tubes and starters		157-442		

Eurocard PCB Production Tank

ELECTROTEK



- Compact three tank processing unit for R&D and education
- Sturdy thermoplastic case
- Thermostatically controlled developer and etch tanks
- Central spray wash tank with twin spray bars
- Etch tank with bubble agitation to speed up etching times
- PCB clamp and support arm to aide board insertion
- For safety the process chemicals are earthed by a titanium earthing screw

External:
H = 280, W = 205, D = 280

Operating voltage 240Vac 50Hz
Power consumption 400W
Max PCB size 160 100

Note: It is recommended that PCB production equipment is used in conjunction with RCCB

PCB97

Order Code	Price Each		
	1+	5+	
653-548			

PCB Production Tanks

MEGA



- Three individual process tanks for PCB production R&D and education
- **Spray wash** tank for PCB cleaning between processes
- **Bubble Etch** tank with thermostically controlled heater and air pump for bubble agitation
- **Universal** tank with thermostatically controlled heater for developer, photo resist striping or tin plating
- Internal tank constructed of one piece polypropylene with integral top surround
- Sturdy outer case of moulded polyethylene with front mounted control panel

- Splash proof lid with full length mesh PCB folder

External dimensions W = 178 H = 375 D = 522 Tank capacity 5 Litres
Max PCB size 320 260
Electrical specification **Bubble Etch & Universal Tank**
Operating Voltage 240Va.c.
Heater 500W
Thermostat range +10°C to +65°C

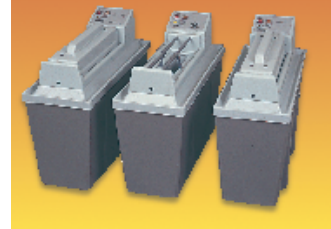
Note: It is recommended that PCB production equipment is used in conjunction with a RCCB

PCB141

Price Each

Tank	Order Code	1+
Spray wash	157-340	
Bubble Etch	157-351	
Universal	157-363	

PCB Production Tanks



Internal: H = 320, W = 52, D = 310 External: H = 455, W = 220, D = 575

- Stable design in vacuum formed polypropylene
- General process tank with thermostatic control between +20°C and +70°C ±5°C
- Spray wash tank with twin spray bars
- Bubble etch tank with thermoplastic control preset to 50°C ±5°C, bubble agitation provides fast etching times
- Full width holding basket in general process and bubble etch tanks

Operating voltage 240V ac
Heaters 600W 14mm silica sheathed with thermal fuse
Capacity 4.5 litres
Max. PCB size 305 170mm

Note: It is recommended that PCB production equipment is used in conjunction with an RCCB

PCB59

Tank	Order Code	Price Each	
		1+	
Process	451-332†		
Wash	451-344†		
Etch	451-356†		

†Available until stocks are exhausted

PCB Production Tanks

MEGA



- Process tanks for PCB production R&D and education
- **Twin tank** combines Bubble Etch and Spray wash in one compact unit
- **Triple tank** combines Universal, Bubble Etch and Spray wash
- Internal tanks constructed of one piece polypropylene with integral top surround
- Sturdy outer cases of moulded polyethylene with front mounted control panel
- Splash proof lid with full length mesh PCB holder
- Spray wash tanks have solenoid controlled water inlet valve

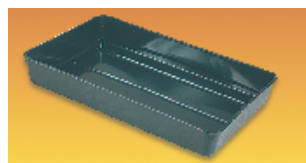
External dimensions H = 380 D = 525 W = 275 (Twin) 400 (Triple)
Tank capacity 5 Litres Operating Voltage 240Va.c. IEC socket
Max PCB size 320 260 Thermostat range +10°C to +65°C
Heater 500W

Note: It is recommended that PCB production equipment is used in conjunction with a RCCB

PCB140

Tank	Order Code	Price Each	
		1+	
Twin	157-375		
Triple	157-387		

Developing Trays



- A pack of three plastic trays
- Use for developing photo-resist boards or etching copper clad boards

L = 365, W = 230, D = 60

PCB27

3 Per Pack	Order Code	Price Per Pack		
		1+	10+	50+
	141-321			