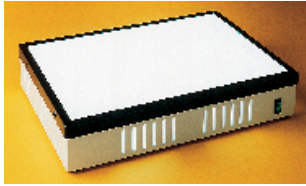


Draughting Aids

Artwork Lightboxes



- High quality lightboxes
- Glass top with opal perspex diffuser
- Mild steel case

MEGA

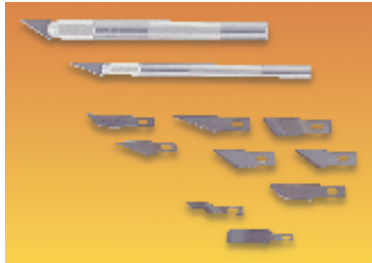
Operating voltage 240Va.c. IEC fused inlet

Size	Viewing Area	Tubes	Mftrs List No.	Order Code
A3	304 454	2 15W	LB410	157-399
A2	425 604	2 20W	LB420	157-405

PCB138

Size	Order Code	Price Each		
		1+	5+	10+
A3	157-399			
A2	157-405			

Knife Set



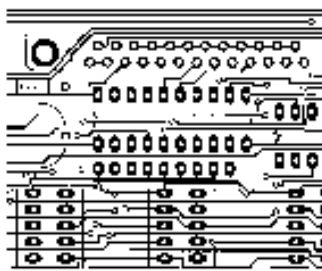
COOPER
CooperTools

Knife set containing:- XN100 light duty and XN200 medium duty knives
10 assorted blades.

PCB23

Mftrs. List No.	Order Code	Price Per Set		
		1+	4+	20+
XNS100	440-930			

Laser Film



- Specially formulated translucent film for high resolution production of PCB artwork directly from any laser printer
- 75 micron base specially coated to allow keying and fixing of toner
- For laser printers and photocopiers enabling artworks to be produced from printed originals
- Available in A4 (210 297mm) or A3 (420 297mm)

PCB115

Quantity Per Pack	Order Code	Price Per Pack			
		1+	5+	10+	20+
A4 10	895-945				
A3 10	895-969				

Cutting Mats – Self Healing

RAPESCO®



- Three layer design prevents cutting penetrating the matt
- Non slip self healing grided surface
- A3 available in translucent material for use on light boxes

PCB123

Dimensions	Order Code	Price Each		
		1+	5+	20+
A4 Grey 225 300	.719-237			
A3 Grey 300 450	.719-249			
A3 Translucent 300 450	.719-250			

Polyester Draughting Film

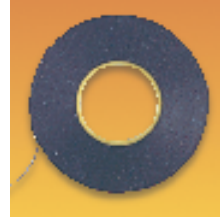


- A4 (210 297mm) or A3 (420 297mm)
- Polyester draughting film 0.003" thick
- For master artwork production

PCB17

Size	Quantity Per Pack	Order Code	Price Per Pack		
			1+	5+	20+
A4	5	141-331			
A3	10	149-044			

Draughting Tape



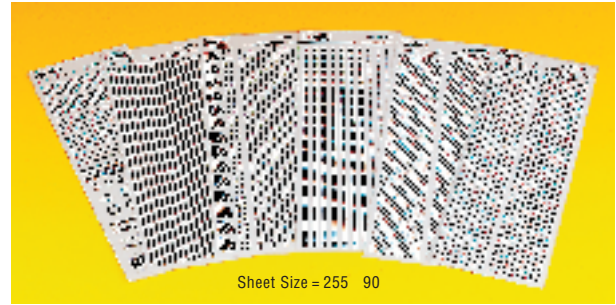
- Crepe draughting tape
- For master artwork preparation
- Use with draughting film (141-331 or 149-044)

PCB19

20m Reel Width	Order Code	Price Per Reel		
		1+	10+	50+
1.27mm (0.05")	141-338			

Etch Resistant PCB Transfers

Etch Resistant Transfers



Sheet Size = 255 90

- High quality etch resist transfers
- Use with draughting film or direct onto copper clad boards
- Wide range of popular track and pad shapes

PCB114

	Order Code	Price Per Sheet			
		1+	5+	10+	25+ 50+
Assorted Pads	895-842	8.43	7.59	6.90	6.33 6.12
Round Pads					
1.9 dia 0.45 hole / 2.1 dia 0.45 hole	895-854				
2.5 dia 0.45 hole / 2.8 dia 0.45 hole	895-866				
DIL Pads	895-878				
Straight tracks 0.5/1.0	895-880				
Straight tracks 1.5/2.0	895-891				
Tracks and Curves 0.5	895-908				
Tracks and Curves 1.0	895-910				
Tracks and Curves 1.5	895-921				
Tracks and Curves 2.0	895-933				

Spatula/Burnisher



- Plastic spatula and burnishing tool
- Use with dry transfer symbols and draughting film

PCB22

Order Code	Price Each		
	1+	10+	50+
141-325			