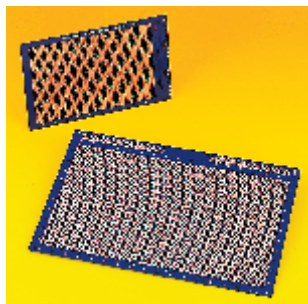


## Eurocard Prototyping Board

OKTOPAD™ single and double height with ground plane



- Single sided, single and double height
- Octagonal pads for design flexibility
- Colander ground plane for maximum screening
- Can be used with Roadrunner, wire wrapping or discrete component wiring

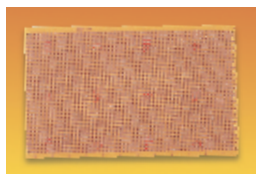
Specifications	
Material	Epoxy glass
Board thickness	1.6
Connector pattern to	DIN41612
Hole matrix	2.54 x 2.54
Hole size	1.0

PCB124

	Order Code	Price Each			
		1+	5+	10+	20+
Single height 160 x 100	967-439				
Single height 220 x 100	967-440				
Double height 160 x 233.4	967-452				
Double height 220 x 233.4	967-464				

## Eurocard Prototyping Board

Round Pad, Single Sided



- Pre-drilled prototyping board
- Manufactured in SRBP to BS4584 Section 102.7
- Flame retardant to UL94V-0
- 2.2mm pads, 1mm holes at 2.54 matrix patch
- DIN41612 connector mounting holes

L = 160, W = 100, Th = 1.6

FOR WIRING PENCIL SEE ORDER CODE 145-223 PAGE 281

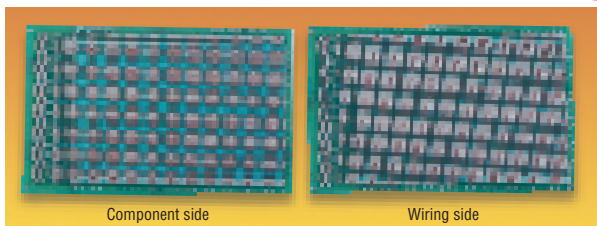
PCB89

Order Code	Price Each			
	1+	10+	20+	50+
451-060				

## Eurocard Prototyping Board

Square Pad, Plated Through Hole

RADIATR



Component side

Wiring side

L = 160, W = 100, Th = 1.6

- For use with Yamaichi 90° PCB headers
- Standard 0.1 matrix pitch square pad format
- Accommodates DIL and SIL packages
- Colander ground plane for screening

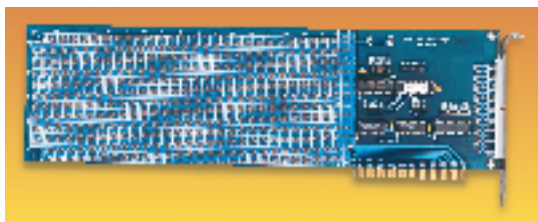
PCB68

Mfrs. List No.	Order Code	Price Each		
		1+	5+	10+
214-301709L	151-012			

## Prototyping Boards – PC

### Prototyping Card

Blue Chip Technology



- Ready configured interface
- 50 way IDC style male header
- All bus lines are accessible
- Full length PC/XT format

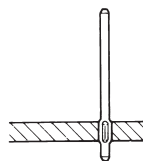
PCB100

Order Code	Price Each
178-064	

## Terminal Pins and Sockets

### Wire Wrap PCB Pins

HARWIN



- Wire wrap pins tin on nickel
- Available to fit 0.8mm or 1.0mm hole
- Supplied in strips packed in 1000s

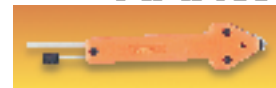
Pins	PCB Hole Dia.	Pins	Overall Length	Mfrs. List No.	Order Code
	0.8	0.635	10.5	8S252F4130	147-826
	1.0	0.711	10.5	8S282F4130	147-892
Insertion Tool				Z104402C	152-779

PCB5

Pins	PCB Hole Dia.	Quantity Per Pack	Order Code	Price Per Pack		
				1+	10+	25+
	0.8	1000	147-826			
	1.0	1000	147-892			
Insertion Tool		Each	152-779			

### Track Pins

HARWIN



Insertion tool

- Economical and fast connections between tracks on opposite sides of PCB's
- Supplied in strips easily snapped off on insertion
- Suitable for PCB thickness of 1.59mm
- Two hole signs available

Hold second pin, detach from first pin

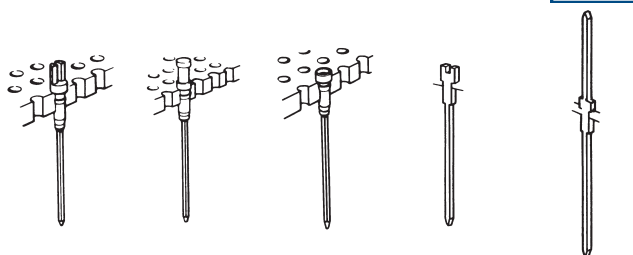
Mfrs. List No. T1559-01 = 143-738 & 148-115, T1563-01 = 143-740 & 148-116, Z1002-00 = 145-248

PCB39

Pins	PCB Hole Dia.	Quantity Per Pack	Order Code	Price Per Pack		
				1+	10+	25+
	0.84	500	143-738			
	0.84	1000	148-115			
	1.00	500	143-740			
	1.00	1000	148-116			
Insertion Tool		Each	145-248			

### Miniwrap Terminals and Sockets

VERO ELECTRONICS



Header pin	Test point pin	Socket pin	Miniwrap terminals
329-540	329-551	329-563	329-575
L = 19.79	L = 20.17	L = 17.85	L = 16.87
Hole dia. = 1.32	Hole dia. = 1.32	Hole dia. = 1.37	Hole dia. = 1.02
			L = 24.65
			Hole dia. = 1.02

Material

Header, test point, socket pins  
Miniwrap terminals

Brass to BS4249, plated gold over copper nickel finish  
Phosphor bronze to BS407 PB102, bright electro-tinned over copper flash

Post size

Minimum matrix  
Header, test point, socket pins  
Miniwrap terminals

0.68 0.64mm, diagonal 0.89mm

3.81mm (0.15")  
2.54mm (0.1")

PCB12

Pins	Quantity Per Pack	Mfrs. List No.	Order Code	Price Per Pack			
				1+	10+	25+	50+
Header	100	66 3478F	329-540				
Test point	100	66 3532J	329-551				
Socket	100	66 3472C	329-563				
Miniwrap Terminals							
Single sided	500	18 0226F	329-575				
Double sided	500	18 1657B	329-587				

Continued