

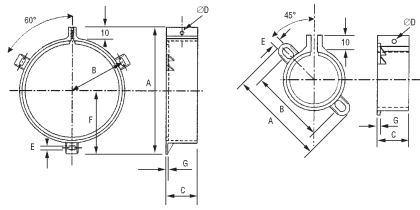
Mounting Accessories

Plastic Mounting Clips

LCR Components



- Nylon mounting clamps for can type electrolytic capacitors.
- Fully insulated two or three lug mounting.



* The diameter is approximate as it is possible for the clip to expand or compress slightly to allow for small variations in can size.

CAP166

Can Dia.*	Type	Order Code	Price Each			
			5+	50+	100+	500+
25	2 lug	.653-470				
35	2 lug	.653-482				
40	2 lug	.653-494				
44	2 lug	.653-500				
50	3 lug	.653-512				
63.5	3 lug	.653-524				
76	3 lug	.653-536				



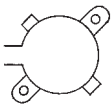
Horizontal Metal Clamps



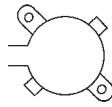
Vertical Metal Clamps



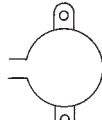
Plastic Clips



Vertical Style A



Vertical Style B



Vertical Style C

*The diameter is approximate as it is possible for the clip to expand or compress slightly to allow for small variations in can size.

CAP85

Dia.*	H	FC (Style)	Order Code	Price Each				
				1+	50+	100+	500+	1000+
Horizontal Metal Clamps								
25	22	13	306-484					
35	22	13	306-496					
Vertical Metal Clamps								
25	14	42 (A)	105-026					
25	19	35 (C)	306-514					
30	14	47 (A)	105-001					
35	18	54 (A)	105-027**					
35	19	48 (C)	306-526					
40	14	57 (A)	105-028					
45	21	59 (B)	306-540					
51	26	65 (B)	306-551					
Mtg. Hole Dia.								
Dia.*	H	Mtg. Hole Dia.	Order Code	1+	100+	1000+		
Plastic Clips								
5-6.3	7.54	2.5	146-091					
10	10.32	2.5	146-093					
12.5	13.10	2.5	146-094					
16	15.48	2.5	146-095					
18	17.07	3.7	146-096					

**No support tags on 105-027