

## Air Switching System — continued

### Foot Actuator, Light Duty3



- Foot operated air actuator for light duty applications
- Heavy gauge pressed steel base and cover
- Suitable for use with all air-operated switching elements
- Supplied with 2 metres of tubing (3mm bore, 6mm O.D.)

**herga**

H = 20, W = 63, L = 89

SW323

Mftrs. List No.	Order Code	1+	10+	25+	50+
6289-0B	.733-866				

### Foot Actuator, Heavy Duty



- Foot operated air actuator for heavy duty applications
- Aluminium base and cover
- Non-slip base and foot pad
- Supplied with 2 metres of 9mm O.D. armoured tubing
- Suitable for use with all air operated switching elements

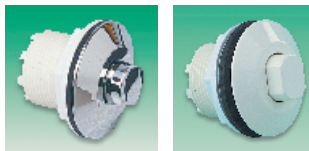
**herga**

H = 46, W = 95, L = 150

SW324

Mftrs. List No.	Order Code	1+	10+	25+	50+
6254-0B	.733-842				

### Push Button Actuator



- Push-button actuators with chrome plated or white finish
- Suitable for use with all air-operated switch elements

**herga**

Dia = 63, D (behind panel) = 43, Panel cut-out = 42 dia, Max. panel thickness = 28

SW158

Finish	Mftrs. List No.	Order Code	1+	10+	25+	50+
Chrome plated	6442-0C	.107-272				
White	6442-0W	.733-854				

### SPDT Air Switches 15A @ 250V ac



- Air-operated SPDT switches for use with actuators 107-271 and 107-272
- Momentary (press-on, release-off) and latching (press-on, press-off) versions
- Available either surface mounting with air connection at the side, or panel mounting with air connection through the base

**herga**

H = 37, W = 25, Fixing centres = 20

SW160

Momentary	Mftrs. List No.	Order Code	1+	10+	25+	50+
Side entry	6871-01	.286-151				
Base entry	6871-C0	.286-163				
Latching						
Side entry	6871-A0	.286-175				
Base entry	6871-AC	.286-187				

### Air Tubing and Accessories3



Bulkhead connector  
107-277

Tee-piece  
107-278



PVC tubing (10m reel)  
107-279

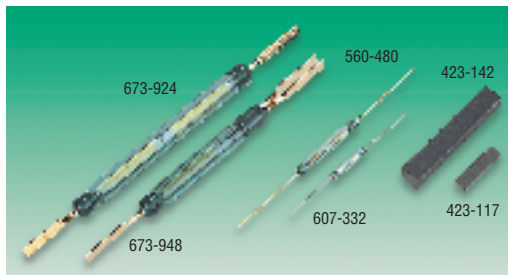
**herga**

- Flexible PVC tubing enables remote switching (3mm bore, 6mm O.D.)
- In-line/bulkhead connectors and tee pieces give extra versatility to the switch system

SW159

Mftrs. List No.	Order Code	1+	10+	25+	50+
Bulkhead connector	6419-00	.107-277			
Tee piece	6421-00	.107-278			
Tubing (10m reel)	6401-004	.107-279			

## Reed Switches & Magnets



All switches are UL approved.

Glass length, mm  
Glass diameter, mm  
Overall length, mm  
Contact material  
Contacts  
Contact rating ac or dc max. VA  
Switching current ac or dc max. A  
Breakdown voltage ac (rms) max. V  
Switching voltage dc. V  
Pull-in range: ampere turns, AT  
Order Code

Standard Size	Compact Size	Miniature Size	Tiny Size	Tiny Size, Close Differential*
52 5.4 79 Rhodium NO 80 1.3 800 250 40-45 230-121	36 5.6 69.1 Rhodium DT 60 1 1000 400 60-70 673-948	19 2.6 55 Rhodium NO 12 1 400 220 20-30 560-480	10.0 2.0 36 Rhodium NO 1 0.1 150 24 15-20 607-332	15.0 2.54 46 Rhodium NO 15 1.0 280 140 14-23 599-797
52 5.4 79 Rhodium NO 120 3 3000 1500 60-70 673-924			13.0 2.3 44.5 Rhodium NO 10 0.3 200 100 20-30 230-182	
52 5.4 79 Rhodium NO 120 3 3000 1500 80-90 673-936			14.1 2.3 55 Rhodium NO 10 0.5 250 100 20-30 560-492	
			14.0 2.54 56.4 Rhodium DT 3 0.2 200 30 20-30 673-950	

\*Close Differential reed switch has drop-out typically 80% of pull-in sensitivity, e.g. if pull-in is at 15AT, drop-out is typically 12AT.

#### Operating Magnets

Dimensions (mm):	L	W	D	Order Code
	12.70	3.17	1.57	423-117
	27.94	4.75	4.75	423-129
	19.05	3.17	3.17	423-130
	25.40	6.35	6.35	423-142

SW258

Mftrs. List No.	Order Code	1+	50+	200+	1000+
<b>Standard Size</b>					
2501-1525-040	230-121				
2502-1513-060	673-924				
2502-1513-080	673-936				
<b>Compact Size</b>					
2502-1917-060	673-948				
<b>Miniature Size</b>					
2502-2722-023	560-480				
<b>Tiny Size</b>					
8601-0211-015	607-332				
8602-0221-020	230-182				
2502-2322-020	560-492				
8602-0551-020	673-950				
<b>Tiny Size, Close Differential</b>					
RI-26AA	599-797				
<b>Operating Magnets</b>					
RSH01	423-117				
RSH32	423-129				
RSH33	423-130				
RSH34	423-142				