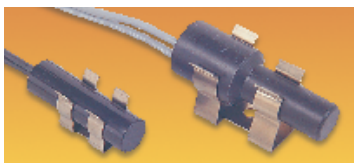


Tilt Sensors — continued

Insulated Steel



170-853 L = 46, Dia = 13.5, Lead length = 150
170-854 L = 60.3, Dia = 21.4, Lead length = 150

- Steel cased tilt switches insulated overall with PVC giving compact size and high structural strength
- Designed for horizontal mounting
- High current switching capability for direct motor control
- Use for tilt sensing, level control, inertia or rotation sensing and in security applications
- Fast switch action with no bounce

The mercury-to-mercury contacts close when the switch is tilted below horizontal. The switches have silicone rubber leads and are supplied with mounting clips.

Min Tilt from Horiz.	Rating 240V ac	Rating 240V dc	Order Code
16°	13A	8A	170-853
13°	19A	10A	170-854

WARNING: THESE SWITCHES SHOULD NOT BE OPENED AS THEY CONTAIN MERCURY, A TOXIC SUBSTANCE

SEN55X

Contact Rating	Mfrs. List No.	Order Code	1+	25+	100+	Price Each
13A	S1016	.170-853				
19A	S1017	.170-854				

Tip-Over Switches



170-888
Flange dia. = 24, Body dia. = 19.5
H = 9.2, (22.1 overall)
W(overall incl. terminals) = 31.8



607-241
Body dia. = 28, H = 29
Fixing centres 42, Dia. = 4.2

Hermetically sealed mercury tip-over switches designed for a variety of level sensitive equipment. Switch contacts are closed when vertical as shown and open when tilted in any direction.

170-888: Nickel plated steel bodied switch has contacts which open at 25° to 45° from vertical. Connection by 6.35mm spade terminals.

607-241: Switch in polypropylene housing, contacts are closed and open when tilted in any direction 35° from vertical. Fixing holes allow easy fitting. Fitted with silicon rubber coated tin/copper leads.

Contact Rating	Contact Resistance	Order Code
15A @ 110V ac/50V dc, 15A @240V ac	1 Ω typ.	170-888
15A @ 240V ac	0.3 Ω max.	607-241

WARNING: THESE SWITCHES SHOULD NOT BE OPENED AS THEY CONTAIN MERCURY, A TOXIC SUBSTANCE

SEN178X

Mfrs. List No.	Order Code	1+	25+	100+	250+	Price Each
CM15-T5	170-888					
S1116	607-241					

Tip-Over Switch, Non-Mercury



Switching voltage 60V ac
Switching current 0.25A
Switching capacity 3VA
Operating angle 40°±15°

- Hermetically sealed switch
- Switch contacts are closed when vertical as shown and open when tilted in any direction
- Two locating holes for easy fitting
- Housing sealed to IP65
- Non-mercury contacts

H = 16mm, L = 7.6, Body dia. = 18mm, Fixing centres = 25mm, Hole dia. = 3.5mm

Contact resistance	Operating temperature	Case material
6mΩ	-20°C to +70°C	Polypropylene

Mfrs. List No.	Order Code	1+	25+	100+	250+	Price Each
TTS60/15	309-4807					

SEN373

Tip-Over Switch, Non-Mercury



- Hermetically sealed switch
- Switch contacts are closed when vertical as shown and open when tilted in any direction
- Non-mercury contacts

L = 7.6, Body dia. = 5.7mm, Leads: L = 8.6, Dia. = 0.5

Switching voltage	Switching current	Switching capacity	Operating angle	Contact resistance	Operating temperature	Case material
60V ac	0.25A	3VA	60°±10°	5mΩ	-37°C to +100°C	Steel Tin Plated

SEN374

Mfrs. List No.	Order Code	1+	50+	100+	250+	Price Each
CW1260	309-4790					

Tip-Over/Jitter Switch



Miniature mercury switch with tin plated steel body. Contacts are closed in vertical position, opening when tipped over. Switch may also be used to sense movement or vibration.

Contacts 'must open' angle	Contacts 'must close' angle	Contact rating	Contact resistance
60° from vertical	30° from vertical	0.5A, 120Vac	3.0Ω

Flange dia. = 9.5, Body dia. = 8.2,
H = 9.5, Pin L = 11.8, Pin spacing = 2.0

WARNING: THIS SWITCH SHOULD NOT BE OPENED AS IT CONTAINS MERCURY A TOXIC SUBSTANCE

SEN105

Mfrs. List No.	Order Code	1+	25+	100+	250+	Price Each
CM1421-0	723-745					

Motion Sensors

Vibration/Motion Switches



540-626
L = 9.5, Dia. = 8.2, Leads L = 11.2,
Dia. = 1, Lead spacing = 5



607-253
L = 7.1, Dia. = 4.6, Leads
L = 7.5, Dia.1,
Lead spacing = 6.3

Hermetically sealed switches which make contact when subject to vibration or motion.

540-626: A non-position sensitive switch whose contacts are open when at rest.

607-253: This switch is position sensitive and will be either open or closed depending on the centre electrode. Sensitivity can be varied by the position of the switch.

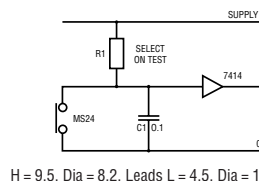
Contact Rating	Temperature Range	Order Code
0.75A @ 240V ac, 1A @ 110 V ac	-40°C to +260°C	540-626
0.1A @ 240V ac	-40°C to +260°C	607-253

WARNING: THESE SWITCHES SHOULD NOT BE OPENED AS THEY CONTAIN MERCURY, A TOXIC SUBSTANCE

SEN174X

Mfrs. List No.	Order Code	1+	25+	100+	250+	1000+	Price Each
CM4400-1	.540-626						
CM1800-1	.607-253						

Vibration/Movement Switch – High Sensitivity Non-mercury



H = 9.5, Dia = 8.2, Leads L = 4.5, Dia = 1 Lead spacing = 4.7

- Very high sensitivity detection of movement or vibration
- Non-position sensitive, offers a similar level of sensitivity whatever its position
- Long life and high reliability in a wide range of environments
- Ideal for anti-tamper and interference detection

A patented design non-mercury switch in hermetically sealed body with gold contacts. The contacts in their normal mode can be closed or open. When subjected to any small movement or vibration, the contacts will vibrate on and off repeatedly. The output may be damped if less sensitivity is required.

Applications: Movement detection – starting or running of motors, process equipment, detecting unusual levels of movement or vibration, detecting intrusion into control panels and security systems, anti-theft mobile systems in cars, laptop computers.

Switching voltage, max.	Switching current, max.	Contact style	Contact resistance, initial	Operating temperature	Case material
24V ac	24mA	change of state	2.0Ω	-37°C to +100°C	steel, gold plated