

Sirens - Motor Driven — continued

Master Blaster - 127dB



H = 170, W = 113, D = 140

- Sound output 127dB at one metre
- Mains operated with built in 12V trigger relay
- Weatherproof one part ABS moulded body
- Separate mounting bracket for easy installation
- Prewired with 1m of cables

Supply Voltage 240V ac
 Trigger relay 12V dc
 Trigger relay 12V dc
 Siren current Running = 1.2 A
 Starting = 5.0 A
 Continuous
 Rating
 Run up time 0.5 seconds

Mftrs. List No XMB 240

ssw303

Price Each

Order Code	1+	5+	10+	25+
Master Blaster 967-476				

Weatherproof Siren – 'Mono 72' – 240V ac



- Weatherproof motor driven siren
- Used for security, evacuation, process alarms etc.
- May be pulsed via timer to produce wailing note
- Rugged construction for hostile environments
- Grey stove enamel finish

L = 180, Dia. = 95

Current 1A @ 110V, 0.46A @ 240V
 Output 116dB @ 1m ±3dB, 630m range

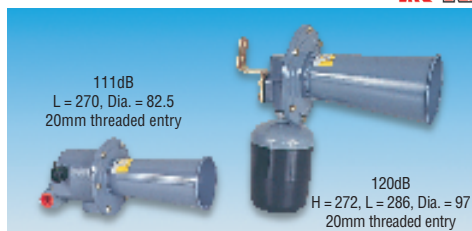
Frequency 1800Hz
 Rating Continuous
 Operating temperature -30°C to +45°C

ssw109X

Price Each

Supply voltage	Order Code	1+	5+	10+
110V ac	.474-745†			
240V ac	.474-751†			
† Subject to design change				

Motor Driven – 'Klaxon' – Hooters



111dB
 L = 270, Dia. = 82.5
 20mm threaded entry

120dB
 H = 272, L = 286, Dia. = 97
 20mm threaded entry

- High power motor driven hooters with 'Klaxon' sound
- Used in areas of high ambient noise
- Used for start/stop, time signalling etc.
- Grey stove enamel finish

	111dB	120dB
Current	0.5A @ 110V, 0.33A @ 240V	0.84A @ 110V, 0.76A @ 240V
Output	111dB @ 1m ±3dB, 350m range	120dB @ 1m ±3dB, 1000m range
Frequency	470Hz	470Hz
Rating	1 min	2 min
Operating temperature	-20°C to +40°C	-20°C to +45°C

ssw108X

Price Each

111dB output	Order Code	1+	5+	10+
110V, 50/60Hz	.474-782			
240V, 50/60Hz	.474-794			
120dB output				
110V, 50/60Hz	474-800			
240V, 50/60Hz	474-812			

Alarm Bells

Centrifugal Motorised Bell — 24V dc

FULLEON



- Centrifugal motorised bell for fire alarm signalling
- 3 sizes, smallest suitable for hotel bedrooms where 75dB (A) bedhead sound level is required
- Low current consumption
- 4 way terminal block for loop wiring
- Terminal capacity 2.5mm²
- Red steel gong
- Black moulded polycarbonate base

Diameter	Height	Nom. Operating Voltage	Voltage Range	Current @ Nom. Voltage	Nom. Output Level @ 1m	Order Code
102 (4")	63	24V dc	18 to 30V	20mA	84dB(A)	331-0334
152 (6")	63	24V dc	18 to 30V	25mA	93/95dB(A)	331-0346
203 (8")	67	24V dc	18 to 30V	28mA	95/97dB(A)	331-0358

Mftrs. List No. CFB4D24 = 331-0334, CFB6D24 = 331-0346, CFB8D24 = 331-0358

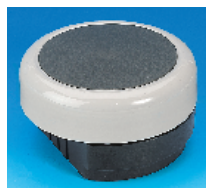
SSW331

Price Each

Diameter	Order Code	1+	10+	25+	50+	100+
102 (4")	.331-0334					
152 (6")	.331-0346					
203 (8")	.331-0358					

Electronic Solenoid Bell — 240VAC

FULLEON



- Electronically controlled solenoid bell for intruder, fire and other alarm signalling
- Grey steel gong
- Black moulded polycarbonate base
- 4 way terminal block for loop wiring
- Flush or surface mounting
- Sealed to IP55

Operating voltage 200 to 250V ac
 Current 25mA

Sound output @ 1m 93 to 95dB(A)
 Operating temperature -10°C to +55°C

Mftrs. List No. FB/250/G/W

SSW329

Price Each

Colour	Order Code	1+	10+	25+	50+	100+
Grey	.331-0322					

Alarm Bells

Low Voltage dc - 9V to 15V and 18V to 30V



H = 155, D = 85,
 Dia. = 155 (gong), 150 (base),
 Fixing centres = 50 and 60

Solenoid driven, electronically controlled alarm bells producing a loud clear ring with the advantage of a low current consumption and no contacts to wear out. Suitable for warning and alarm applications. The 9V to 15V version has a grey gong, where as the 18V to 30V version which complies with the requirements of BS5839 is finished in Red.

The back plate is moulded in vandal-resistant polycarbonate and houses the solenoid movement and terminal block.

Note: When mounting the bell externally it should be used with a bell enclosure as the bell is not weather resistant.

Voltage	Range	Sound Level @ 1 metre	Current	Colour	Order Code
12V	9V to 15V	96dB (A)	0.06A @ 12V	Grey	107-843
24V	18V to 30V	96dB (A)	0.03A @ 24V	Red	107-844

ssw45X

Price Each

Voltage	Order Code	1+	10+	25+
12V (Grey)	.107-843			
24V (Red)	.107-844			

New Products

For more information on new products check out the New Product Guide.