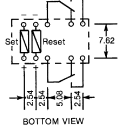


REL078

COIL		Price Each					
Volts	Ω	Order Code	1+	20+	100+	250+	500+
DPCO – G62-2 Series							
5V dc	178	.310-3493					
12V dc	1028	.310-3500					
24V dc	2880	.310-3511					

High Sensitivity – G5A/G5AK Series

Latching/Non-latching



- DPCO bifurcated contacts
- **BT Type 53** approved
- Low 85mW coil pick up power
- Permanent magnet construction, coil polarity must be ordered

L = 16.0, W = 9.9, H = 8.0

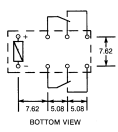
For G5A omit reset coil and pins.

Contact arrangement	DPCO	Operate/Release	5ms
Contact rating	1A @ 30V dc	Coil operating range	Standard 70 – 160%
	0.5A @ 120V dc		Latching 80 – 110%
Contact material	Gold clad silver palladium	Temperature range	-40°C to +70°C
Coil consumption	200mW		

rel107

British Telecom		Price Each						
Code	Volts	Ω	Order Code	1+	20+	100+	250+	500+
DPCO – G5A-234P-53 Series								
53/1	4.5V dc	101	.178-441					
53/3	12V dc	720	.178-442					
53/5	24V dc	2880	.178-443					
Latching DPCO – G5AK-234P Series								
—	5V dc	101+101	.178-444					
—	12V dc	720+720	.178-445					
—	24V dc	2880+2880	.178-446					

High Isolation – G6A-BS Series



- DPCO contacts
- Approved to **BABT BS6301**
- Fully sealed
- 2KVrms isolation coil/contact and 2.5mm creepage/clearance
- Suitable for telecoms and office equipment

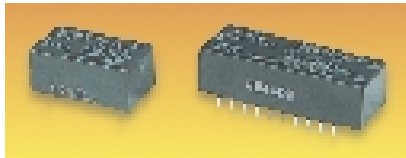
L = 20.2, W = 10.1, H = 8.0

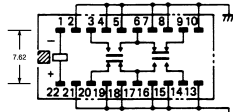
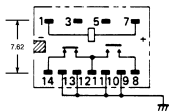
Contact arrangement	DPCO	Coil consumption	280mW
Contact rating	0.3A @ 110V ac	Operate/Release	5ms/3ms
	1A @ 60V dc	Coil operating range	70 – 150%
Contact material	Gold overlay silver palladium.	Temperature range	-10°C to +70°C

REL080

COIL		Price Each					
Volts	Ω	Order Code	1+	20+	100+	250+	500+
DPCO – G6A-234P-BS Series							
4.5V dc	72	.176-315					
12V dc	514	.176-316					
24V dc	2057	.176-317					

UHF/VHF Signal – G5Y Series


G5Y-1
 L = 20.5, W = 11.5, H = 9.0
 Pins on 2.54 pitch

G5Y-254P-1
 L = 32.5, W = 12.5, H = 9.0
 Pins on 2.54 pitch


- SPCO and DPCO contacts
- Suitable for UHF/VHF signal switching 1μW to 15W
- Typical insertion loss of less than 0.25dB @900MHz
- Low 110mW coil pick up power and VSWR of 1.38(typ) @900MHz
- Fully sealed
- Correct coil polarity must be observed

Contact arrangement	SPCO/DPCO	Isolation	60dB @ 900 MHz
Contact rating	0.01A @ 24V ac/dc	Operate/Release	10ms/5ms
Contact material	Gold plated copper alloy	Coil operating range	85 – 110%
VSWR	1.8 max. @ 900MHz	Temperature range	-30°C to +70°C
Coil consumption	300mW-G5Y-1 360mW-G5Y-254P-1		

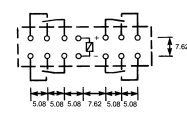
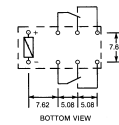
COIL		Price Each					
Volts	Ω	Order Code	1+	20+	100+	250+	500+
SPCO – G5Y-1 Series							
5V dc	83	.257-114					
12V dc	480	.257-126					
24V dc	1920	.257-138					
DPCO – G5Y-254P-1 Series							
5V dc	69.5	.257-140					
12V dc	400	.257-151					
24V dc	1600	.257-163					

High Sensitivity – G6A Series



G6A-234P, L = 20.2, W = 10.1 H = 8.0

G6A-434P, L = 35.4, W = 10.1, H = 8.0



- DPCO and 4PCO bifurcated contacts
- Fully sealed, suitable for immersion cleaning
- Satisfies **CCIT** lighting test requirement
- Permanent magnet construction, coil polarity must be observed

Contact arrangement	DPCO/4PCO	Coil consumption:	G6A-234P	200mW
Contact rating	0.3A @ 110V ac		G6A-434P	360mW
	1A @ 60V dc	Operate/Release:	G6A-234P	5ms/5ms
Contact material	Gold clad silver palladium.		G6A-434P	7ms/5ms
Coil operating range	70 – 150%	Temperature range	-25°C to +70°C	

REL030

COIL		Price Each					
Volts	Ω	Order Code	1+	20+	100+	250+	500+
DPCO – G6A-234P Series							
4.5V dc	101	.175-031					
12V dc	720	.175-032					
24V dc	2880	.175-033					
48V dc	11520	.175-034					
4PCO – G6A-434P Series							
5V dc	69	.176-319					
12V dc	400	.176-320					
24V dc	1600	.176-321					

Relay - G6B

5A Subminiature Type: 20(L) x 10(W) x 10(H) mm


- Low power consumption of just 200mW
- Approved to **UL** and **CSA**



Coil Rating:		
Rated voltage	24Vdc	
Rated current	8.3mA	
Coil resistance	2,880Ω	
Coil inductance (armature OFF)	4.9H	
(armature ON)	4.1H	
Power consumption	approx. 200mW	
Contact resistance	30mΩ max.	
Operate (set) time	10ms max.	
Release (reset) time	single-side stable types: 10ms max Latching types: 10ms max	
Insulation resistance	1,000MΩ min (at 500Vdc)	
Mechanical life	50,000,000 operation min	
Electrical life	100,000 operation min	
Operating temperature	-25°C to +70°C	
Order Code	357-5299	357-5305
Contact form	SPST-NO	SPST-NO
Contact Rating	5A @250Vac 5A @30Vdc	8A @250Vac 8A @30Vdc
Rated carry current	5A	8A
Max switching voltage	380Vac, 125Vdc	380Vac, 125Vdc
Max switching capacity	1,250VA, 150W	2,000VA, 150W

REL99/SI

Mfrs. List No.	Order Code	1+	5+	10+
G6B-1114P-FD-US DC24	357-5299			
G6B-1174P-FD-US DC24	357-5305			