

Box Spanner — 1467



A box spanner is available for fixing 1465 slotted nuts, 1466 threaded bushes, and knobs to 8 and 10mm spindles.
Mfrs. List No 048-1000.

RADIATR

stc41

Order Code	Price Each		
	1+	25+	100+
321-357			

H72

Brass Spindle Coupling 1/4" Spindle Fitting



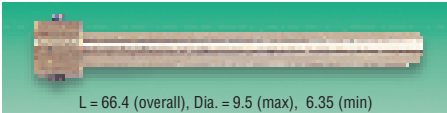
- Precision turned rod
- For extending all types of 1/4" spindles
- Four flush fitting grub screws

L = 15.2
Dia. = 9.5

Order Code	Price Each		
	1+	50+	250+
101-602			

H73

Brass Spindle Extension 1/4" Spindle Fitting



L = 66.4 (overall), Dia. = 9.5 (max), 6.35 (min)

The spindle retainer is fitted with 2 6BA screws.

Order Code	Price Each		
	1+	50+	250+
101-603			

H74

Ball Drive 1/4" Spindle Fitting



Simple and powerful epicyclic friction drive. Ratio 6:1.

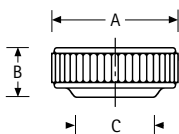
L = 46.1 (overall), 28.6 (shaft), Dia. = 27.8

Order Code	Price Each		
	1+	50+	250+
101-601			

H75

Knobs (Socket Head Cap Screw Fitting)

Knurled, Self-Assembly



RENKOL

- Simple assembly method
- No special tools or glue necessary
- Instant thumb knob ready to use
- Fits on to the head of a socket head screw

A	B	C	To Fit Socket Head Cap Screw	Mfrs. List No.	Order Code
10	4	8	M3	SSK1	700-7152
13	5	10	M4	SSK2	700-7164
16	6	12	M5	SSK3	700-7176
19	8	14	M6	SSK4	700-7188
26	8	14	M6	SSK5	700-7190
26	10	16	M8	SSK6	700-7206

Order Multiple=10

To Fit Socket Head Cap Screw	Order Code	10+	30+	60+	120+	240+	500+
M3	700-7152						
M4	700-7164						
M5	700-7176						
M6	700-7188						
M6	700-7190						
M8	700-7206						

Handles

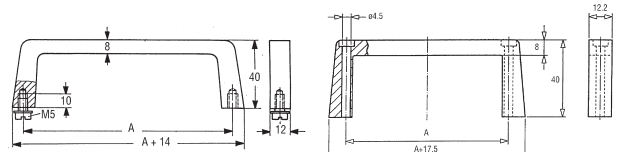
Aluminium



MENTOR

- Concealed or through leg fixing
- Anodised aluminium natural or black (concealed fixing only)
- Clean defined design
- Suitable for heavy loads
- Supplied with fixings

Carrying capacity 75kg



Concealed fixing

Through handle fixing

H309

Order Multiple=2

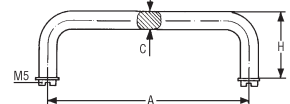
Colour	Fixing Centres (A)	Mfrs. List No.	Order Code	2+	10+	20+	40+
Concealed Fixing							
Black	55	3268.1103	305-8130				
Black	88	3268.1203	305-8141				
Black	120	3268.1303	305-8153				
Black	180	3268.1403	305-8165				
Natural	55	268.1	305-8177				
Natural	88	268.2	305-8189				
Natural	120	268.3	305-8190				
Natural	180	268.4	305-8219				
Natural	235	268.5	305-8220				
Through Leg Fixing							
Natural	40	3268.1111	305-8232				
Natural	84.5	3268.1112	305-8244				
Natural	129	3268.1113	305-8256				
Natural	173.5	3268.1114	305-8268				

Aluminium

MENTOR



- Flat style instrument handles
- Durable anodised finish
- Supplied with M5 fixing screws and washers



A	C	H	Weight	Mfrs List No.	Order Code
55	8	29	25g	277.1	861-194
88	8	29	35g	277.2	861-200
100	8	39	45g	277.6	861-212
120	10	39	75g	277.3	861-224
180	10	39	100g	277.4	861-236
235	10	39	125g	277.5	861-248

H222

Order Multiple=2

Fixing Centres	Order Code	2+	10+	20+	40+
55	861-194				
88	861-200				
100	861-212				
120	861-224				
180	861-236				
235	861-248				

continued