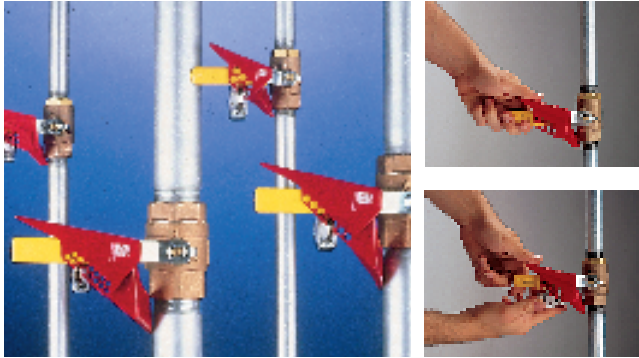


Lockout/Tagout — continued

Ball Valve Lockout Devices

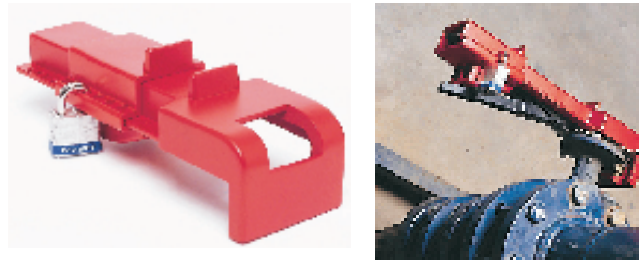


- Ideal closure method for ball valves
- Allows you to monitor virtually any valve lever

HS912

Size of Lever	Lock Shackle	Order Code	Price Each		
			1+	5+	10+
6-25mm	7mm	328-3446			
6-25mm	9.5mm	712-3681			
32-76mm	7mm	712-3693			
32-76mm	9.5mm	712-3700			

Butterfly Valve Lockouts



- Secures butterfly valves efficiently
- Non-conductive, high resistance to solvent and other chemicals
- Resistant to extreme temperature changes (-46°C to 183°C)

HS913

Colour	Order Code	Price Each		
		1+	5+	10+
Red	326-0320			
Yellow	326-0331			
Green	326-0343			
Blue	326-0355			

Cable Lockout Device

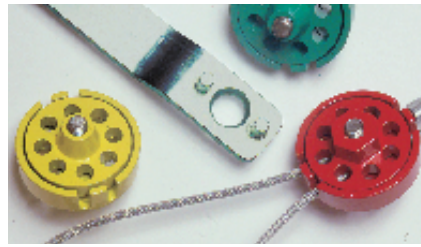


- Can lock out multiple valves
- Lighter and easier to use than chains, cost effective too

HS914

	Order Code	Price Each		
		1+	5+	10+
System & 1.8m cable	326-0392			
Extra 2.4m cable	326-0409			
Extra 3m cable	326-0410			

Pro-Lock



- Stainless steel construction, PVC coated for rust protection
- Standard secured with a 17mm spanner
- Standard PLUS, fitted with a security nut, requires unique tool
- 50mm diameter with 3.2mm PVC coated stainless steel wire

HS915

	Order Code	Price Each		
		1+	5+	10+
Standard	326-0367			
Standard Plus	326-0379			
Tool for Plus	326-0380			

Valve Lockout Starter Kit



- The perfect way to secure pipe valves

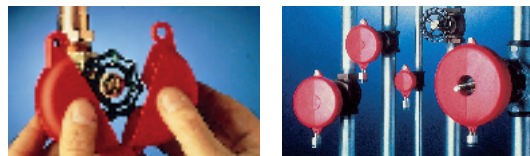
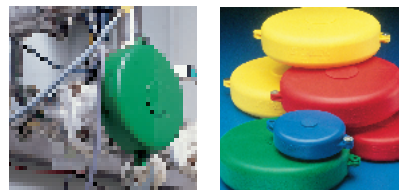
Kit Contains:

- 2x 25-64mm Lockout devices for gate valves
- 2x64-127mm Lockout devices for gate valves
- 2 x Small ball valve devices
- 2 x Large ball valve devices
- 5 x Pre-printed, printable safety lockout hasps in Red
- 2 x blue padlocks (51mm shackle width)
- 2 x blue padlocks (51mm shackle width)
- 10 x lockout labels
- 1 x red lockout carrying bag

HS916

Colour	Order Code	Price Each		
		1+	5+	10+
Red	326-0574			

Gate Valve Lockouts



- Easy and ideal way to lock out single gate valves
- Available in 5 sizes for handwheels with diameter from 2.5cm up to 32cm
- Durable polypropylene, resistant to chemicals, heat and cold
- Suitable also for 'rising' gate valves (after removing centre)
- Colours denote activity eg Red = locked, Green = open
- For hand wheels larger than 320mm please see cable lockouts

HS917