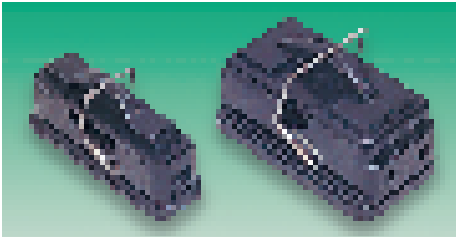


## Fuse Boxes

**Belling Lee**



L1045C3 H = 34.2, W = 61.9, D = 20.6  
Fixing centres = 9.5 4.0 dia.  
L1033C4 H = 35.7, W = 35.7, D = 63.5  
Fixing centres = 13.5 4 dia.

Moulded in black phenolic, the fuses are held in the lid and automatically isolated from the circuit when the lid is raised. Screw terminations.

Rating 10A Operating temperature -40°C to +85°C  
Breakdown voltage 4kV dc (to chassis)

Mfrs. List No. L1045/C3 = 319-650, L1033/C4 = 319-661

FUS78X

|                 | Order Code | 1+ | 25+ | 100+ | 250+ |
|-----------------|------------|----|-----|------|------|
| Single fuse box | 319-650    |    |     |      |      |
| Double fuse box | 319-661    |    |     |      |      |

## Fuse Kit

### 20x5mm Fuse Kit

**Bussmann**



- A range of 18, 20 x 5mm quick blow and antisurge fuses supplied in a compartment storage box.
- The kit can be restocked when required.

H = 50, W = 260, D = 165

Kit contains 10 of each of the following:

|                     |              |                                   |
|---------------------|--------------|-----------------------------------|
| Antisurge (ceramic) | S 505 Series | 2A, 3.15A, 5A                     |
| Quick blow (glass)  | S 500 Series | 500mA, 1A, 2A, 3.15A, 5A, 6.3A    |
| Antisurge (glass)   | S 504 Series | 315mA, 500mA, 630mA               |
| Antisurge (glass)   | S 506 Series | 500mA, 1A, 1.25A, 1.6A, 2A, 3.15A |

FUS192X

|            | Order Code | 1+ | 5+ | 10+ |
|------------|------------|----|----|-----|
| 20x5mm Kit | 579-518    |    |    |     |

### Assorted Fuse Kit

**Bussmann**



A range of 18 quick blow, antisurge and mains fuses in 20mm, 1" and 1 1/4" lengths supplied in an 18 compartment storage box. The kit can be restocked when required.

H = 50, W = 260, D = 165

Kit contains 10 each of the following:

- 20 5mm quick blow fuses (glass) — 1A, 2A, 3.15A, 5A.
- 20 5mm antisurge fuses (glass) — 1A, 2A, 3.15A.
- 1" mains quick blow fuses (ceramic) — 1A, 2A, 3A, 5A, 13A.
- 1 1/4" quick blow fuses (glass) — 1A, 2A, 5A, 10A, 15A.
- 1 1/4" antisurge fuses (ceramic) — 10A.

Mfrs. List No. Fuse Kit E

FUS198X

|                   | Order Code | 1+ | 5+ | 10+ |
|-------------------|------------|----|----|-----|
| Assorted Fuse Kit | 151-655    |    |    |     |

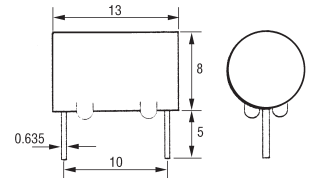
## Hazardous Environment Fuses

### Sub-Miniature - BASEEFA Approved Quick Blow (F)

**Littelfuse**



664-686



Hermetically sealed within a nylon body, this range of quick blow fuses are approved to **BASEEFA BS5501** and **EN50014-39**.

Voltage rating (Vn) 125V ac/dc

Breaking Capacity 50A@ 125V ac  
300A @ 125V dc

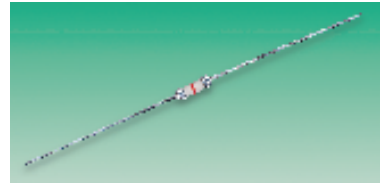
Mfrs. List No. 259 + Rating

FUS263X

| Order Multiple=10 | Order Code | Price Each |     |      |      |
|-------------------|------------|------------|-----|------|------|
|                   |            | 10+        | 50+ | 100+ | 250+ |
| Rating            |            |            |     |      |      |
| 62mA              | 664-625    |            |     |      |      |
| 125mA             | 664-637    |            |     |      |      |
| 250mA             | 664-649    |            |     |      |      |
| 375mA             | 664-650    |            |     |      |      |
| 500mA             | 664-662    |            |     |      |      |
| 750mA             | 664-674    |            |     |      |      |
| 1A                | 664-686    |            |     |      |      |

### Barrier Network Fuses

**Littelfuse**



L = 8.4, Dia = 3.02 Lead dia. = 0.6

Axial barrier network fuses featuring high break capacity in a compact size. Designed for industrial applications in barrier circuits.

Voltage rating 250V ac/dc

Breaking capacity 4000A

Mfrs. List No. 242 + Rating

FUS267

| Order Multiple=5 | Order Code | Price Each |     |     |      |
|------------------|------------|------------|-----|-----|------|
|                  |            | 5+         | 25+ | 50+ | 100+ |
| Rating           |            |            |     |     |      |
| 50mA             | 665-009    |            |     |     |      |
| 80mA             | 665-010    |            |     |     |      |
| 100mA            | 665-022    |            |     |     |      |
| 160mA            | 665-034    |            |     |     |      |
| 200mA            | 665-046    |            |     |     |      |
| 250mA            | 665-058    |            |     |     |      |

## Wire Ended Circuit Protectors

### Fast Acting 491 Series

**Littelfuse**



Lead dia = 0.64 L = 7.62 Dia = 2.62

- Fast acting protection from excess current
- Designed for protection of circuits on the secondary side of the transformer

Voltage rating 60 V

Mfrs. List No. 491 + Rating

FUS319

| Order Multiple=10 | Order Code | Price Each |     |      |      |      |
|-------------------|------------|------------|-----|------|------|------|
|                   |            | 10+        | 50+ | 100+ | 250+ | 500+ |
| Rating            |            |            |     |      |      |      |
| 250mA             | 975-795    |            |     |      |      |      |
| 315mA             | 975-801    |            |     |      |      |      |
| 400mA             | 975-813    |            |     |      |      |      |
| 500mA             | 975-825    |            |     |      |      |      |
| 630mA             | 975-837    |            |     |      |      |      |
| 750mA             | 975-849    |            |     |      |      |      |
| 800mA             | 975-850    |            |     |      |      |      |
| 1A                | 975-862    |            |     |      |      |      |
| 1.25A             | 975-874    |            |     |      |      |      |
| 1.6A              | 975-886    |            |     |      |      |      |
| 2A                | 975-898    |            |     |      |      |      |
| 2.5A              | 975-904    |            |     |      |      |      |
| 3A                | 975-916    |            |     |      |      |      |
| 3.15A             | 975-928    |            |     |      |      |      |
| 4A                | 975-930    |            |     |      |      |      |
| 5A                | 975-941    |            |     |      |      |      |