

Riveting Systems — continued

Riveter



- Industrial hand tool for placing up to 3/16" (4.8mm) diameter rivets.

SPIRALUX

H40X

Mfrs. List No.	Order Code	Price Each		
		1+	5+	10+
2750	320-183			

'Avex' Rivets



- Magnesium aluminium alloy rivets
- Phosphated steel stems

AVDEL

H41

Nominal Diameter	*Drill size		*Grip range		Mfrs. List No.	Order Code
	mm	Inches	mm	inches		
3.2	3/32	3.5	29	.79 to 4.8	.031 to .187	1661-0410 320-195
4.0	5/32	4.2	19	1.2 to 6.4	.046 to .250	1661-0512 320-201
4.8	3/16	5.1	8	1.6 to 6.4	.062 to .250	1661-0613 320-213
4.8	3/16	5.1	8	4.7 to 11.1	.187 to .437	1661-0619 320-225

*Grip ranges and hole sizes are for guidance only. The grip range will vary depending on the type of material.

Dia.	Grip range	Order Code	Price Per Pack			
			1+	5+	10+	25+
3.2	0.79 to 4.8	.320-195				
4.0	1.2 to 6.4	.320-201				
4.8	1.6 to 6.4	.320-213				
4.8	4.7 to 11.1	.320-225				

Rivets



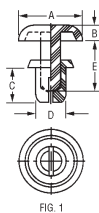
- Domed head blind rivet
- Wide range of sizes available
- Packed in convenient colour-coded boxes for ease of stockholding and handling
- Manufactured to DIN7337



H267

Dia.	Grip Range	Order Code	Price Per Box					
			1+	5+	10+	25+	50+	100+
Steel, Zinc Plated								
3.2	1.0-3.0	713-8659						
3.2	3.0-6.0	713-8660						
3.2	7.0-9.0	713-8672						
4.0	0.5-2.5	713-8684						
4.0	4.5-6.5	713-8696						
4.0	6.0-8.5	713-8702						
Aluminium								
3.2	1.0-3.0	713-4587						
3.2	3.0-6.0	713-4599						
3.2	7.0-9.0	713-4605						
4.0	0.5-2.5	713-4617						
4.0	4.5-6.5	713-4629						
4.0	6.0-8.5	713-4630						
50 Per Box								
4.8	1.0-3.0	713-4642						
4.8	4.0-6.0	713-4654						
4.8	6.0-8.0	713-4666						
500 Per Pack								
3.2	1.5-3.5	713-4460						
3.2	3.5-5.5	713-4472						
3.2	5.5-7.0	713-4484						
3.2	7.0-9.0	713-4496						

Snap Rivets, Plastic



- No installation tool required
- To install, press head, which expands rivet base, locking it into position
- Manufactured in Nylon 6
- Available in Black or White

Ref.	Hole ØG	Grip Range	A	B	C	D	E	Fig.
1 & 22	2.6-2.7	1.0-2.0	5	1.4	3.2	2.6	4.5	1
2 & 23	2.6-2.7	2.0-3.0	5	1.4	4.2	2.6	4.5	1
3 & 24	2.6-2.7	2.7-3.6	5	1.4	4.8	2.6	6.1	1
4 & 25	2.6-2.7	3.4-4.3	5	1.4	5.5	2.6	6.1	1
5 & 26	3.1-3.2	1.0-2.0	6.4	1.6	3.5	3	5.1	1
6 & 27	3.1-3.2	2.0-3.0	6.4	1.6	4.5	3	6.1	1
7 & 28	3.1-3.2	3.0-4.0	6.4	1.6	5.5	3	6.1	1
8 & 29	3.1-3.2	4.0-5.0	6.4	1.6	6.5	3	7.1	1
9 & 30	3.1-3.2	5.0-6.0	6.4	1.6	7.5	3	9	1
10 & 31	3.1-3.2	5.5-6.5	6.4	1.6	8	3	9	1
11 & 32	3.6-3.7	1.2-2.1	6.4	1.6	3.5	3.5	5.1	2
12 & 33	3.6-3.7	2.1-3.0	6.4	1.6	4.5	3.5	6.1	2
13 & 34	3.6-3.7	2.7-3.6	6.4	1.6	5	3.5	6.1	2
14 & 35	3.6-3.7	3.0-4.0	6.4	1.6	5.5	3.5	7.1	2
15 & 36	3.6-3.7	4.5-5.5	6.4	1.6	6	3.5	7.1	2
16 & 37	4.1-4.2	2.5-3.5	8	1.8	5	4	7	2
17 & 38	4.1-4.2	3.5-4.5	8	1.8	6	4	7	2
18 & 39	4.1-4.2	4.5-5.5	8	1.8	7	4	9	2
19 & 40	4.1-4.2	5.5-6.5	8	1.8	8	4	9	2
20	4.1-4.2	6.5-7.5	8	1.8	9	4	11	2
21 & 41	4.1-4.2	7.5-8.5	8	1.8	10	4	11	2

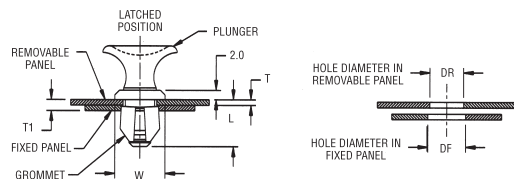
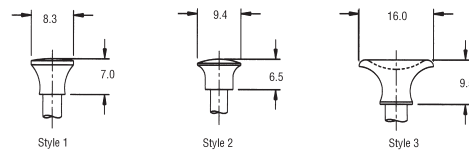
H257

Ref.	Order Code	Price Per Pack			
		1+	10+	15+	20+
Black					
1	722-4266				
2	722-4278				
3	722-4280				
4	722-4291				
5	722-4308				
6	722-4310				
7	722-4321				
8	722-4333				
9	722-4345				
10	722-4357				
11	722-4369				
12	722-4370				
13	722-4382				
14	722-4394				
15	722-4400				
16	722-4412				
17	722-4424				
18	722-4436				
19	722-4448				
20	722-4450				
21	722-4461				
White					
22	722-4473				
23	722-4485				
24	722-4497				
25	722-4503				
26	722-4515				
27	722-4527				
28	722-4539				
29	722-4540				
30	722-4552				
31	722-4564				
32	722-4576				
33	722-4588				
34	722-4590				
35	722-4606				
36	722-4618				
37	722-4620				
38	722-4631				
39	722-4643				
40	722-4655				
41	722-4667				

Snap Latch Rivet



PLUNGER HEAD STYLES



- Light, impact resistant and non-conductive
- Quick installation of panels
- Black nylon 6 plunger, polycarbonate grommet