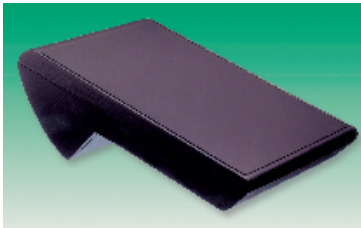


BOX366

External Dimensions					Price Each			
H1	H2	W	D	Colour	Order Code	1+	25+	50+
Without Battery Compartment								
28	48	91	146	Black	736-314			
28	53	102	191	PC Bone	736-340			
With Battery Compartment								
28	53	91	146	Black	736-351			
32	57	102	191	PC Bone	736-387			

Versatile Enclosure ABS



- Suitable for use as a hand-held, desktop, wall mounted or arm mounted instrument case

Material Dark grey ABS/PC **UL94V0**
Max temperature 100°C

	A (WIDTH)	B (LENGTH)	C (HEIGHT)
Nova 60	63	212.5	66
Nova 120	127	212.5	66

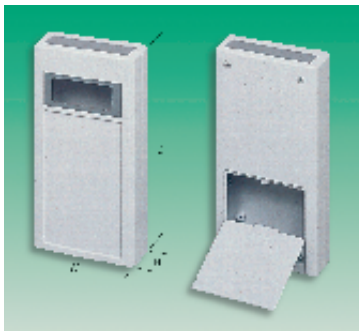
BERNIC



BOX372

Mftrs. List No.	Order Code	1+	25+	100+
Nova 60	318-2976			
Nova 120	318-2988			

Window — 'Veronex' PS (Flame Retardant)



- Two part snap together moulding in pale grey (RAL 7035) with dusty grey (RAL 7037) end panels
- LCD cut-out with transparent plastic protective window
- Recessed key pad area
- Circuit boards can be mounted either vertically or horizontally
- Integral battery compartment
- Battery holders and infra-red permeable panels available as options

Operating temperature -40°C to +80°C

Cases	External Dimensions			Pale Grey	
	H	W	D	Mftrs. List No.	Order Code
	30	80	150	75-227910G	465-951
	45	80	150	75-227911D	465-963

Infra-Red Permeable End-Panels (for remote control transmitters)

Material Darvic, Black 9067, 2mm thick
Light Transmission 850nm 90%, 800nm 60%
Mftrs. List No. 75-237743L = 466-128

Battery Retaining Box (Fit inside battery compartment of 80 150mm cases)

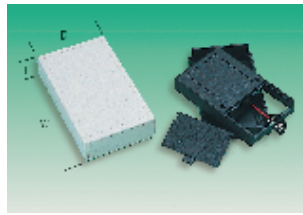
Shallow For 30mm or 45mm high cases. (Accepts 1 PP3 or 1 Double AAA holder)
Mftrs. List No. 75-226685G = 466-268

BOX86

H	W	D	Order Code	1+	20+	50+
Pale Grey Cases						
30	80	150	.465-951			
45	80	150	.465-963			
Infra-Red Permeable End Panels, for Cases						
30	80	150	466-128			
Battery Retaining Boxes						
Shallow			.466-268			

Handheld 'HM/JM Series' ABS – Sealed to IP54

PACINTEC GMBH



'HM' Series

- Moulded in ABS. Sealed to **IP54**
- Internally moulded vertical PCB guides
- Removable front ABS panel
- Available with 1 x PP3 battery compartment

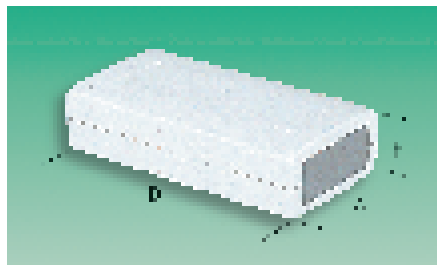
'JM' Series

- Compact cases moulded in ABS
- Available with or without panels

BOX361

External Dimensions					Price Each		
H	W	D	Colour	Order Code	1+	25+	50+
'HM' without battery compartment							
23	97	61	Black	736-211			
23	97	61	PC Bone	249-981			
33	97	61	Black	318-4808			
33	97	61	PC Bone	318-4810			
23	116	70	Black	736-223			
23	116	70	PC Bone	736-235			
36	116	70	Black	318-4821			
36	116	70	PC Bone	318-4833			
'HM' with battery compartment							
25	97	61	Black	736-247			
25	97	61	PC Bone	249-993			
33	97	61	Black	318-4845			
33	97	61	PC Bone	318-4857			
25	116	70	Black	736-259			
25	116	70	PC Bone	736-260			
38	116	70	Black	318-4869			
38	116	70	PC Bone	318-4870			
HM' Belt/Pocket Clip for 97mm width cases					148-581		
'JM' – Two removable panels							
25	61	58	Black	318-4882			
25	61	58	PC Bone	318-4894			
25	69	66	Black	318-4900			
25	69	66	PC Bone	318-4912			
25	76	69	Black	318-4924			
25	76	69	PC Bone	318-4936			
25	97	61	Black	318-4948			
25	97	61	PC Bone	318-4950			
'JM' without panels							
10	41	61	Black	318-4961			
10	41	61	PC Bone	318-4973			
20	41	61	Black	318-4985			
20	41	61	PC Bone	318-4997			
25	69	101	Black	318-5011			
25	69	101	PC Bone	318-5023			

'Veronex' IP54, PS (Flame Retardant-Grey Only)



- Two part screw together moulding in pale grey (RAL 7035) with dusty grey (RAL7037) end panels, or all in black horizontally
- Wall mountable via keyhole knockouts
- Recessed area for logos or labels

Operating Temperature -40°C to +80°C

BOX88

External Dimensions				Mftrs. List	Price Each		
H	W	D	No.	Order Code	1+	20+	50+
Pale Grey							
24	50	90	75-227895J	.465-896			
30	60	120	75-227897C	.465-902			
30	80	150	75-227900L	.465-926			
45	80	150	75-227901H	.465-938			
Black							
24	50	90	75-237425F	465-987			
30	80	150	75-237429E	466-013			
35	80	150	75-237430F	466-025			

continued