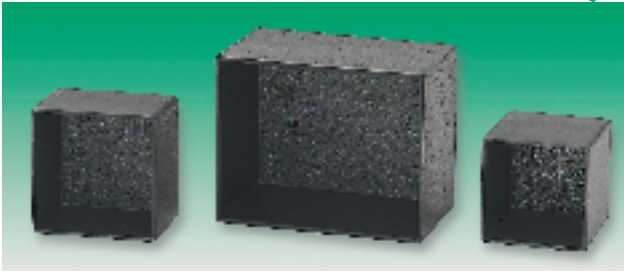


Potting ABS



- Complies to **DIN53495**
- Resistant to most chemicals
- Suitable for machining, punching and printing

Temp Range: -20°C to +94°C

Mftrs. List No.	Dimensions			Wall
	A	B	C	
BIM103PB	40	35	20	1
BIM104PB	50	40	30	1
BIM111PB	30	30	20	1
BIM112PB	25	25	25	1
BIM113PB	40	40	30	1



External Dimensions			Colour	Order Code	Price Each		
H	W	D			1+	10+	25+
Medium Body							
20	42	81	Black	318-3488			
20	42	81	PC bone	318-3490			
20	42	81	Black	318-3506			
20	42	81	PC bone	318-3518			
20	42	94	Black	318-3520			
20	42	94	PC bone	318-3531			
20	42	78	Black	318-3543			
20	42	78	PC bone	318-3555			
Large Body							
20	42	75	Black	318-3683			
20	42	75	PC bone	318-3695			
20	42	91	Black	318-3701			
20	42	91	PC bone	318-3713			
20	42	91	Black	318-3725			
20	42	91	PC bone	318-3737			
20	42	91	Black	318-3749			
20	42	91	PC bone	318-3750			
20	42	93	Black	318-3762			
20	42	93	PC bone	318-3774			
20	42	106	Black	318-3786			
20	42	106	PC bone	318-3798			

10 Per Pack

Mftrs. List No.	Order Code	1+	5+	10+	50+
BIM103PB	318-2824				
BIM104PB	318-2836				
BIM111PB	318-2848				
BIM112PB	318-2850				
BIM113PB	318-2861				

Project & General Purpose

Connector Housing – 'CN Series'



- Moulded in ABS
- Snap-fit assembly
- Ideal for small footprint applications
- Designed-in external gripping features
- Body that houses PCB available to suit different sizes
- Body length: Small 37.5, medium 50, large 63
- All necessary hardware supplied

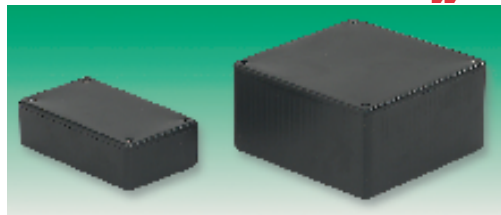


Mftrs. List No.	Order Code	Mftrs. List No.	Order Code
CNS-0000 BK	318-3427	CNM-0607 PCB	318-3555
CNS-0000 PCB	318-3439	CNL-0000 BK	318-3683
CNS-0006 BK	318-3440	CNL-0000 PCB	318-3695
CNS-0006 PCB	318-3452	CNL-0006 BK	318-3701
CNS-0007 BK	318-3464	CNL-0006 PCB	318-3713
CNS-0007 PCB	318-3476	CNL-0407 BK	318-3725
CNM-0103 BK	318-3488	CNL-0407 PCB	318-3737
CNM-0103 PCB	318-3490	CNL-0607 BK	318-3749
CNM-0303 BK	318-3506	CNL-0607 PCB	318-3750
CNM-0303 PCB	318-3518	CNL-0303 BK	318-3762
CNM-0606 BK	318-3520	CNL-0303 PCB	318-3774
CNM-0606 PCB	318-3531	CNL-0606 BK	318-3786
CNM-0607 BK	318-3543	CNL-0606 PCB	318-3798

External Dimensions			Colour	Order Code	Price Each		
H	W	D			1+	10+	25+
Small Body							
20	42	50	Black	318-3427			
20	42	50	PC bone	318-3439			
20	42	66	Black	318-3440			
20	42	66	PC bone	318-3452			
20	42	50	Black	318-3464			
20	42	50	PC bone	318-3476			

continued

Polystyrene '1591S Series' IP54

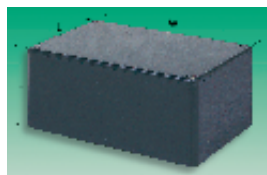


- Economical black plastic box ideally suited for mounting PC boards
- Includes vertical card guides
- Two piece lap joint construction provides protection against dust and splashing water (IP54)
- Lid is secured with self tapping screws
- No "gate" marks on bottom of enclosure



Mftrs. List No.	L	W	D	Order Code	1+	10+	100+	250+	500+
1591LSBK	85	56	39	353-6488					
1591ASBK	100	50	25	353-6490					
1591BSBK	112	62	31	353-6506					
1591CSBK	120	65	40	353-6518					
1591DSBK	150	80	50	353-6520					
1591ESBK	191	110	61	353-6531					
1591GSBK	121	94	34	353-6543					
1591HSBK	165	71	29	353-6555					
1591MSBK	85	56	25	353-6567					
1591SSBK	110	82	44	353-6579					
1591TSBK	120	80	59	353-6580					
1591USBK	120	120	59	353-6592					
1591VSBK	120	120	94	353-6609					

Miniature ABS (Impact Resistant)



- Can easily be drilled or punched
- Lid retained by four self-tapping screws



Mftrs. List No.	T2 = 645-655, T3 = 301-449,	T2W = 645-667, T3W = 301-450,	T2G = 645-679, T3G = 301-462
-----------------	-----------------------------	-------------------------------	------------------------------

External Dimensions			Order Code	Price Each					
H	W	D		1+	25+	50+	100+	500+	1000+
Black									
25	75	56	645-655						
27	75	51	301-449						
White									
25	75	56	645-667						
27	75	51	301-450						
Grey									
25	75	56	645-679						
27	75	51	301-462						

continued