

CTL287

Bodies	Mfrs.	Order Code	Price Each			
	List No.		1+	5+	10+	25+
Mounting Collar + 1 N/O Contact	ZB4BZ101	305-2977				
Mounting Collar + 1 N/C Contact	ZB4BZ102	305-2989				
Additional N/O Contact	ZBE101	305-2990				
Additional N/C Contact	ZBE102	305-3003				
<b>Selector Switch Heads</b>						
2 Position - Stay Put	ZB4BD2	305-4640				
3 Position - Stay Put	ZB4BD3	305-4652				
3 Position - Spring Return to Centre	ZB4BD5	305-4664				
<b>Key Switch Heads</b>						
<b>2 Position</b>						
Stay Put						
(key withdrawal LH)	ZB4BG2	305-4676				
Stay Put (key withdrawal LH + RH)	ZB4BG4	305-4688				
Spring Return to LH (key withdrawal LH)	ZB4BG6	305-4690				
<b>3 Position</b>						
Stay Put (key withdraw- al all positions)	ZB4BG0	305-4706				
Stay Put (key withdrawal centre)	ZB4BG3	305-4718				

## Pilot Lights, Illuminated Push Buttons and Selector Switches – XB4-B

Telemecanique



Body & Contact  
H = 46.5,  
W = 30, D = 43

- Unique protected LED technology
- 100,000 hour service life
- Reduced commissioning and maintenance costs
- High illumination level
- No access to live terminals from front
- No heavy transformers

Protected LED

Pilot Lights    Push Button (Flush)    Selector Switch  
D = 10.5        D = 13.5                    D = 25  
O/D = 28.5     O/D = 28.5                O/D = 28.5

CTL288

24V AC/DC Bodies (Incl. LED)	Mfrs.	Order Code	Price Each			
	List No.		1+	5+	10+	25+
White	ZB4BVB1	305-4720				
Green	ZB4BVB3	305-4731				
Red	ZB4BVB4	305-4743				
Yellow	ZB4BVB5	305-4755				
Blue	ZB4BVB6	305-4767				
<b>110/120V AC Bodies (Incl. LED)</b>						
White	ZB4BVG1	305-4779				
Green	ZB4BVG3	305-4780				
Red	ZB4BVG4	305-4792				
Yellow	ZB4BVG5	305-4809				
Blue	ZB4BVG6	305-4810				
<b>230/240V AC Bodies (Incl. LED)</b>						
White	ZB4BVM1	305-4822				
Green	ZB4BVM3	305-4834				
Red	ZB4BVM4	305-4846				
Yellow	ZB4BVM5	305-4858				
Blue	ZB4BVM6	305-4860				
<b>Contacts</b>						
N/O Contact	ZBE101	305-2990				
N/C Contact	ZBE102	305-3003				
<b>Pilot Light Heads</b>						
White	ZB4BV013	305-4871				
Green	ZB4BV033	305-4883				
Red	ZB4BV043	305-4895				
Yellow	ZB4BV053	305-4901				
Blue	ZB4BV063	305-4913				
<b>Push Button Heads (Flush)</b>						
White	ZB4BW313	305-4925				
Green	ZB4BW333	305-4937				
Red	ZB4BW343	305-4949				
Yellow	ZB4BW453	305-4950				
Blue	ZB4BW463	305-4962				
<b>Push Button Heads (Projecting)</b>						
White	ZB4BW113	305-4974				
Green	ZB4BW133	305-4986				
Red	ZB4BW143	305-4998				
Yellow	ZB4BW153	305-5000				
Blue	ZB4BW163	305-5012				
<b>2 Position Selector Switch</b>						
White	ZB4BK1213	305-5164				
Green	ZB4BK1233	305-5176				
Red	ZB4BK1243	305-5188				
Yellow	ZB4BK1253	305-5190				
Blue	ZB4BK1263	305-5206				

## 22mm Switches - Moeller

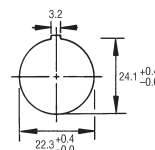
MOELLER

- 22mm fixing hole
- IP65 panel mounting protection
- Round on Round, or Round on Square styles
- Supplied with Matt chrome front ring
- Actuators will accept up to 3 contact blocks (single or double pole blocks)
- IP20 finger proof protection on lamp and contact blocks
- Actuators supplied with contact fixing adaptor as standard
- World market approved
- Easy and quick assembly features

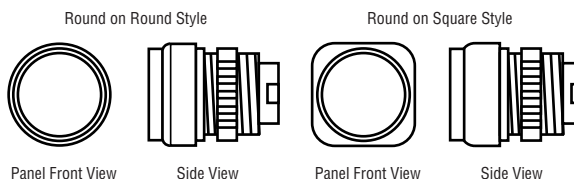
Operating temperature    -40°C to +60°C  
Panel thickness            6.0 max, 1.5 min

Contact blocks:  
Mechanical life            10<sup>7</sup> operations  
Rated insulation voltage    660Vac/800Vdc  
Rated thermal current        10A  
AC11 rated current            6A @ 220/240V  
    4A @ 380/415V

Panel Cut-out

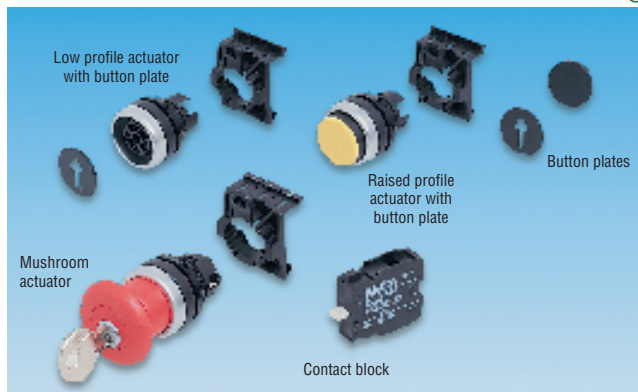


Note: Locating lug may be cut off actuator if preferred, and locating indent omitted.



## Push Buttons – IP65

MOELLER



Back of panel:  
H = 40, W = 30, D = 57 Including contact blocks

Front of panel:  
H = 12, Dia = 28.5 (low profile)  
H = 19, Dia = 28.5 (raised profile)  
H = 24, Dia = 35 (mushroom)

The push button actuators are supplied with clip-on contact block holder. Clip-in button plates for the low-profile and raised profile actuators are available separately, as are the front mounted contact blocks. A maximum of 3 contact blocks may be fitted per switch. Protection to IP65.

CTL039

Standard Actuators	Mfrs.	Order Code	Price Each		
	List No.		1+	10+	20+
<b>Low profile actuator:</b>					
Round on round	RD-X+BE3	176-210			
Round on square	MD-X+BE3	448-114			
<b>Raised profile actuator:</b>					
Round on round	RDH-SWX +BE3	176-211			
Round on square	MDH-SWX +BE3	448-126			
<b>Button plates:</b>					
Black	01T	176-212			
Green	03T	176-213			
Red	04T	176-214			
Yellow	05T	176-215			
Blue	06T	176-216			
Red 'O' (stop)	10T	176-217			
Green 'I' (start)	11T	176-218			
Arrow, White on Black	32T	176-219			
<b>Red Mushroom Actuators</b>					
Momentary 'O' (stop):					
Round on round	RP-RT10 +BE3	176-220			
<b>Key release: (with 2 keys)</b>					
Round on round	RPSR+BE3	176-222			
Round on square	MPSR+BE3	448-140			
<b>Contact Blocks</b>					
1 NO contact	EK10	176-223			
1 NC contact	EK01	176-224			
2 NO contacts	EC20	221-326			
2 NC contacts	EC02	221-338			

continued