

All terminals are supplied with panel insulating sets, with location key-way, double plain washers and solder tag for connection.

Contacts Brass nickel plated
Current rating 15A @ 250V ac
Housing Polypropylene

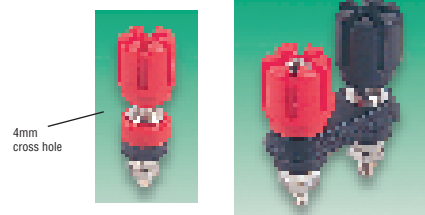
Mfrs. List No. TP/1+Colour

CS191

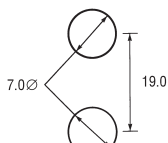
Colour	Order Code	Colour	Order Code	Colour	Order Code
Red	.143-550	Green	.143-552	Yellow	.143-554
Black	.143-551	Blue	.143-553	White	.143-555

Order Code	1+	50+	100+	250+	500+
.All colours					

4mm Insulated, 30A



CLIFF



H = 47 (open), 40 (closed), D = 15, Maximum panel thickness = 6

Panel cut-out
Mounting spacer

Designed for heavy duty applications the terminals feature extra large cross holes (4mm) for heavy conductors or even 4mm plugs. The castellated knob enables a handy coin to exert the required pressure for heavy current applications.

Current rating 30A @ 250V ac

Mfrs. List No. Terminal = TP/6S+Colour, Spacer = TPP/1

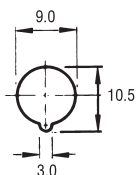
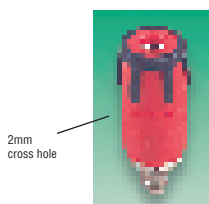
Warning : Not suitable for use as speaker output/input on audio equipment in accordance with the UK/EC safety standard **BS EN 60065**.

CS192

Colour	Order Code	1+	5+	50+	100+	250+	500+
Red	.148-250						
Black	.148-251						
Green	.148-252						
Brown	.148-253						
Blue	.148-254						
Yellow	.148-255						

Order Multiple=5	5+	50+	100+	250+	500+
Black Spacer	.148-256				

4mm Two Colour Insulated, 35A



Base dia = 12,
height closed = 34,
height open = 38

Available in three two-tone colours, Green/Yellow, Black/Red, Red/Black. There is a 2mm cross hole for clamp connection of a 2mm plug and 4mm hole in the end of the terminal to accommodate a standard 4mm plug. Maximum panel thickness 4mm.

Contact rating 35A
Operating voltage 30V ac/60V dc
Temperature range -40°C to +75°C
Housing Polyamide 66, **UL94-HB**
Contacts Brass, nickel plated
Termination Screw or solder

Mfrs. List No. PKUI35/+Colour GY, BR, RB

CS193

Colour	Order Code	1+	50+	100+	250+	500+
Body	Insert					
Green	Yellow	146-971				
Black	Red	146-972				
Red	Black	146-973				

Insulated, Quick Connect



- Panel mount quick connect terminal
- Used where temporary connection, or frequent connection/ disconnection, without conventional plugs is required
- Available with 6.3mm push-on terminal or threaded stud with solder tag

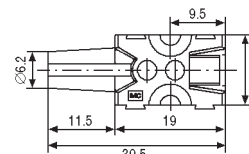
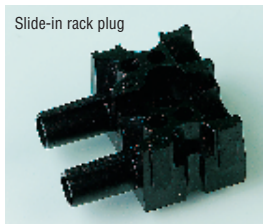
MC

CS341

Colour	Mfrs. List No.	Order Code	1+	10+	25+	50+	100+
6.3mm Push-on Tab							
Red	80132000	749-795					
Black	80131000	749-801					
Stud and Solder Tag							
Red	80142000	749-813					
Black	80141000	749-825					

Slide-in Rack Connections

MC



- Socket and plugs made for slide in rack systems
- 10 modules can be dovetailed together
- Plug and socket modules can be mixed
- Touch protected in unplugged position

Current rating 30A
Voltage rating 500V
Contact resistance 500µΩ
Housing Glass fibre reinforced polycarbonate
Contact plug Brass, silver plated

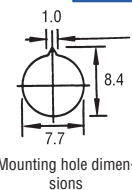
CS460

	Mfrs. List No.	Order Code	1+	10+	50+	100+	250+
Plug	P1/30-SSK	972-393					
Socket	P1/30-BS	972-400					

4mm 10A



CLIFF



Plug: Cover length = 34, Socket: L = 28, Dia = 12
Cover dia = 6.5, Overall length = 45 Maximum panel thickness = 13.5

A low cost range of 4mm plugs and sockets featuring slim style plugs and small diameter sockets enabling increased stacking density.

Mfrs. List No. Plugs P14+Colour, Sockets S14+Colour

CS176

Free Plugs		Colour	Order Code	Colour	Order Code
Red	143-556	Green	143-558	Yellow	143-560
Black	143-557	Blue	143-559	White	143-561

Order Multiple=5	Order Code	5+	50+	100+	250+	500+
All colours						

Panel Sockets		Colour	Order Code	Colour	Order Code	Colour	Order Code
Red	145-299	Green	145-301	Yellow	145-303	White	145-304
Black	145-300	Blue	145-302				

Order Multiple=5	Order Code	5+	50+	100+	250+	500+
All colours						

continued

Major International Brands

All the leading brand names from over 1,000 major international manufacturers.