

## Circular Multipole — Continued

### Panel Housing

Price Reduced



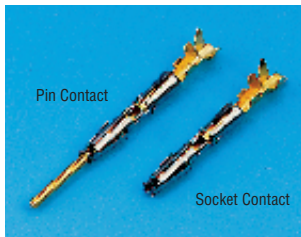
890-534 Pin housing    890-601 Dust Cap    890-571 Socket housing



CM406

No. of Shell Ways	Size	Mfrs. List No.	Order Code	1+	25+	50+	100+
<b>Pin Housing</b> - Accepts Pin Contacts							
6	10	UTGW010-6P-1	890-522				
10	12	UTGW012-10P-1	890-534				
19	14	UTGW014-19P-1	890-546				
26	16	UTGW016-26P-1	890-558				
<b>Socket Housing</b> - Accepts Socket Contacts							
6	10	UTGW010-6S-1	890-560				
10	12	UTGW012-10S-1	890-571				
19	14	UTGW014-19S-1	890-583				
26	16	UTGW016-26S-1	890-595				
<b>Plastic Dust Caps</b>							
10		UTP10DCG	890-601	1+	25+	100+	250+
12		UTP12DCG	890-613				
14		UTP14DCG	890-625				
16		UTP16DCG	890-637				
18		UTP18DCG	892-257				
20		UTP20DCG	892-269				
22		UTP22DCG	892-270				
24		UTP24DCG	892-282				

### 'Sealok' Crimp Contacts



- Two part contact
- Body, gold or tin plated high quality copper alloy, stainless steel outer spring



Price Reduced

Current rating	7.5A	Contacts	Copper alloy, tin alloy plated 0.50µ
Contact resistance	9.5 mΩ		Copper alloy, gold flash 0.76µ over nickel 2.0µ
Mfrs. List No.	SM20WL3TK6UK = 890-649 SC20WL3TK6UK = 890-662 SM20WL3S26UK = 890-686 SC20WL3S25UK = 892-233		SM24WL3TK6UK = 890-650 SC24WL3TK6UK = 890-674 SM24WL3S26UK = 892-221 SC24WL3S25UK = 892-245

CM393

Order Multiple=30	Order Code	30+	120+	240+	1200+
<b>Wire Size</b>					
<b>Tin Plated Pins</b>					
22-20 AWG, 0.35-0.50mm <sup>2</sup>	890-649				
26-24 AWG, 0.13-0.25mm <sup>2</sup>	890-650				
<b>Tin Plated Sockets</b>					
22-20 AWG, 0.35-0.50mm <sup>2</sup>	890-662				
26-24 AWG, 0.13-0.25mm <sup>2</sup>	890-674				
<b>Gold Plated Pins</b>					
22-20 AWG, 0.35-0.50mm <sup>2</sup>	890-686				
26-24 AWG, 0.13-0.25mm <sup>2</sup>	892-221				
<b>Gold Plated Sockets</b>					
22-20 AWG, 0.35-0.50mm <sup>2</sup>	892-233				
26-24 AWG, 0.13-0.25mm <sup>2</sup>	892-245				

### Tooling

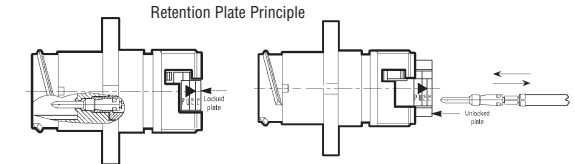
- A quality ratchet crimp tool
- Integral multi-position die sets, ensures no change in tooling
- Extraction tool available



CM394

	Mfrs. List No.	Order Code	Price Each
Crimp Tool	Y14MTV	892-294	1+
Extraction Tool	RX20D44	892-300	

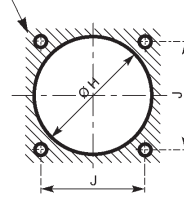
## Sealed Connectors 'Clipper'



Locked, the retention plate holds the contacts firmly in position.

Unlocked the retention plate allows the insertion/extraction of contacts without tool.

4 holes ∅ G



Panel cut-out

Shell sizes Dim. (mm)	1	2	3	4
H	21.5	25	31	41
J	21.4	24.6	28.6	36.5
G	3.2	3.2	3.8	3.8

- Clipper has a monobloc shell and insulator in thermoplastic material self-extinguishing to **UL94V0**.
- Retention plate system allows insertion/extraction of the contacts without the need for tooling.
- Sealed to **IP67/IP68**, new version (with sealing gland backshell).
- 180° screw coupling with positive audible safety catch.
- Supplied complete with 0 rings and contacts.
- Each connector is supplied with one spare contact.
- Receptacles are also supplied with panel gaskets.
- Cable sockets mate with chassis plugs and in-line plugs
- Cable plugs only mate with chassis sockets

Contact rating	5A(∅1.0), 10A(∅1.6)	Housing	Thermoplastic to <b>UL94V0</b>
Contacts	Copper alloy, gold flash	Wire size	0.7 to 1.5mm <sup>2</sup>
Contact resistance	<10mΩ	Strip length	4mm
Insulation resistance	≥5000mΩ	Cable diameter	2.00 to 3.00mm
Breakdown voltage	1500V RMS		
Temperature range	-40°C to 125°C		

Note ◆ = ∅ 1.0 contacts

FOR SUITABLE CONTACTS, SEE PAGE 295

CM318

No. of Ways	Shell Size	Mfrs. List No.	Order Code	1+	25+	100+	250+	500+
<b>Sealed Square Flange Receptacle - With Pin Contacts</b>								
4	1	CL1M1101UK	535-606					
◆ 9	1	CL1M1201UK	749-096					
9	2	CL1M2101UK	535-618					
◆ 14	2	CL1M2201UK	749-102					
18	3	CL1M3101UK	535-620					
26	4	CL1M4101UK	535-631					
◆ 31	3	CL1M3201UK	749-114					
40	4	CL1M4201UK	749-126					
<b>Sealed Square Flange Receptacle - With Socket Contacts</b>								
4	1	CL1R1101UK	749-138					
9	2	CL1R2101UK	749-140					
18	3	CL1R3101UK	749-151					
40	4	CL1R4201UK	749-163					
<b>Sealed In-Line Receptacle - With Pin Contacts</b>								
4	1	CL1C1101UK	749-175					
◆ 9	1	CL1C1201UK	749-187					
9	2	CL1C2101UK	749-199					
◆ 14	2	CL1C2201UK	749-205					
18	3	CL1C3101UK	749-217					
◆ 31	3	CL1C3201UK	749-229					
26	4	CL1C4101UK	749-230					
40	4	CL1C4201UK	749-242					

continued