

Rechargeable Lead Acid Batteries — continued

Sealed Gel Lead Acid L400 Longlife



- 10 year lifespan
- Valve regulated lead acid technology
- Direct output terminals with threaded inserts
- Anti-leak system to ensure operational safety when used in the horizontal or vertical position
- Flat anti-corrosion plates and anti-bypass separator to prevent short circuit
- Fire resistance lid and cover in accordance with **UL94-VO**
- Complete with all connections nuts and accessories



Reliable, high performing designed for sensitive stand by applications requiring an excellent relationship between lifespan and cost.

Operating temperature -15°C to +35°C Charge Voltage 13.68V @ 20°C

Capacity 10h @ 1.8V/cell	Dimensions			Weight (kg) Approx.	Output Type	Mfrs. List No.	Order Code
	H	W	D				
31.5	175.0	168.0	198.0	13.5	M6	L412/32	174-841
42.0	190.0	169.0	234.0	18.5	M8	L412/42	174-853
55.0	189.5	166.0	271.5	22.0	M8	L412/55	174-865

BAT133

Mfrs. List No.	Order Code	Price Each			
		1+	10+	25+	50+
L412/32	174-841				
L412/42	174-853				
L412/55	174-865				

'CYCLON' Sealed Lead Acid Cells



A range of 2V, fully sealed, maintenance-free lead acid cells, combining high output with exceptionally long service life. In cyclic applications the cells can be charged/ discharged up to 2000 times depending on depth of discharge, alternatively 8 to 10 years life can be expected in float applications at 25°C.



Recommended cyclic charge voltage 2.4V to 2.6V
Float charge voltage 2.3V to 2.4V
Operating temperature -40°C to +65°C

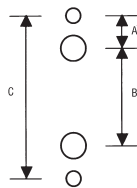
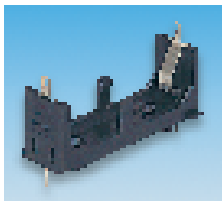
Capacity Ah	Max. Discharge Current (A)	Terminals	Dimensions		Weight (kg) Approx.	Mfrs. List No.	Order Code
			L	Dia.			
2.5	400	4.75 0.635 tags	67.3	35.5	181	9810-0004	147-180
4.5	400	4.75 0.64 tags	103.0	34.0	270	9860-0004	174-828
5	570	6.35 0.61 tags	80.3	46.0	369	9800-0004	147-181
8	665	6.35 0.64 tags	109.0	44.0	550	9850-0004	174-830
25	1335	M8 stud (+) M6 stud (-)	172.3	67.4	1670	9820-0004	147-183

BAT34X

Capacity Ah	Order Code	Price Each				
		1+	10+	25+	100+	250+
2.5	.147-180					
4.5	.174-828					
5	.147-181					
8	.174-830					
25	.147-183					

Battery Holders

½AA, AAA, AA, C, D
PCB Chassis Mounting



PCB Drilling pattern (see below for dimensions)

- A range of open frame battery holders
- Suitable for PCB or chassis mounting (½AA PCB only)
- Chassis mounting solder tags accept snap-on terminals (2.8 0.5) see **Book 3 Section 4**
- Interlocking lugs allow multiple assemblies of the same holder (except ½AA)
- Manufactured in black filled nylon
- Contacts Nickel silver

Contact rating Solder tag 20A, PCB pins 5A (2A ½AA)

Can Style	Body (excl. pins)			Dimensions			Mfrs. List No.	Order Code
	H	W	D	Drilling Pattern				
	A	B	C	A	B	C		
½AA	15.2	16.5	34.5	10.7	15.5	29.5	BX0031	174-725
AAA	17.1	13.5	52.4	10.5	27.9	48.9	BX0034	301-061
AA	25.0	17.5	60.3	11.9	33.0	56.8	BX0035	301-073
C	26.7	30.2	59.1	11.9	31.8	55.6	BX0036	301-085
D	28.2	38.1	71.0	16.0	35.6	67.5	BX0037	301-097

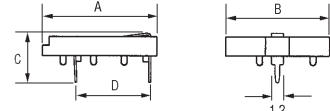
BAT37

Can Style	Order Code	Price Each					
		1+	25+	50+	100+	250+	500+
½AA	174-725						
AAA	.301-061						
AA	.301-073						
C	.301-085						
D	.301-097						

Coin Cells



- A range of PCB mountable coin cell holders
- PCB connections via solder pins
- Contacts are spring steel nickel plate and copper
- Suitable for single cells only



Maximum Cell Dia.	No. of Cells	A	B	C	D
12mm	1	11.43	15.06	7.92	9.98
12mm	2	11.43	15.06	9.65	9.98
16mm	1	22.79	19.05	7.93	11.76
20mm	1	28.35	22.76	8.50	20.50
20mm	2	30.96	27.76	11.48	20.50
24mm	1	30.96	22.76	8.50	20.50
24mm	2	30.96	27.76	11.48	20.50

BAT76X

Cell Dia	Order Code	Price Each			
		1+	25+	50+	100+
12mm	302-9839				
12mm	908-630				
16mm	676-482				
20mm	302-9827				
20mm	676-469				
24mm	676-470				
24mm	302-9815				

Coin Cell Retainer Clips

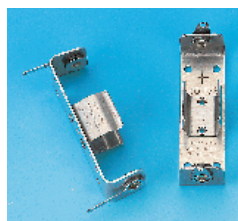


- Low profile, through hole mounting
- Retains cell securely, withstands shock and vibration
- Clearly marked polarity (+)
- Compatible with vacuum and mechanical Pick & Place assembly systems

BAT125

5 Per Pack Cell Dia.	Order Code	Price Per Pack		
		1+	5+	20+
12mm	908-642			
20mm	908-654			
23mm	908-666			
24mm	908-678			

**Aluminium Holders
PCB and Chassis Mounting**



- Sturdily construction
- Low cost and lightweight
- Brass eyelets and lugs, nickel plated
- Moisture proof insulation washer
- Single and multicell configuration
- Both solder lugs and direct pcb mounting types available

BAT144

5 Per Pack	Order Code	Price Per Pack		
		1+	5+	20+
AA (PCB)	206-696			
2 AA (PCB)	206-738			
AA (Solder)	206-751			
2 AA (Solder)	206-763			
C (Solder)	206-775			
2 C (Solder)	206-805			
D (Solder)	206-817			
2 D (Solder)	206-921			